

HEMLOCK

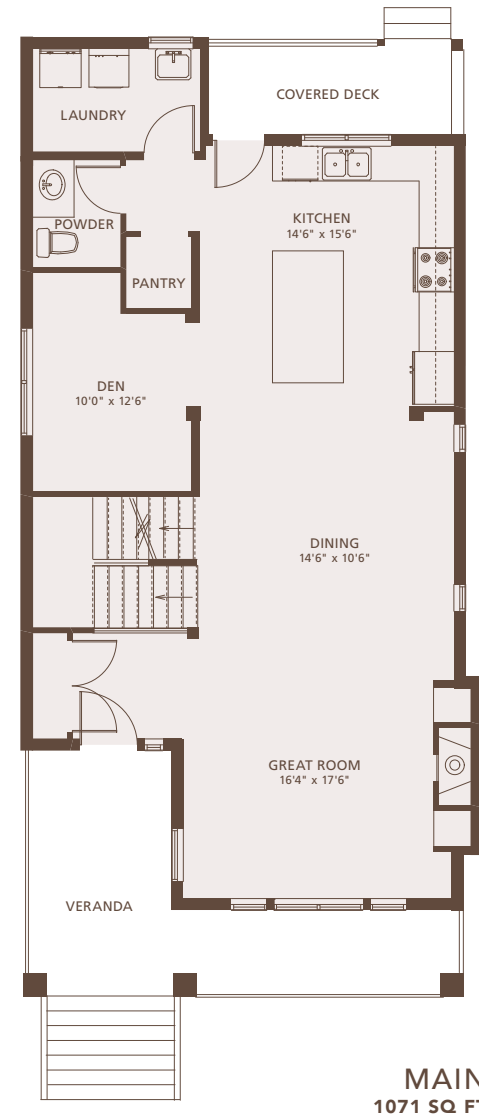
3186 SQ FT 4 BEDROOM 2.5 BATHROOMS



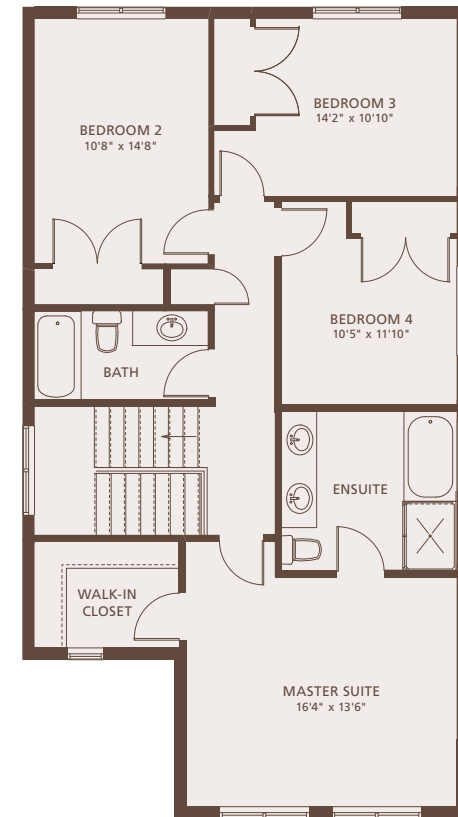
ELEVATION A



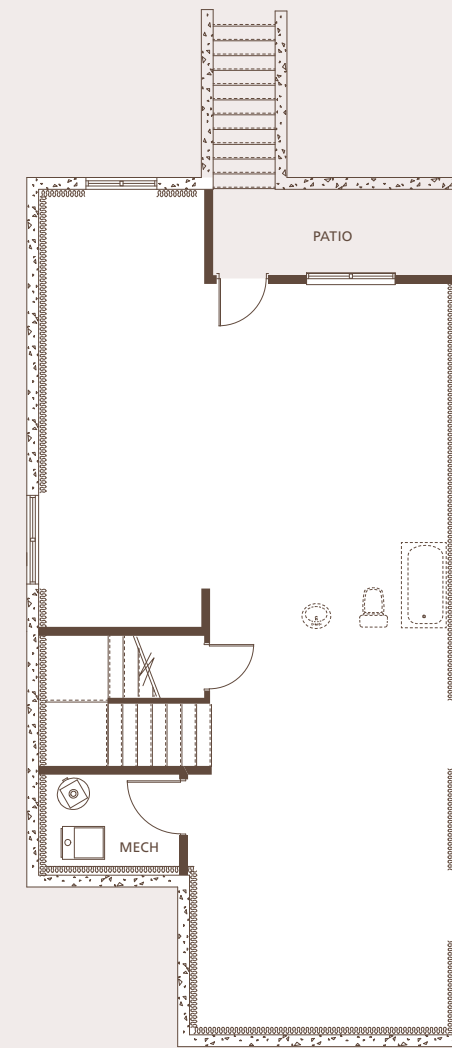
ELEVATION B



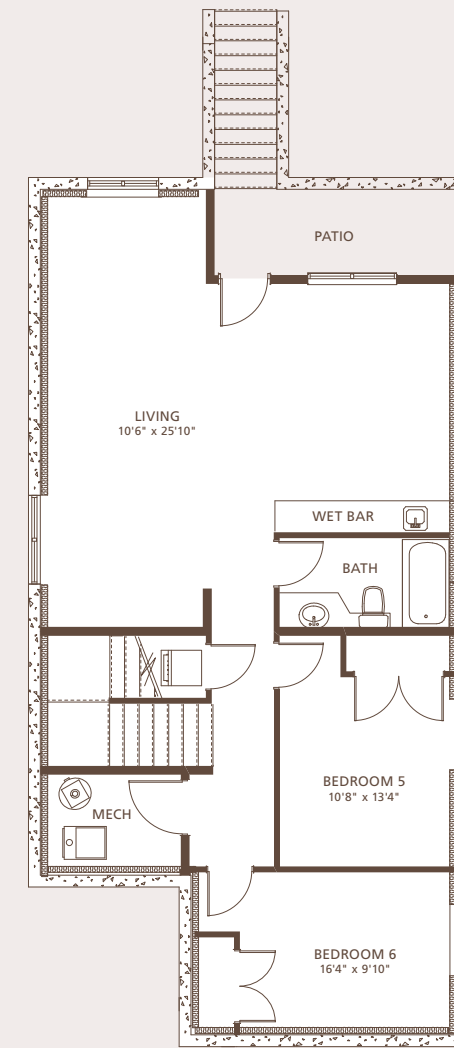
MAIN
1071 SQ FT



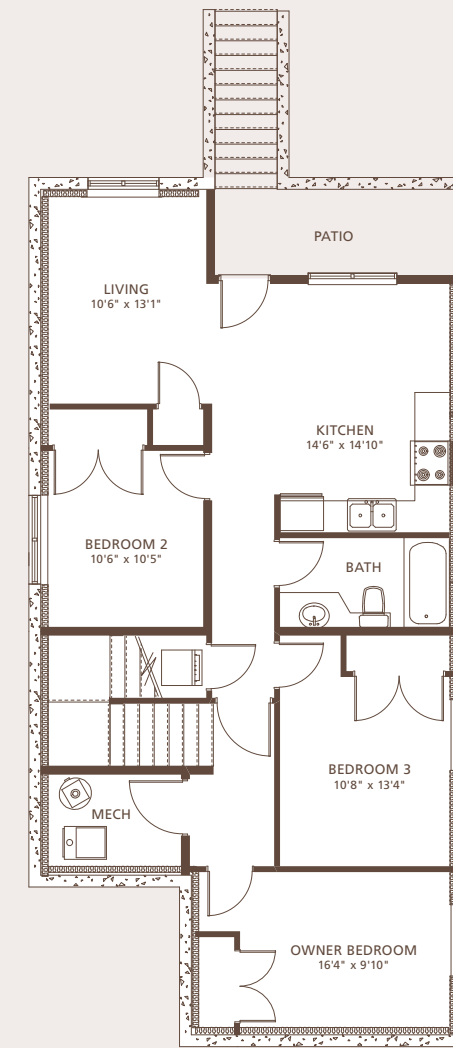
UPPER
1053 SQ FT



UNFINISHED BASEMENT
1061 SQ FT



DELUXE BASEMENT
1061 SQ FT



LEGAL SUITE BASEMENT
1061 SQ FT

Bold Properties reserves the right to make modifications and changes to the building design, elevations, dimensions, specifications, features and prices, without prior notification. Decks, Patios, Stairs and Windows may vary based on site conditions. These variances may include materials, sizes, and/or locations as well as the number of steps into and out of the home. Renderings are artist's conception and intended as a general reference only. See the Sales Representative for details. E. & O.E.

SITKA

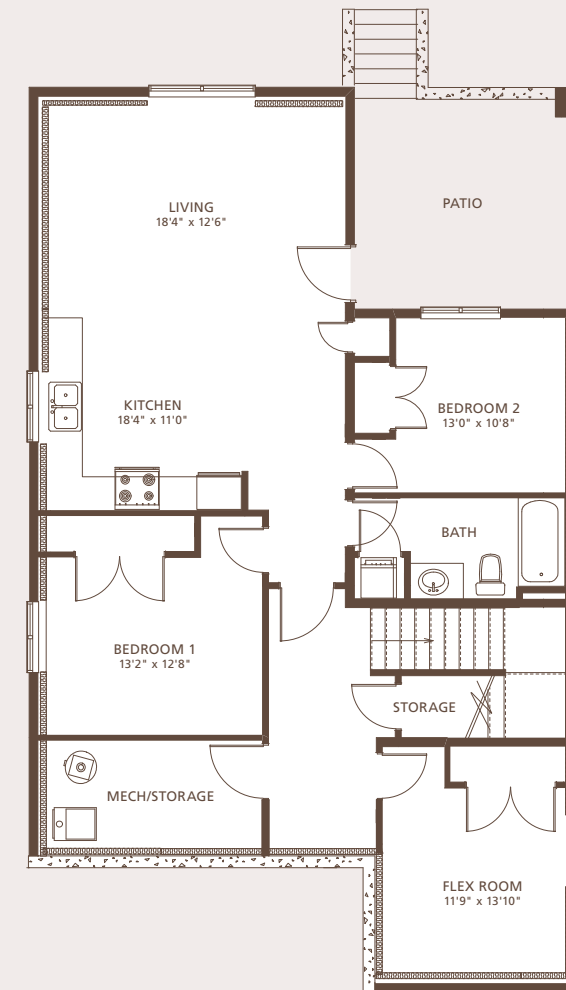
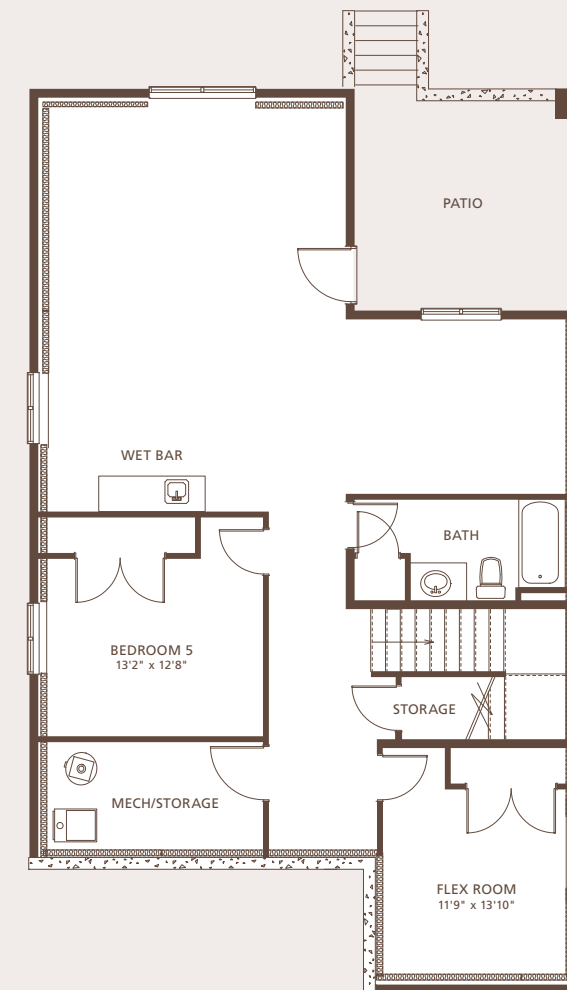
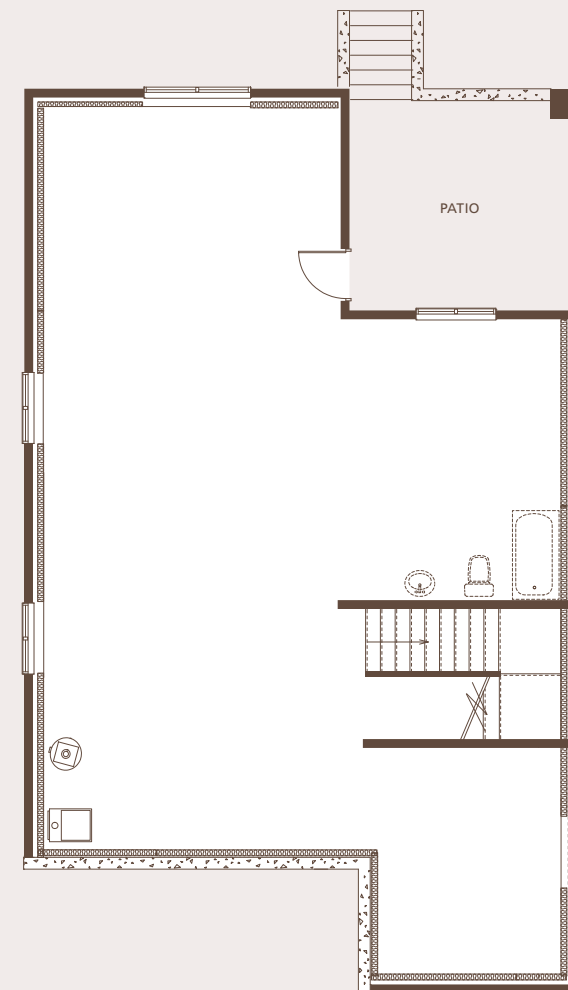
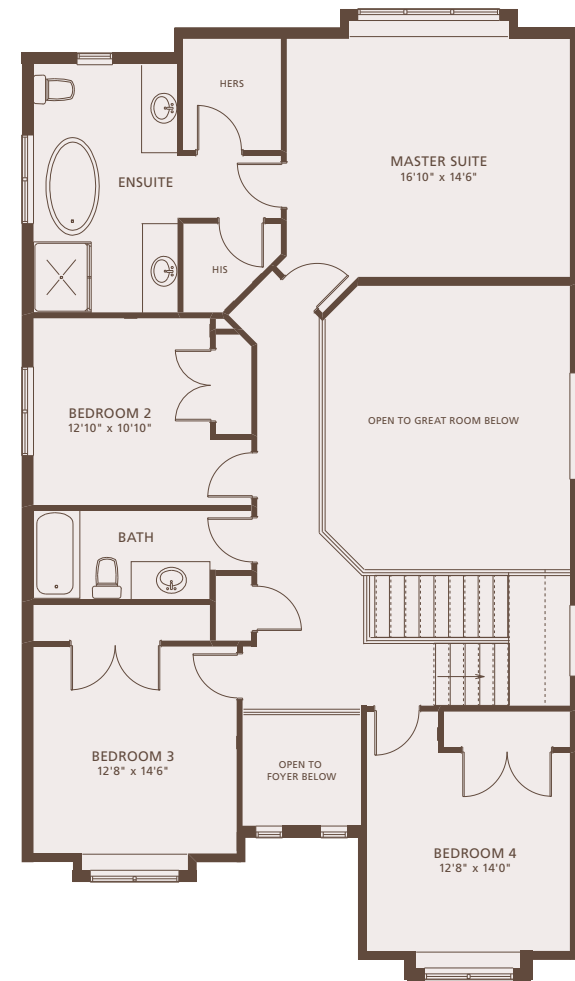
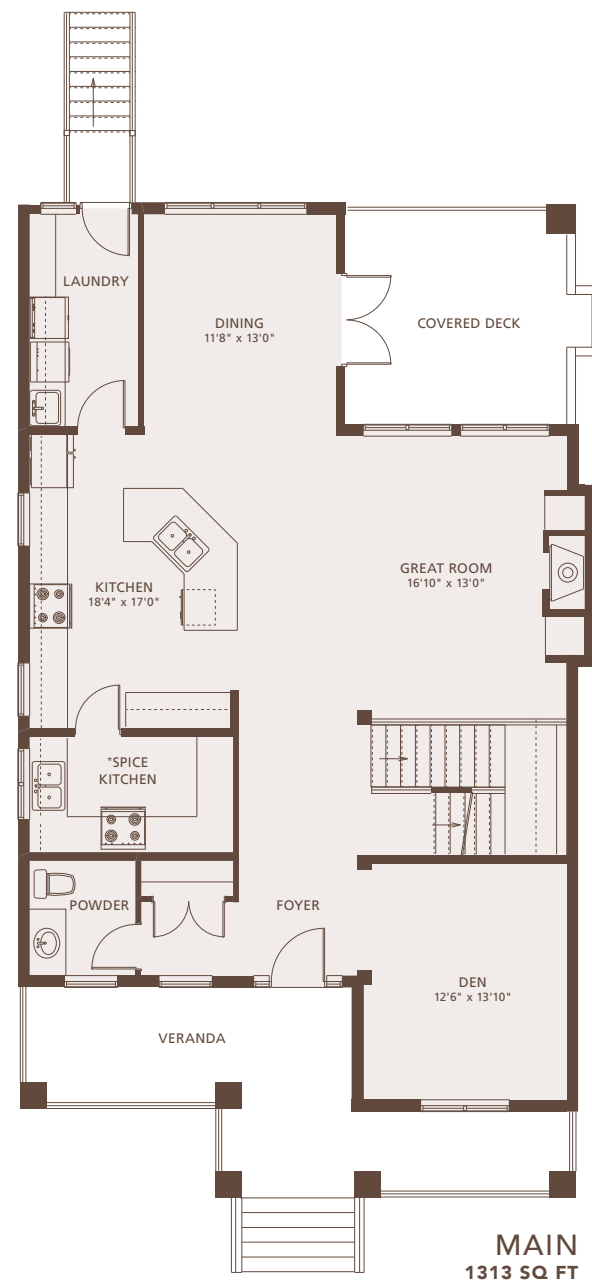
3866 SQ FT 4 BEDROOM 2.5 BATHROOMS



ELEVATION A



ELEVATION B



Bold Properties reserves the right to make modifications and changes to the building design, elevations, dimensions, specifications, features and prices, without prior notification. Decks, Patios, Stairs and Windows may vary based on site conditions. These variances may include materials, sizes, and/or locations as well as the number of steps into and out of the home. Renderings are artist's conception and intended as a general reference only. See the Sales Representative for details. E. & O.E.

*The Spice Kitchen is an optional upgrade from the standard pantry.

JUNIPER

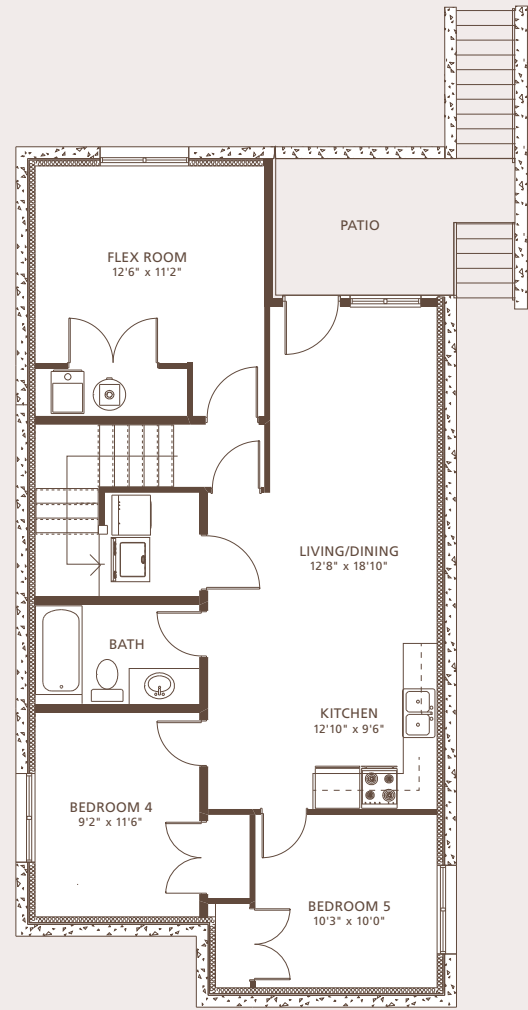
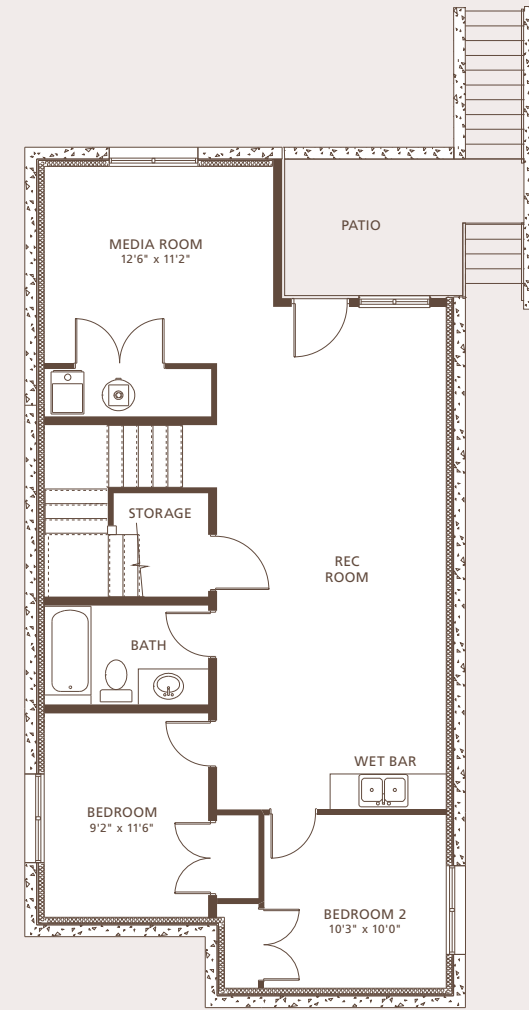
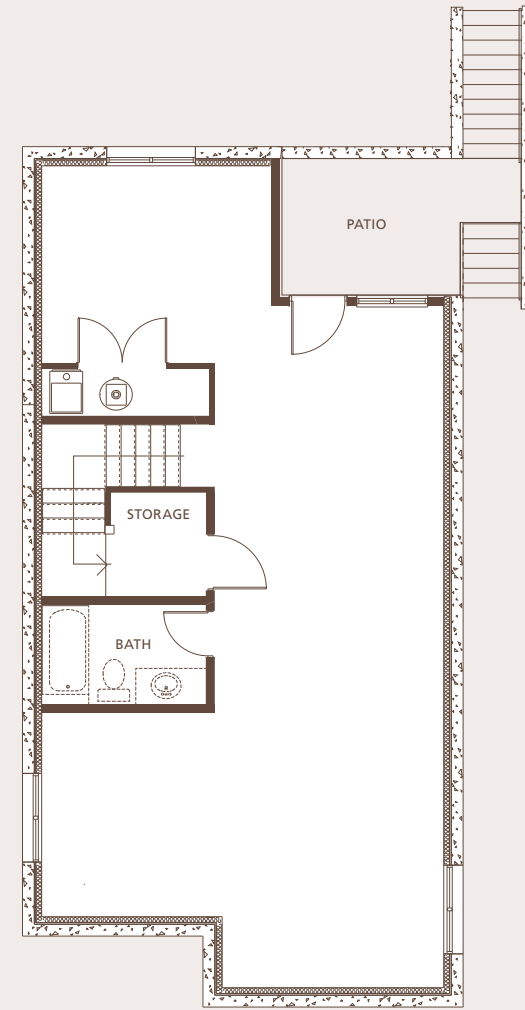
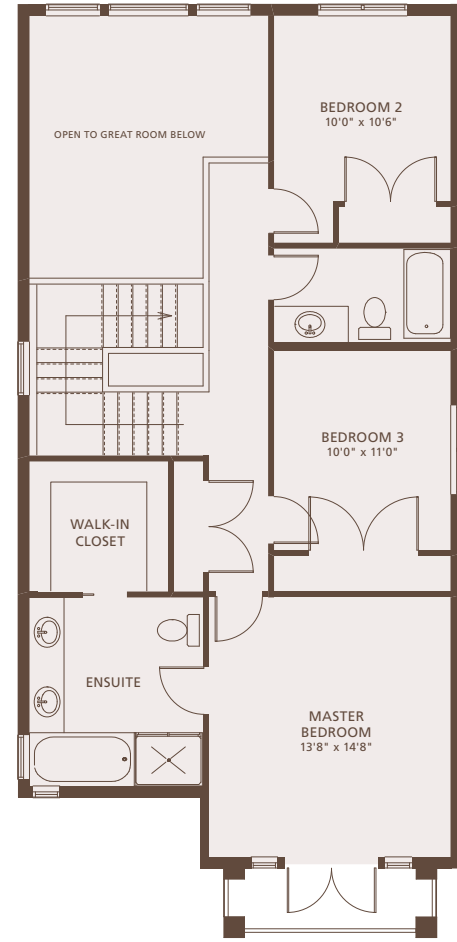
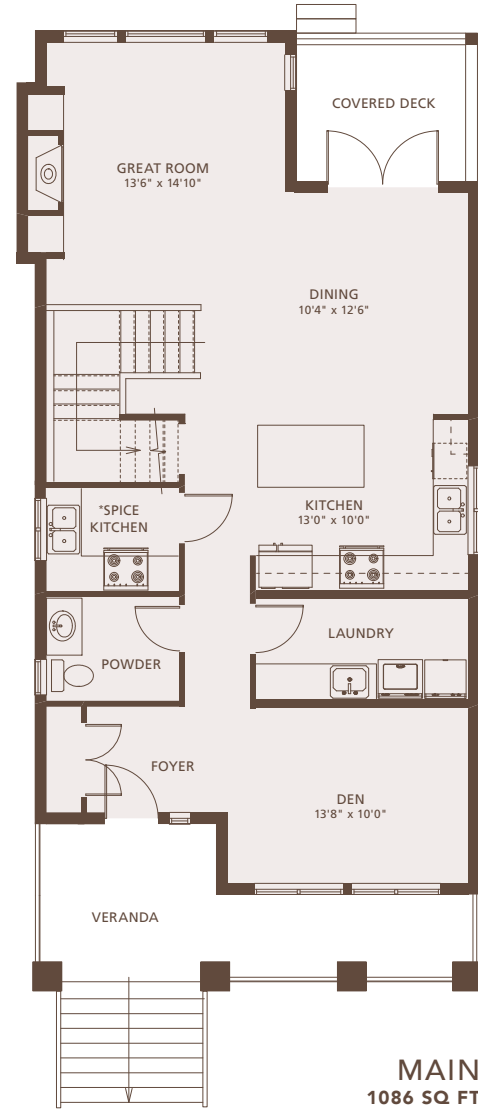
3136 SQ FT 3 BEDROOM 2.5 BATHROOMS



ELEVATION A



ELEVATION B



Bold Properties reserves the right to make modifications and changes to the building design, elevations, dimensions, specifications, features and prices, without prior notification. Decks, Patios, Stairs and Windows may vary based on site conditions. These variances may include materials, sizes, and/or locations as well as the number of steps into and out of the home. Renderings are artist's conception and intended as a general reference only. See the Sales Representative for details. E. & O.E.

*The Spice Kitchen is an optional upgrade from the standard pantry.

ARBUTUS

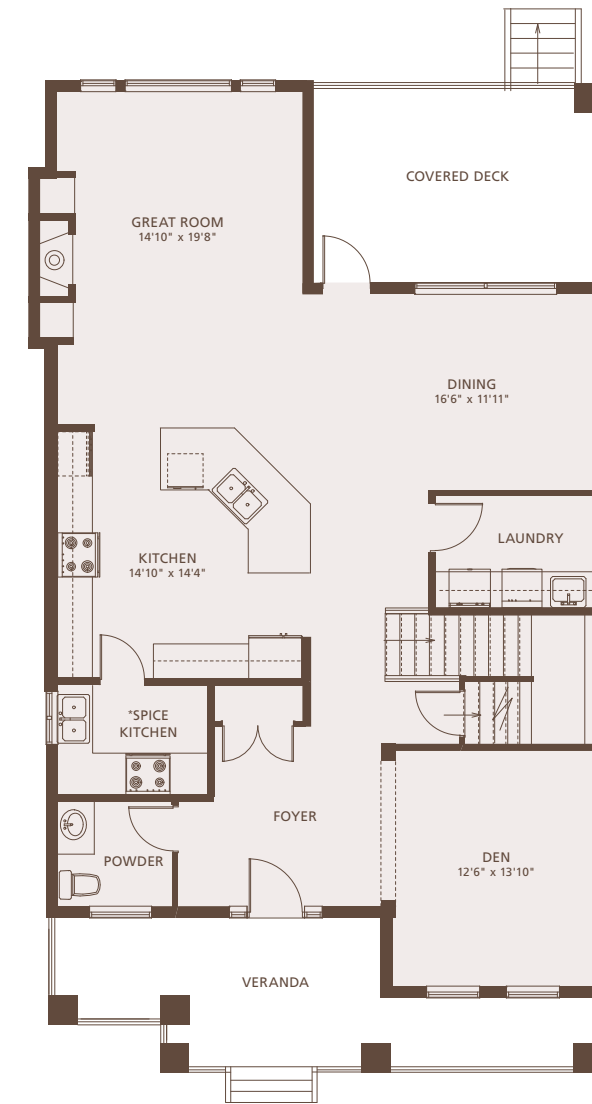
3929 SQ FT 4 BEDROOM 2.5 BATHROOMS



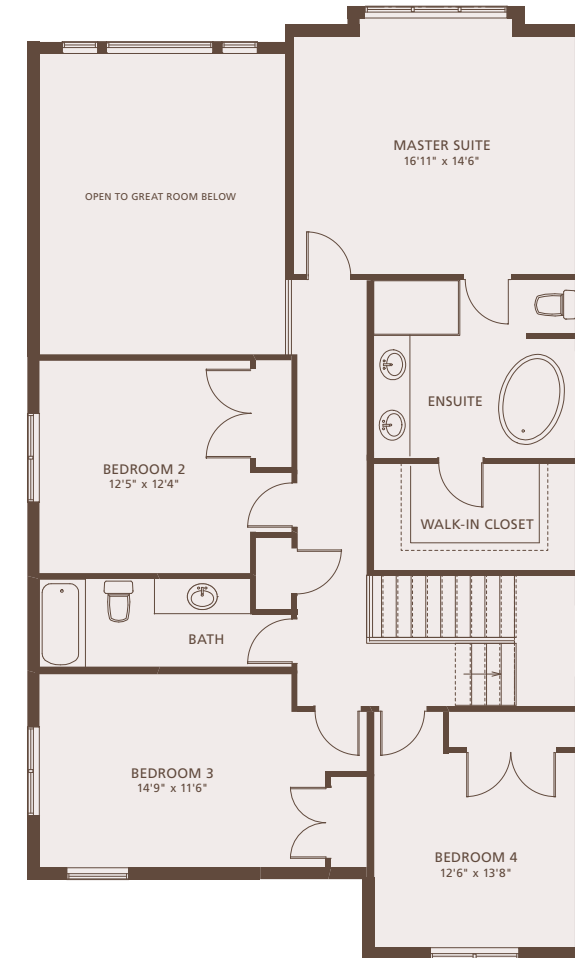
ELEVATION A



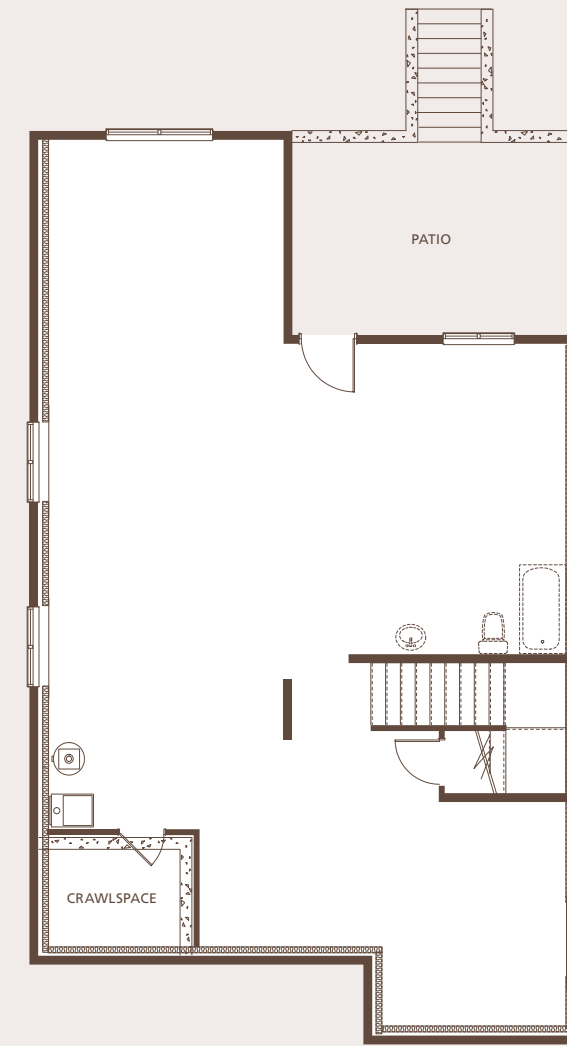
ELEVATION B



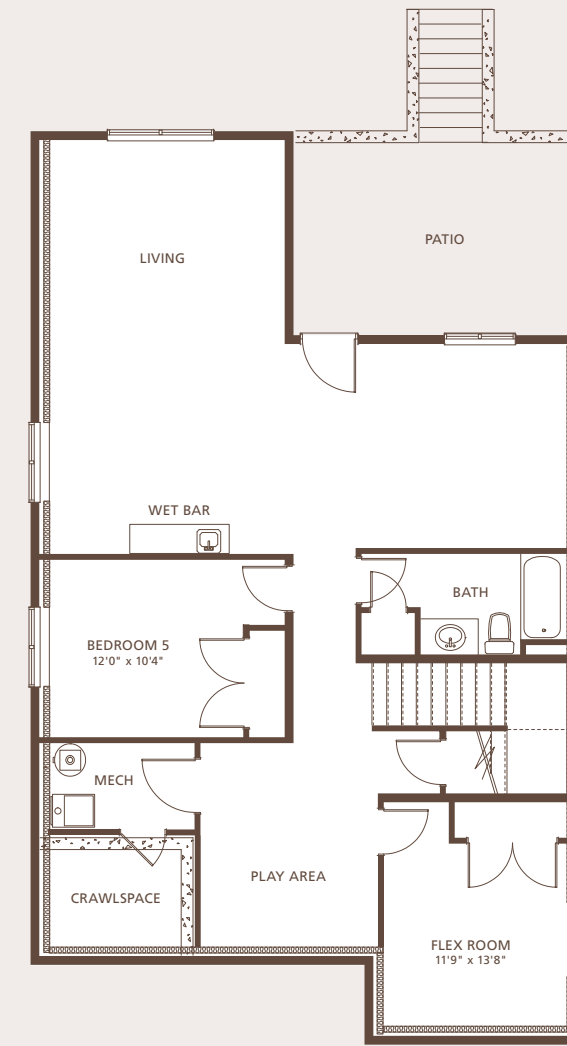
MAIN
1351 SQ FT



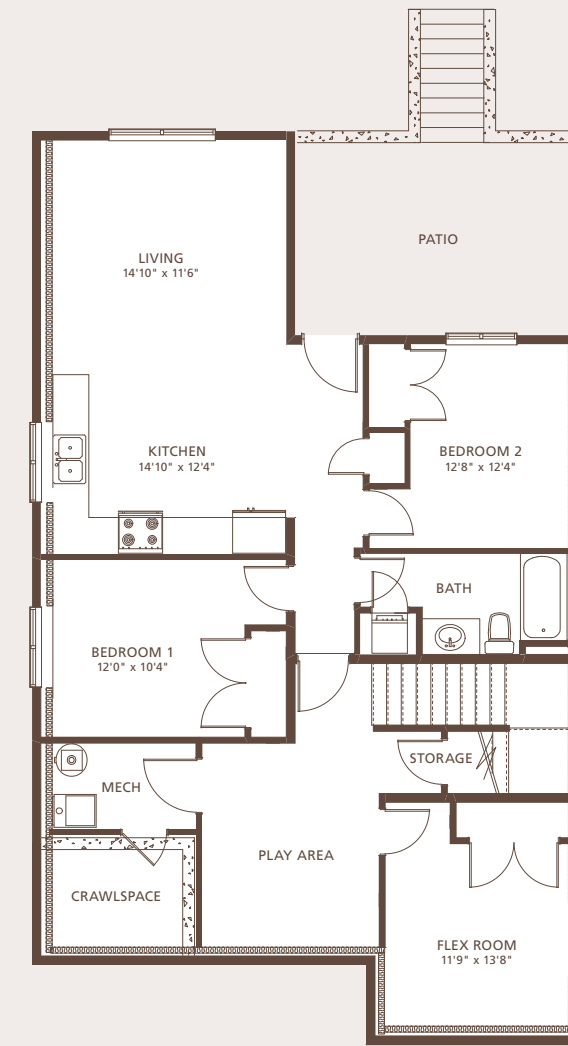
UPPER
1293 SQ FT



UNFINISHED BASEMENT
1285 SQ FT



DELUXE BASEMENT
1285 SQ FT



LEGAL SUITE BASEMENT
1285 SQ FT

Bold Properties reserves the right to make modifications and changes to the building design, elevations, dimensions, specifications, features and prices, without prior notification. Decks, Patios, Stairs and Windows may vary based on site conditions. These variances may include materials, sizes, and/or locations as well as the number of steps into and out of the home. Renderings are artist's conception and intended as a general reference only. See the Sales Representative for details. E. & O.E.

*The Spice Kitchen is an optional upgrade from the standard pantry.