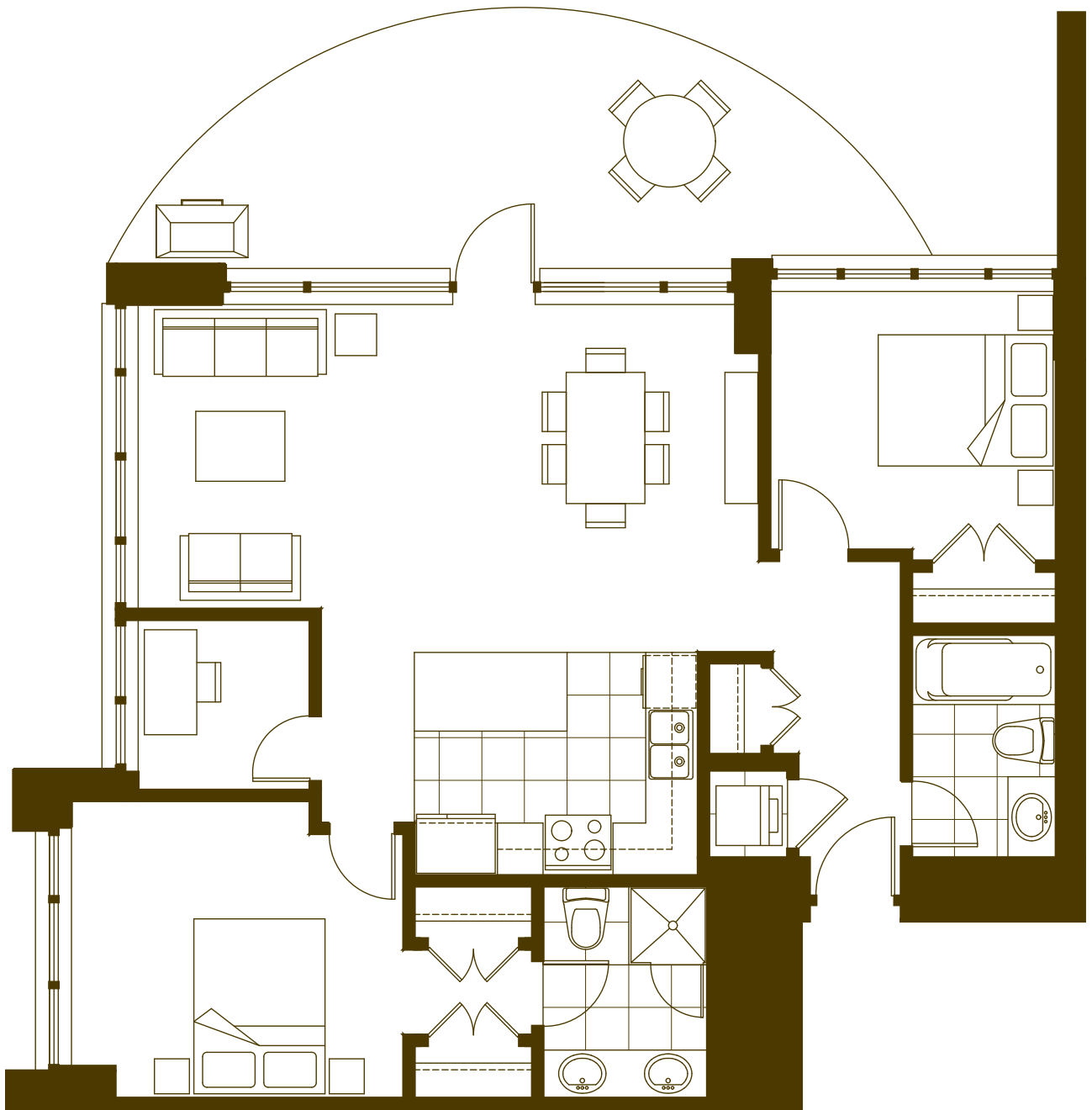


Plan

# 101



JEWEL  
II

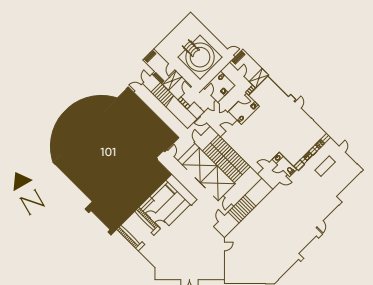


## 2 BEDROOM & DEN

Interior living 1,122 sqft

Terrace 215 sqft

Total 1,337 sqft



Floor 1

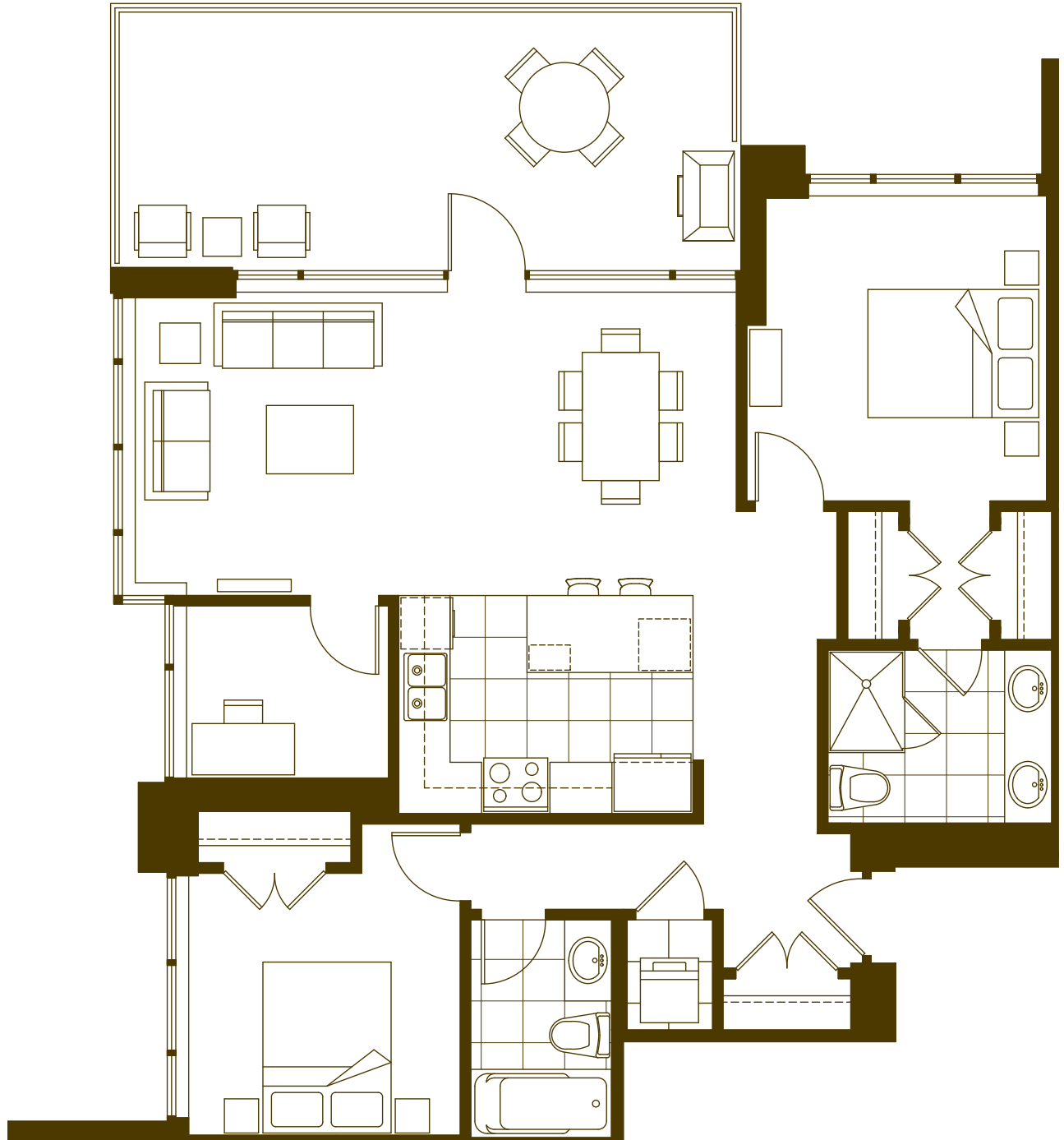
The Developer reserves the right to make modifications and changes to building design, specifications, features, ceiling heights and floor plans without notification. Room sets are for illustration purposes only. These matters will be governed entirely by the terms of the purchase contract and by the information provided for in the disclosure statement. E.&O.E.

Plan

01



JEWEL  
II

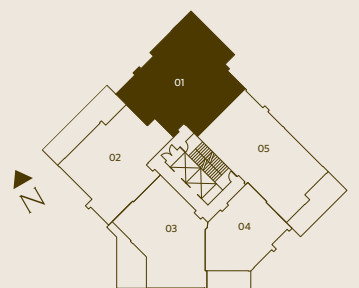


**2 BEDROOM & DEN**

Interior living 1,150 sqft

Terrace 246 sqft

Total 1,396 sqft



Floors 2 - 18

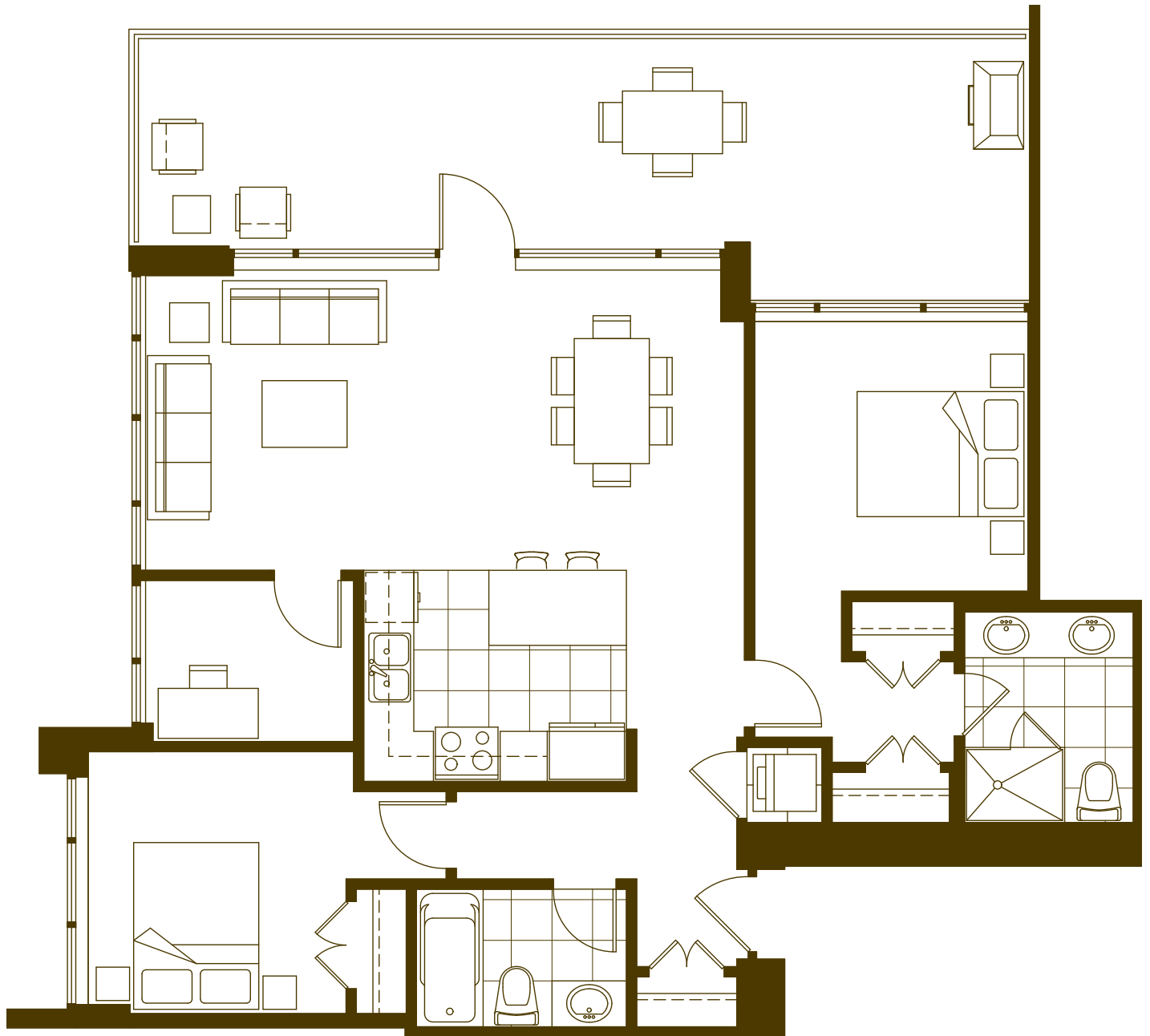
The Developer reserves the right to make modifications and changes to building design, specifications, features, ceiling heights and floor plans without notification. Room sets are for illustration purposes only. These matters will be governed entirely by the terms of the purchase contract and by the information provided for in the disclosure statement. E.&O.E.

Plan

02



JEWEL  
II

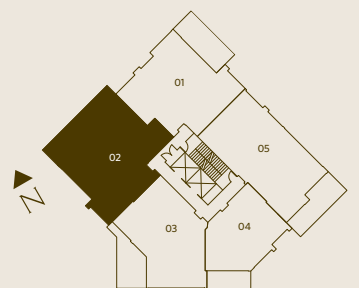


**2 BEDROOM & DEN**

Interior living 1,113 sqft

Terrace 328 sqft

Total 1,441 sqft



Floors 2 - 18

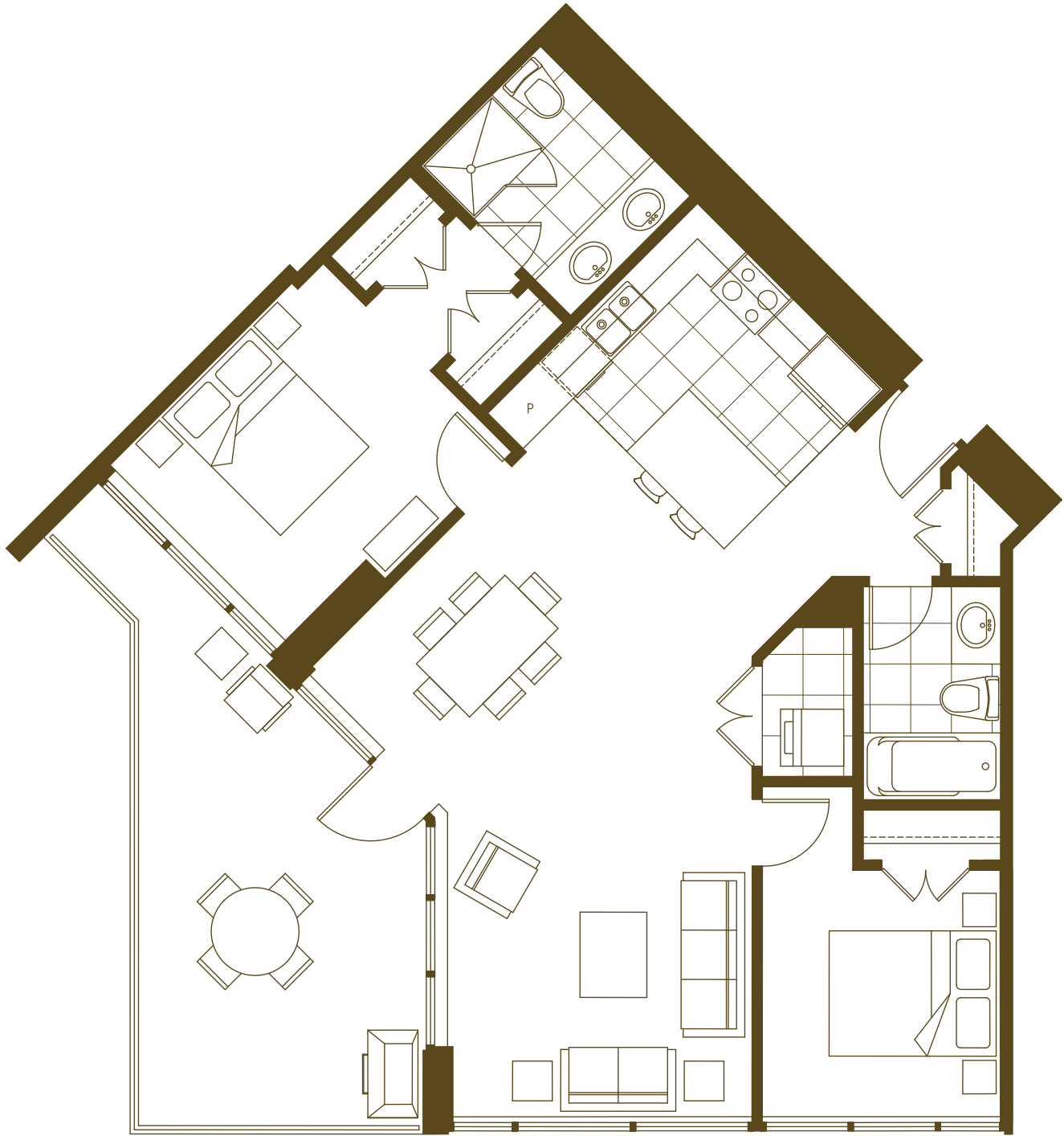
The Developer reserves the right to make modifications and changes to building design, specifications, features, ceiling heights and floor plans without notification. Room sets are for illustration purposes only. These matters will be governed entirely by the terms of the purchase contract and by the information provided for in the disclosure statement. E.&O.E.

Plan

# 03



JEWEL  
II

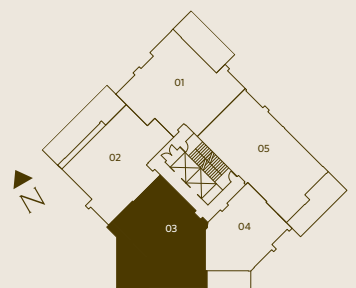


## 2 BEDROOM

Interior living 1,056 sqft

Terrace 220 sqft

Total 1,276 sqft



Floors 2 - 18

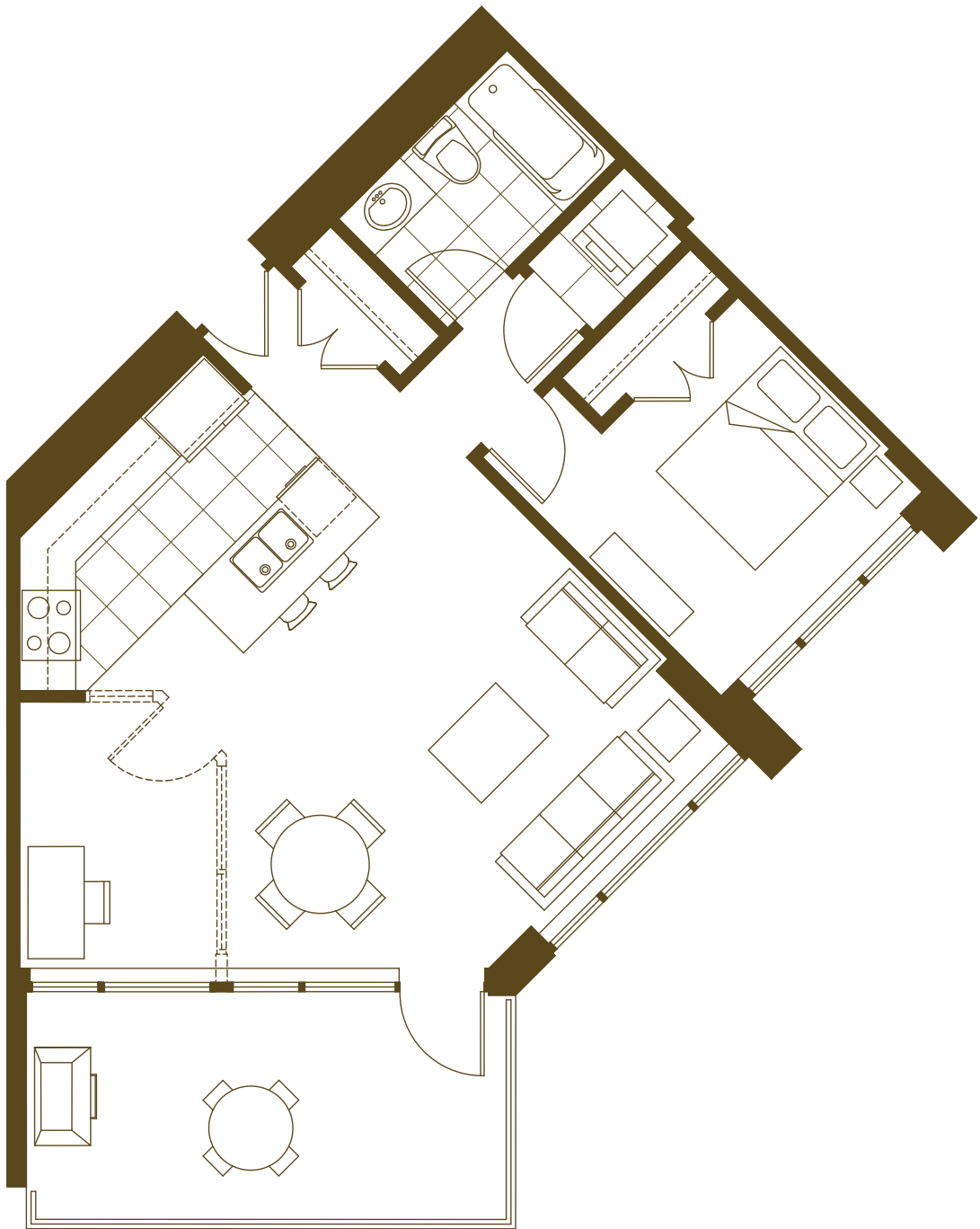
The Developer reserves the right to make modifications and changes to building design, specifications, features, ceiling heights and floor plans without notification. Room sets are for illustration purposes only. These matters will be governed entirely by the terms of the purchase contract and by the information provided for in the disclosure statement. E.&O.E.

Plan

04



JEWEL  
II

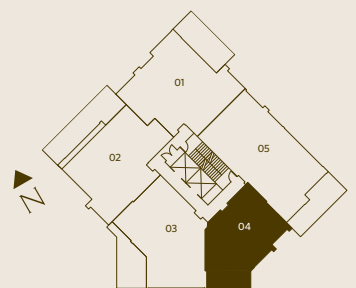


**1 BEDROOM & DEN**

Interior living 750 sqft

Terrace 141 sqft

Total 891 sqft



Floors 2 - 18

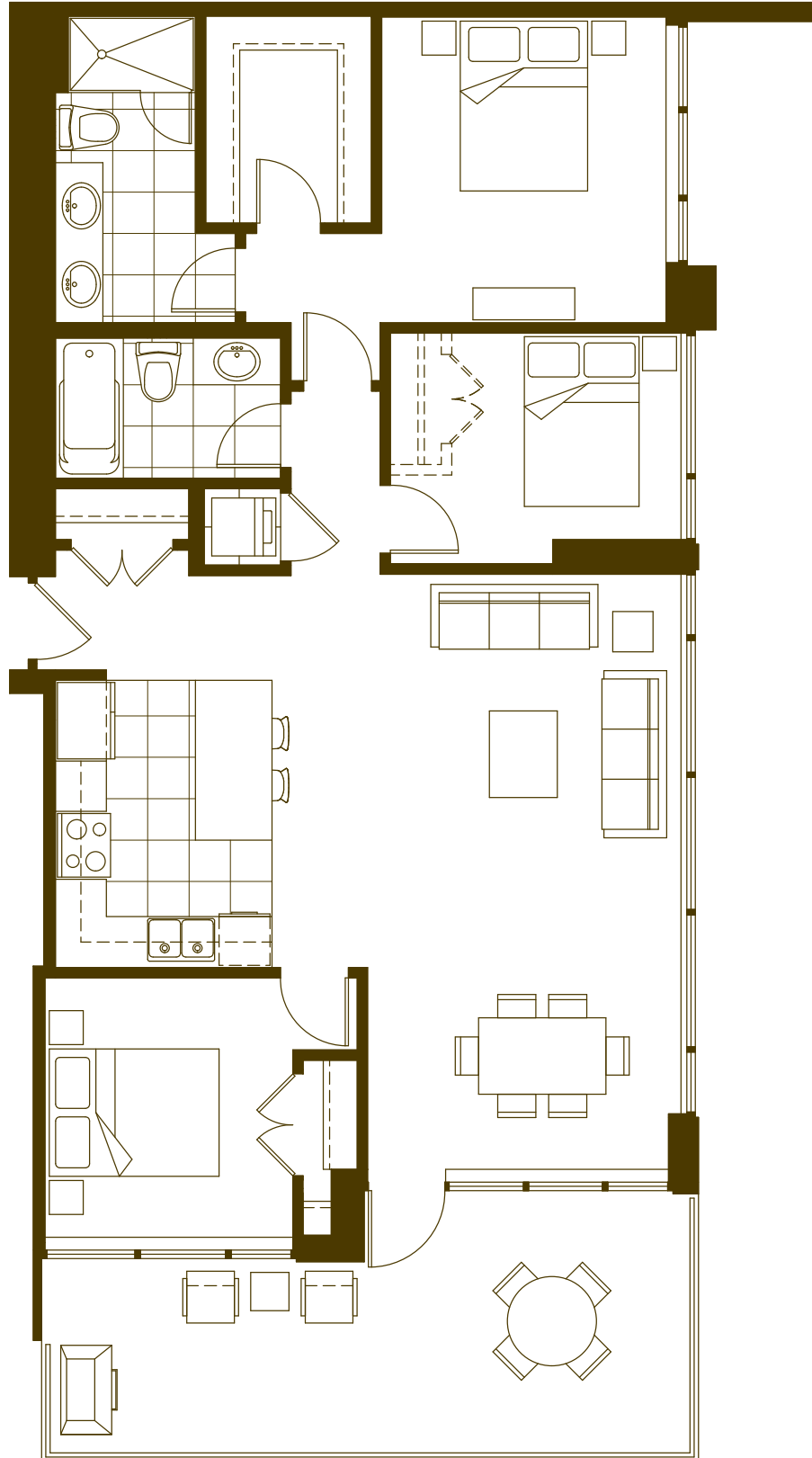
The Developer reserves the right to make modifications and changes to building design, specifications, features, ceiling heights and floor plans without notification. Room sets are for illustration purposes only. These matters will be governed entirely by the terms of the purchase contract and by the information provided for in the disclosure statement. E.&O.E.

Plan

05



JEWEL  
II

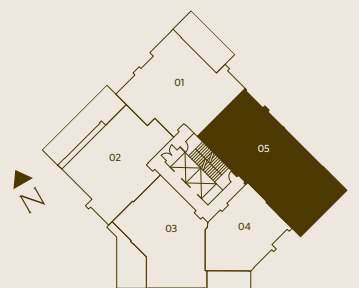


**2 BEDROOM & DEN**

Interior living 1,257 sqft

Terrace 233 sqft

Total 1,490 sqft



Floors 2 - 18

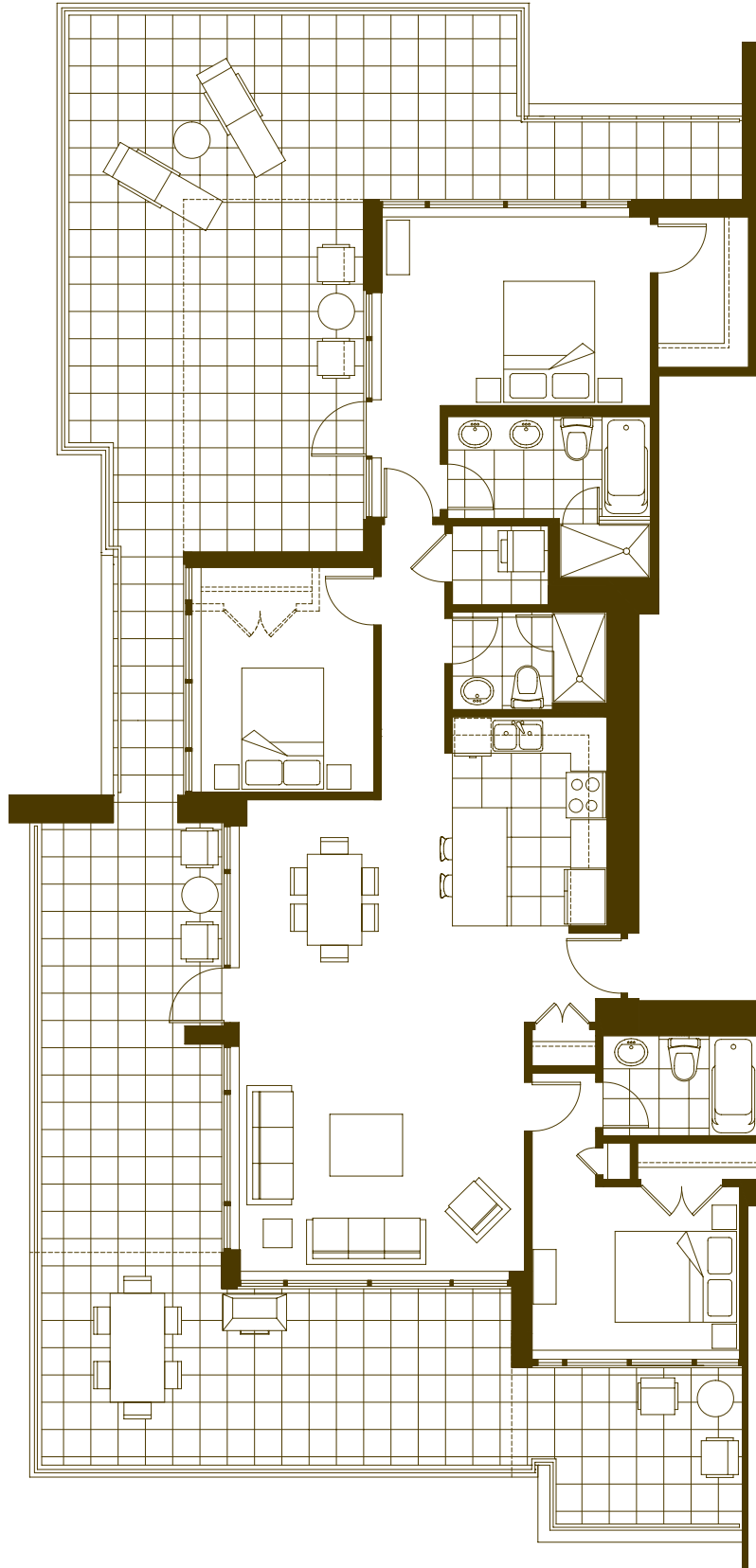
The Developer reserves the right to make modifications and changes to building design, specifications, features, ceiling heights and floor plans without notification. Room sets are for illustration purposes only. These matters will be governed entirely by the terms of the purchase contract and by the information provided for in the disclosure statement. E.&O.E.

Penthouse

# PH-01



JEWEL  
II

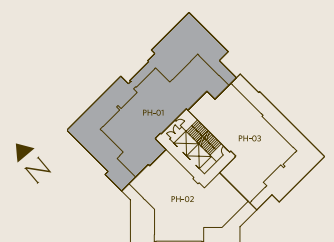


### 3 BEDROOM 3 BATH

Interior living 1,470 sqft

Terrace 1,326 sqft

Total 2,796 sqft



Floor 19

The Developer reserves the right to make modifications and changes to building design, specifications, features, ceiling heights and floor plans without notification. Room sets are for illustration purposes only. These matters will be governed entirely by the terms of the purchase contract and by the information provided for in the disclosure statement. E.&O.E.

Penthouse

# PH-02



JEWEL  
II

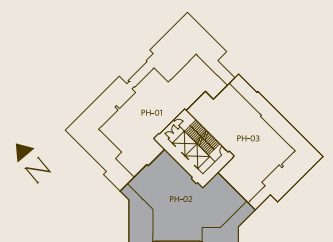


### 3 BEDROOM 3 BATH

Interior living 1,407 sqft

Terrace 453 sqft

Total 1,860 sqft



Floor 19

The Developer reserves the right to make modifications and changes to building design, specifications, features, ceiling heights and floor plans without notification. Room sets are for illustration purposes only. These matters will be governed entirely by the terms of the purchase contract and by the information provided for in the disclosure statement. E.&O.E.

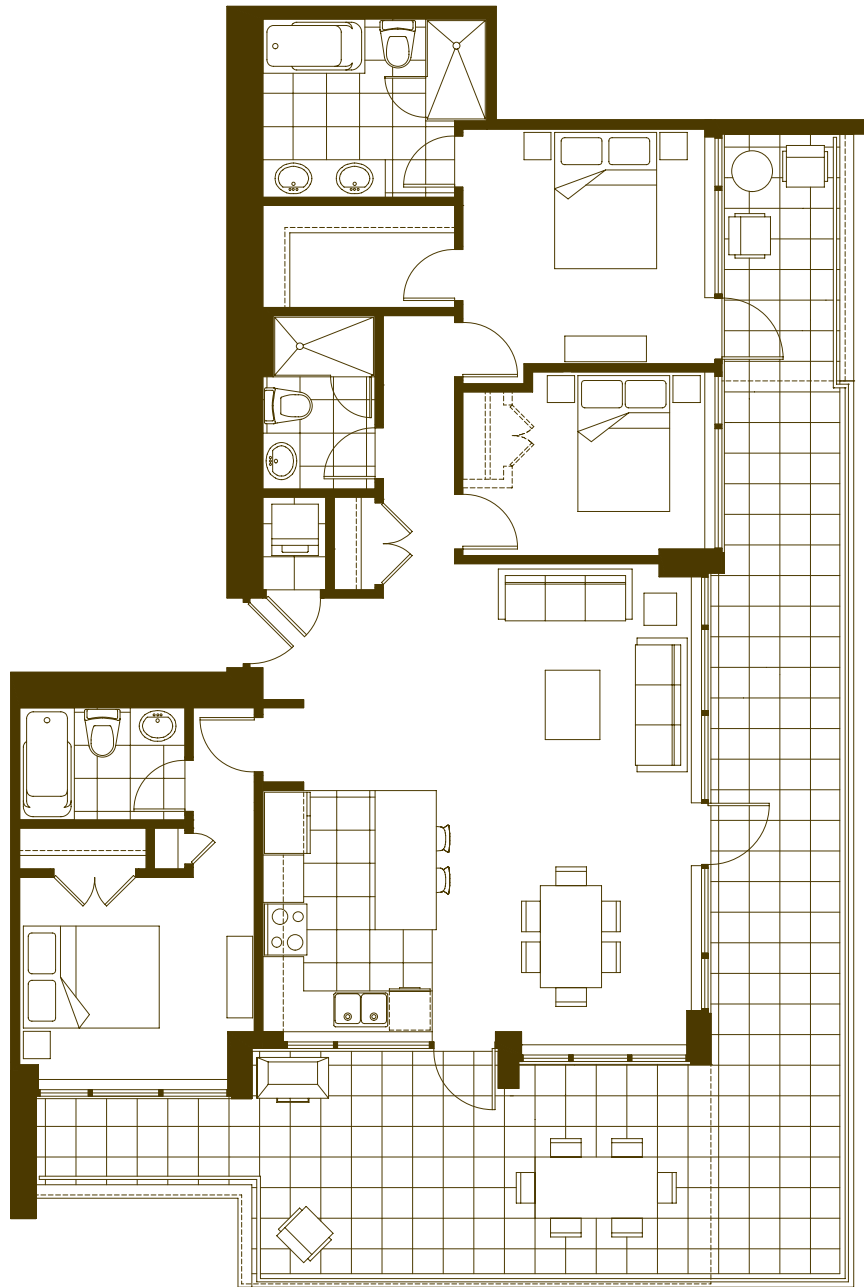


Penthouse

# PH-03



JEWEL  
II

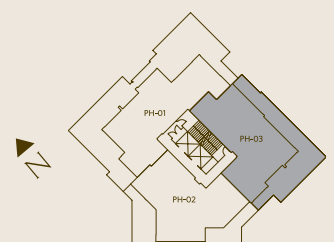


### 3 BEDROOM 3 BATH

Interior living 1,382 sqft

Terrace 653 sqft

Total 2,035 sqft



Floor 19

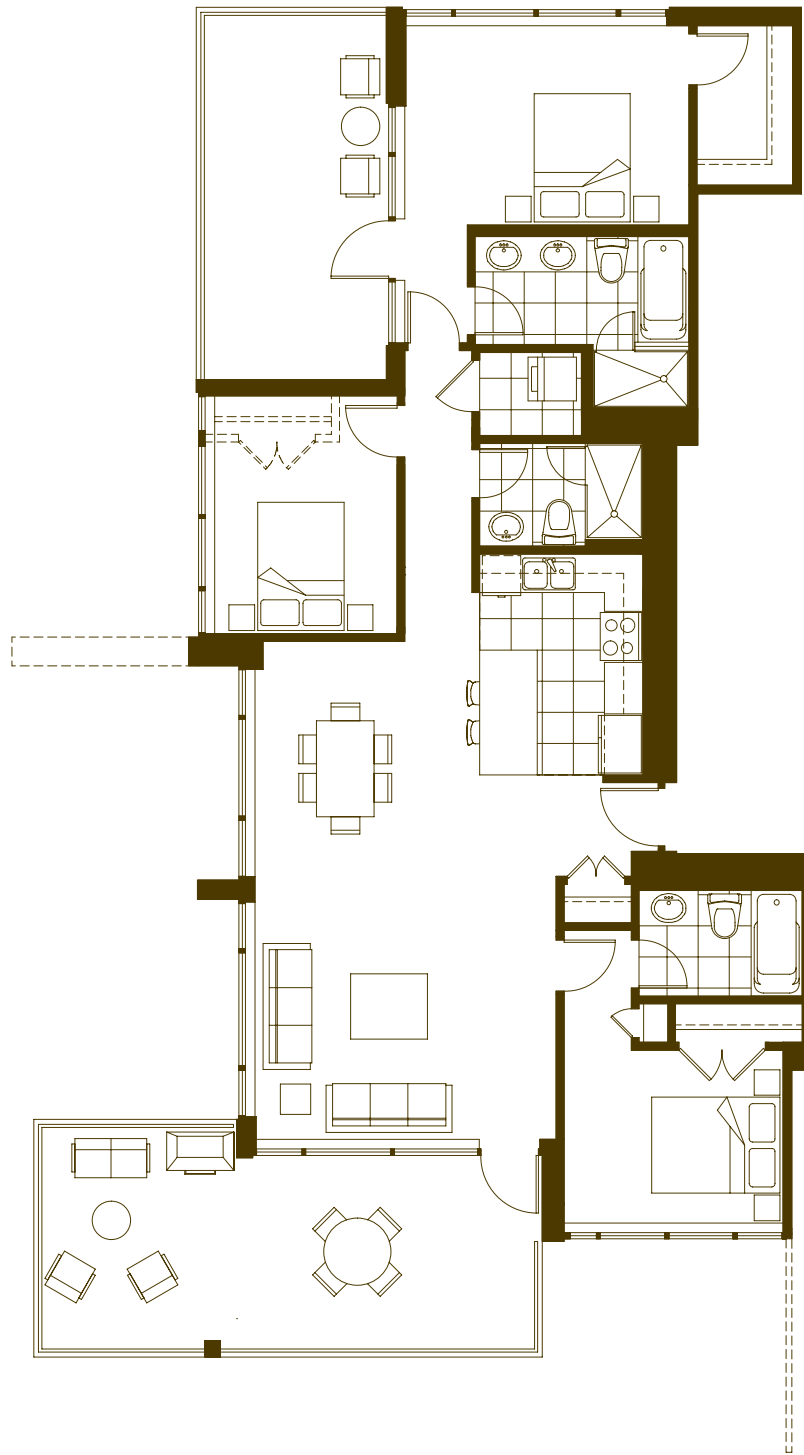
The Developer reserves the right to make modifications and changes to building design, specifications, features, ceiling heights and floor plans without notification. Room sets are for illustration purposes only. These matters will be governed entirely by the terms of the purchase contract and by the information provided for in the disclosure statement. E.&O.E.

Penthouse

# PH-01



JEWEL  
II

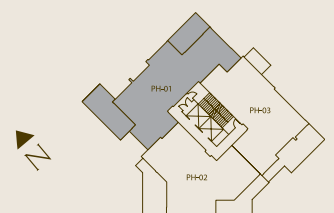


### 3 BEDROOM 3 BATH

Interior living 1,470 sqft

Terrace 467 sqft

Total 1,937 sqft



Floor 20-21

Penthouse

# PH-02



JEWEL  
II

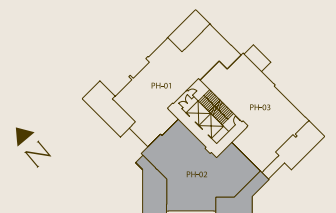


### 3 BEDROOM 3 BATH

Interior living 1,407 sqft

Terrace 500 sqft

Total 1,907 sqft



Floor 20 - 21

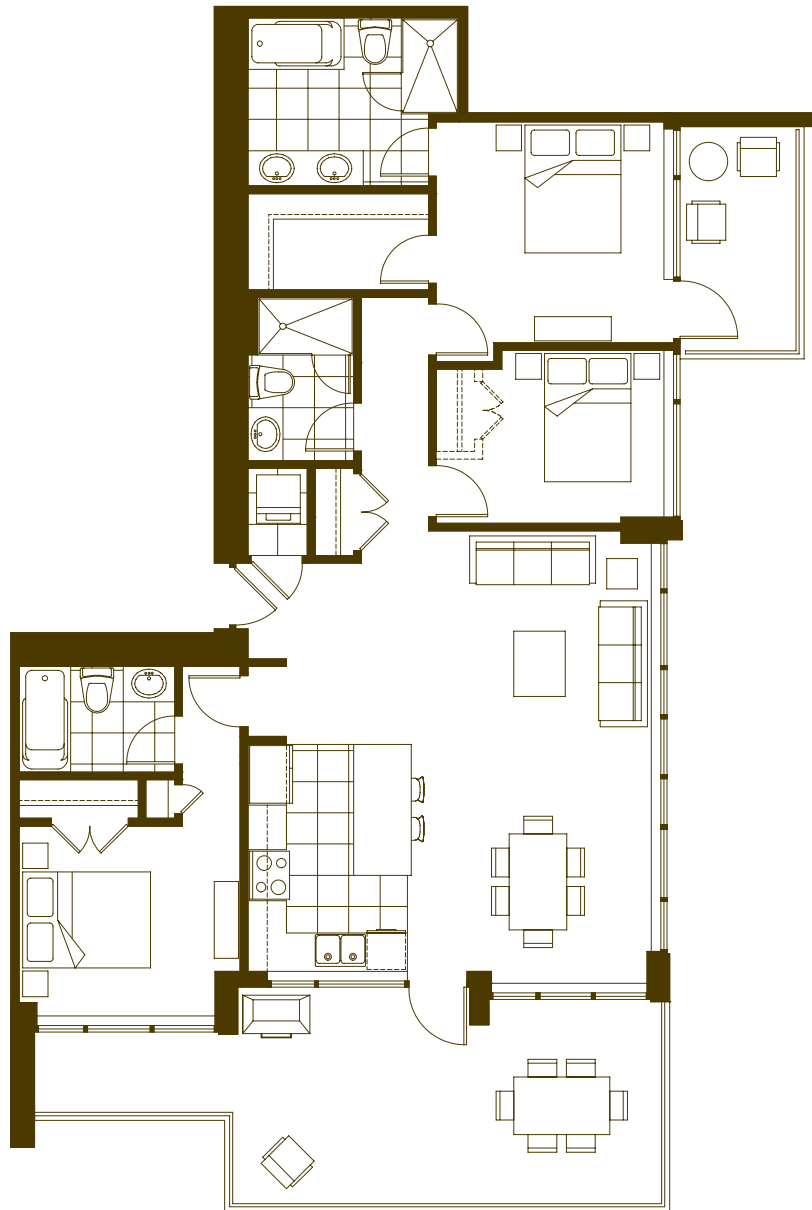
The Developer reserves the right to make modifications and changes to building design, specifications, features, ceiling heights and floor plans without notification. Room sets are for illustration purposes only. These matters will be governed entirely by the terms of the purchase contract and by the information provided for in the disclosure statement. E.&O.E.

Penthouse

# PH-03



J E W E L  
I I

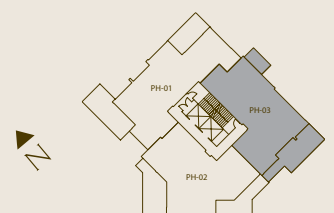


### 3 BEDROOM 3 BATH

Interior living 1,382 sqft

Terrace 364 sqft

Total 1,746 sqft

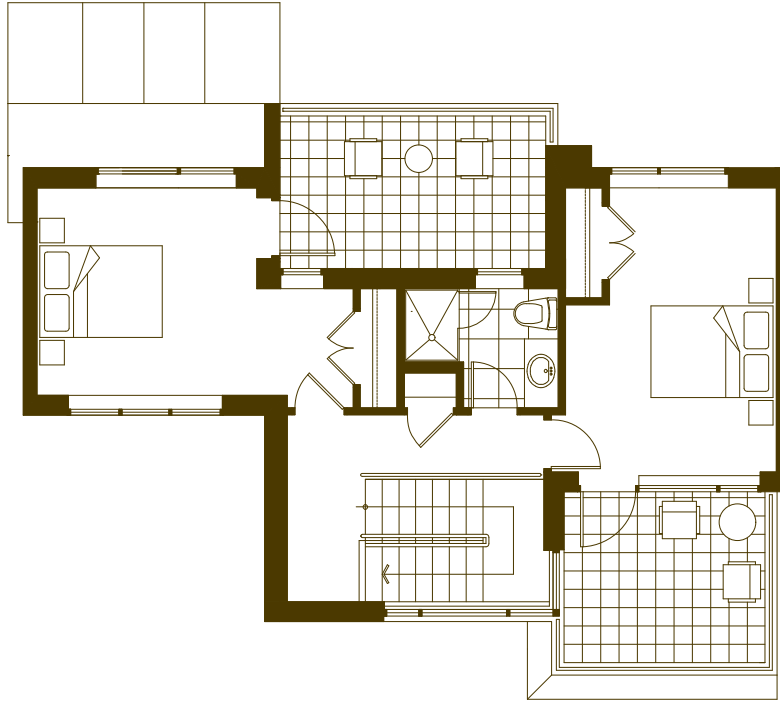


Floor 20 - 21

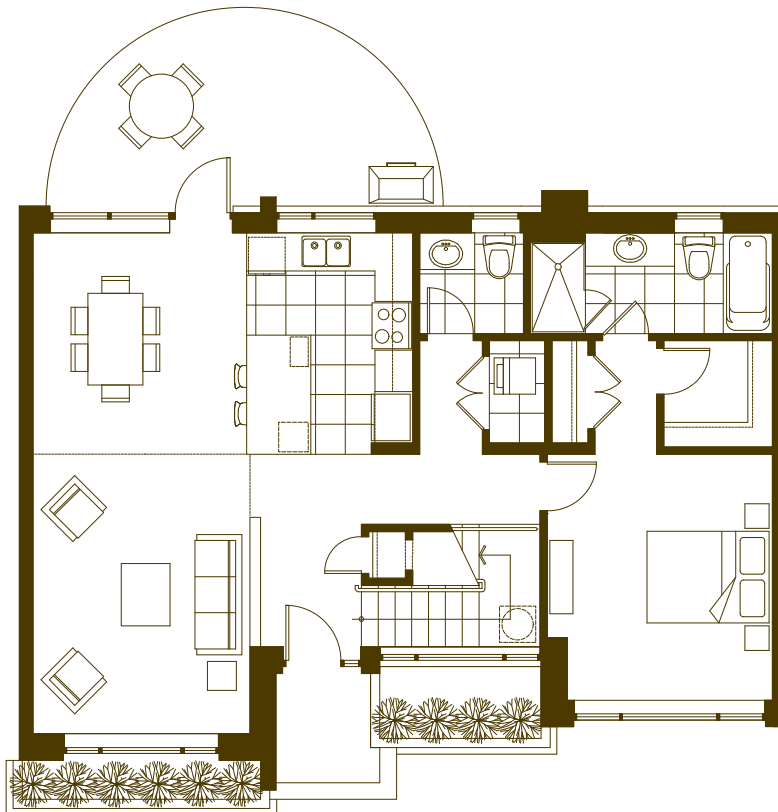
The Developer reserves the right to make modifications and changes to building design, specifications, features, ceiling heights and floor plans without notification. Room sets are for illustration purposes only. These matters will be governed entirely by the terms of the purchase contract and by the information provided for in the disclosure statement. E.&O.E.

# Townhome

JEWEL  
II

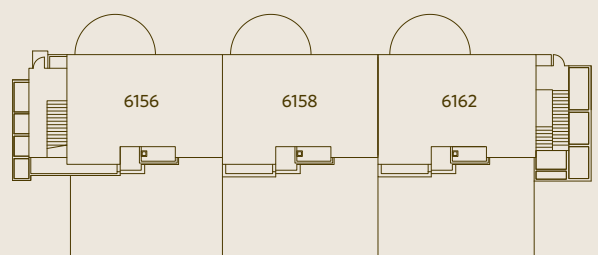


UPPER LEVEL



MAIN LEVEL

**3 BEDROOM 2.5 BATH**  
Interior living 1,855 sqft



WILSON AVENUE