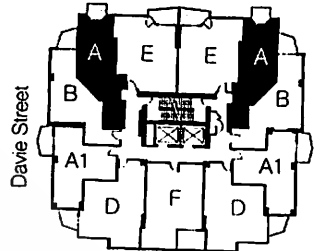
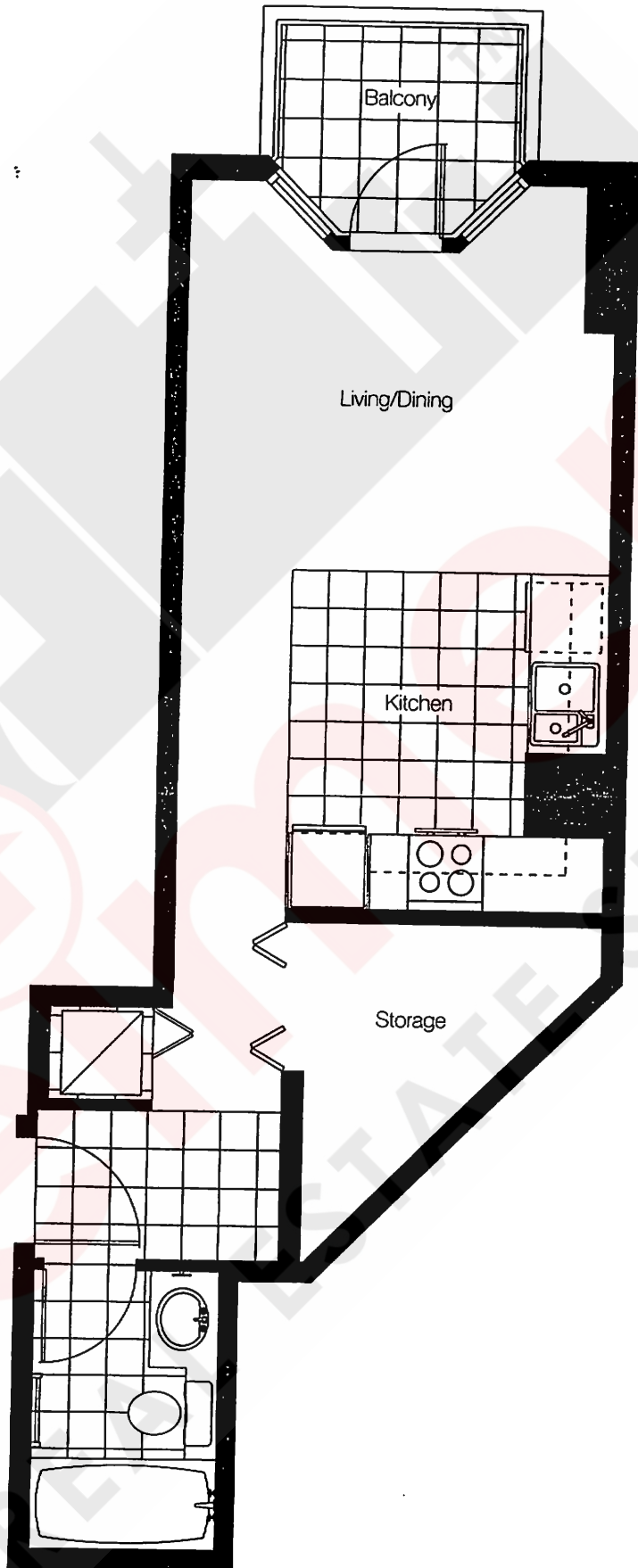




**GENESIS**  
THE RE CREATION OF URBAN LIVING

A

Studio  
Floors 2 to 8  
406 to 413 sq. ft.



Howe Street  
Floors 2 to 8

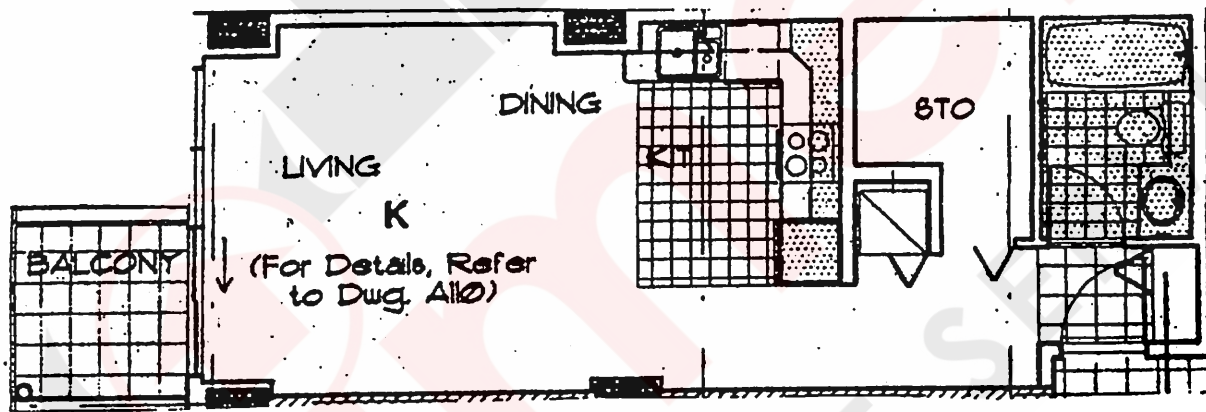
*Note: Building floor plate varies from Floors 2 to 5*



# GENESIS

THE RE-CREATION OF URBAN LIVING

UNIT TYPE: A3



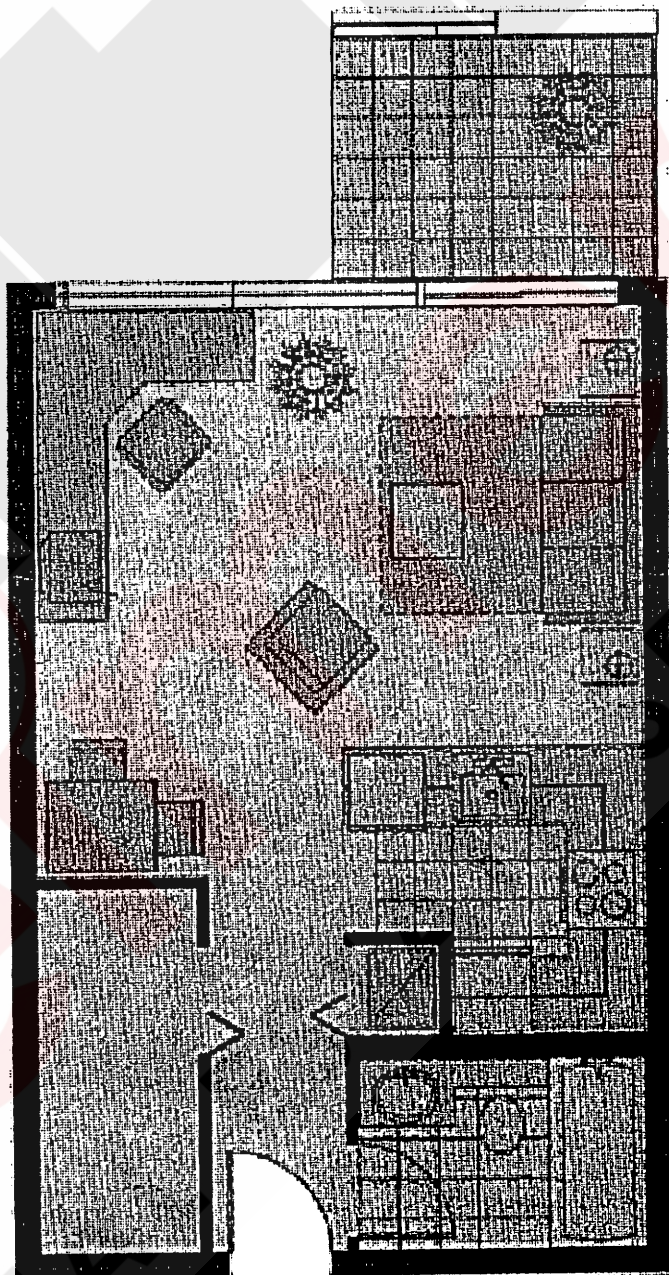
THIRD FLOOR



GENESIS  
THE RE-CREATION OF URBAN LIVING

B3

421-428 sq.ft.  
2/F-3/F



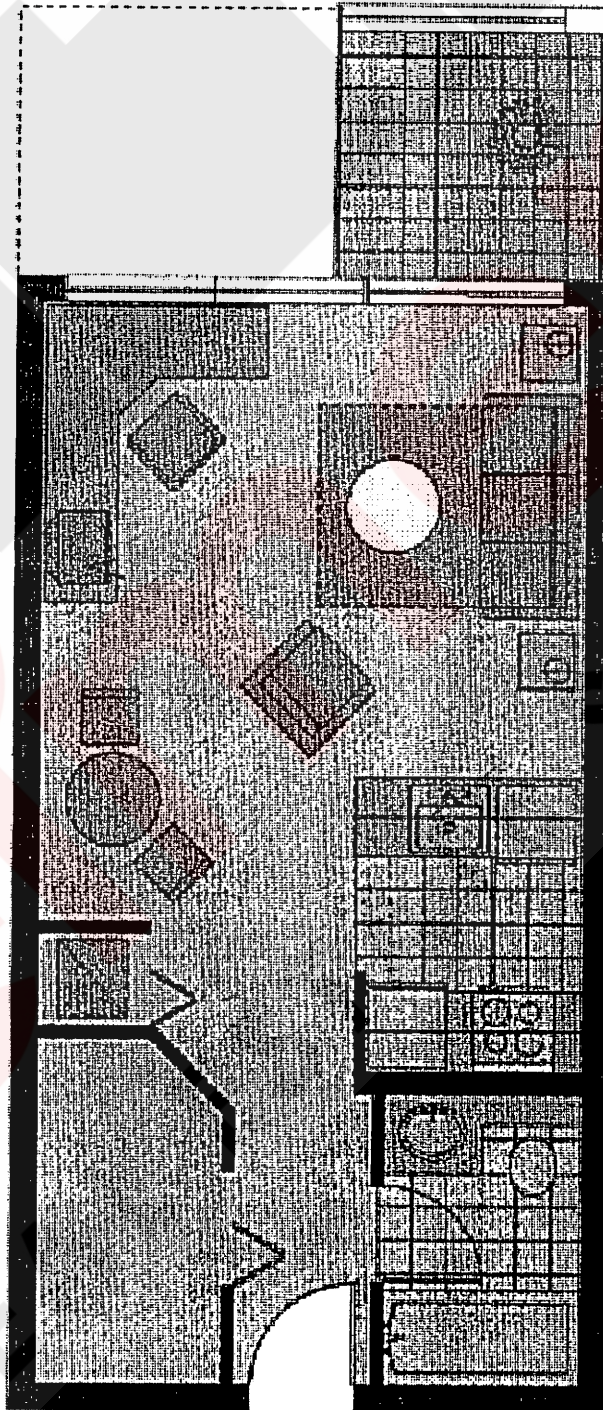




GENESIS  
THE RE-CREATION OF URBAN LIVING

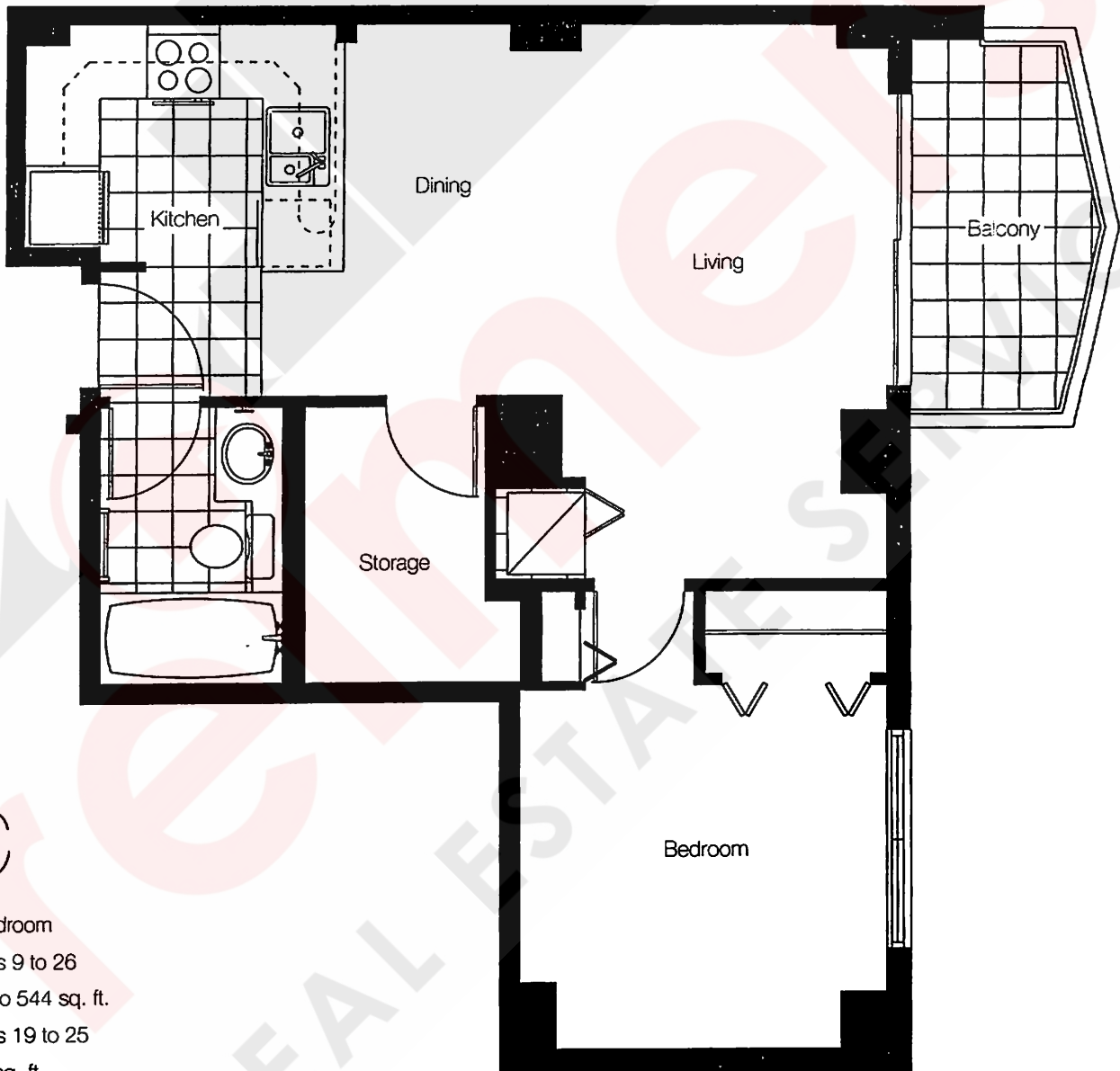
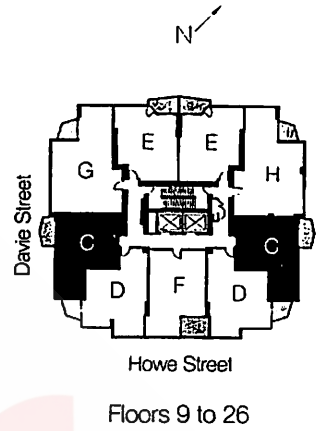
B5

413 sq.ft.  
2/F-3/F





**GENESIS**  
THE RE-CREATION OF URBAN LIVING



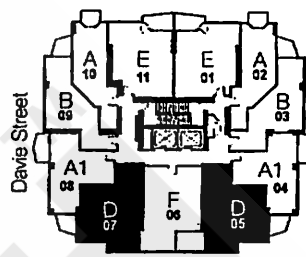
**C**

1 Bedroom  
Floors 9 to 26  
540 to 544 sq. ft.  
Floors 19 to 25  
602 sq. ft.

*Note: Enclosed balcony on  
Floors 19 to 25*

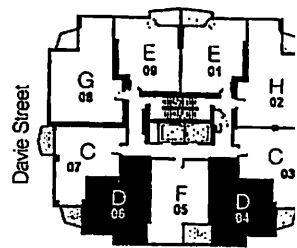


**GENESIS**  
THE RE-CREATION OF URBAN LIVING



Howe Street

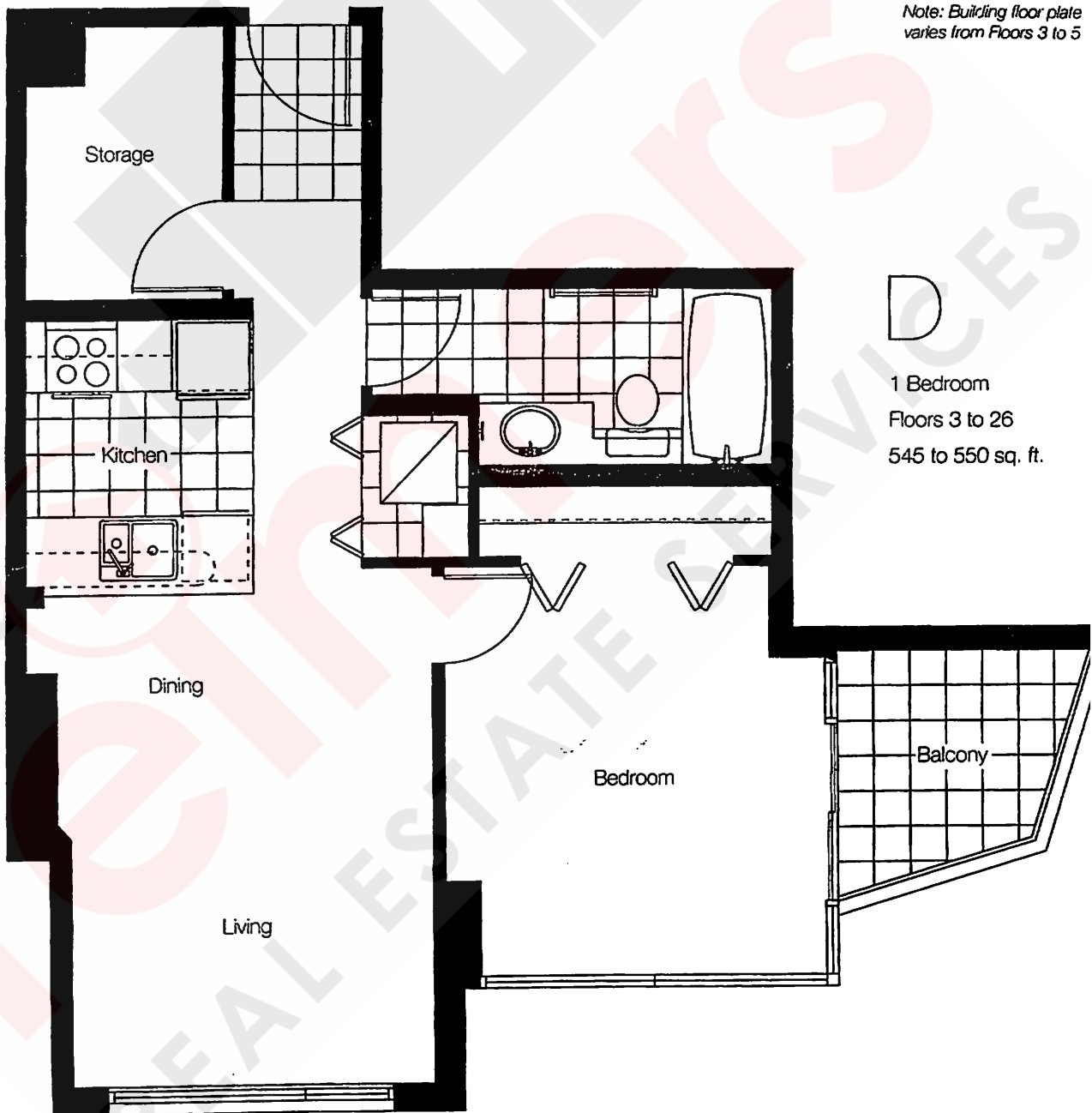
Floors 3 to 8



Howe Street

Floors 9 to 26

*Note: Building floor plate varies from Floors 3 to 5*

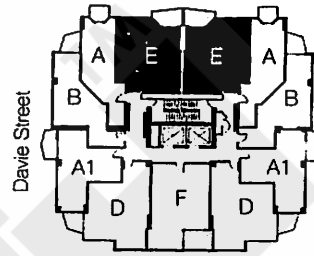


1 Bedroom  
Floors 3 to 26  
545 to 550 sq. ft.



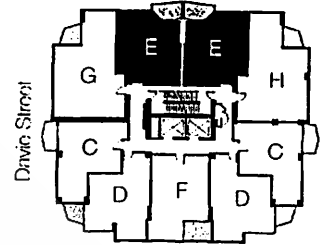
**GENESIS**  
THE RE-CREATION OF URBAN LIVING

N



Howe Street

Floors 3 to 8



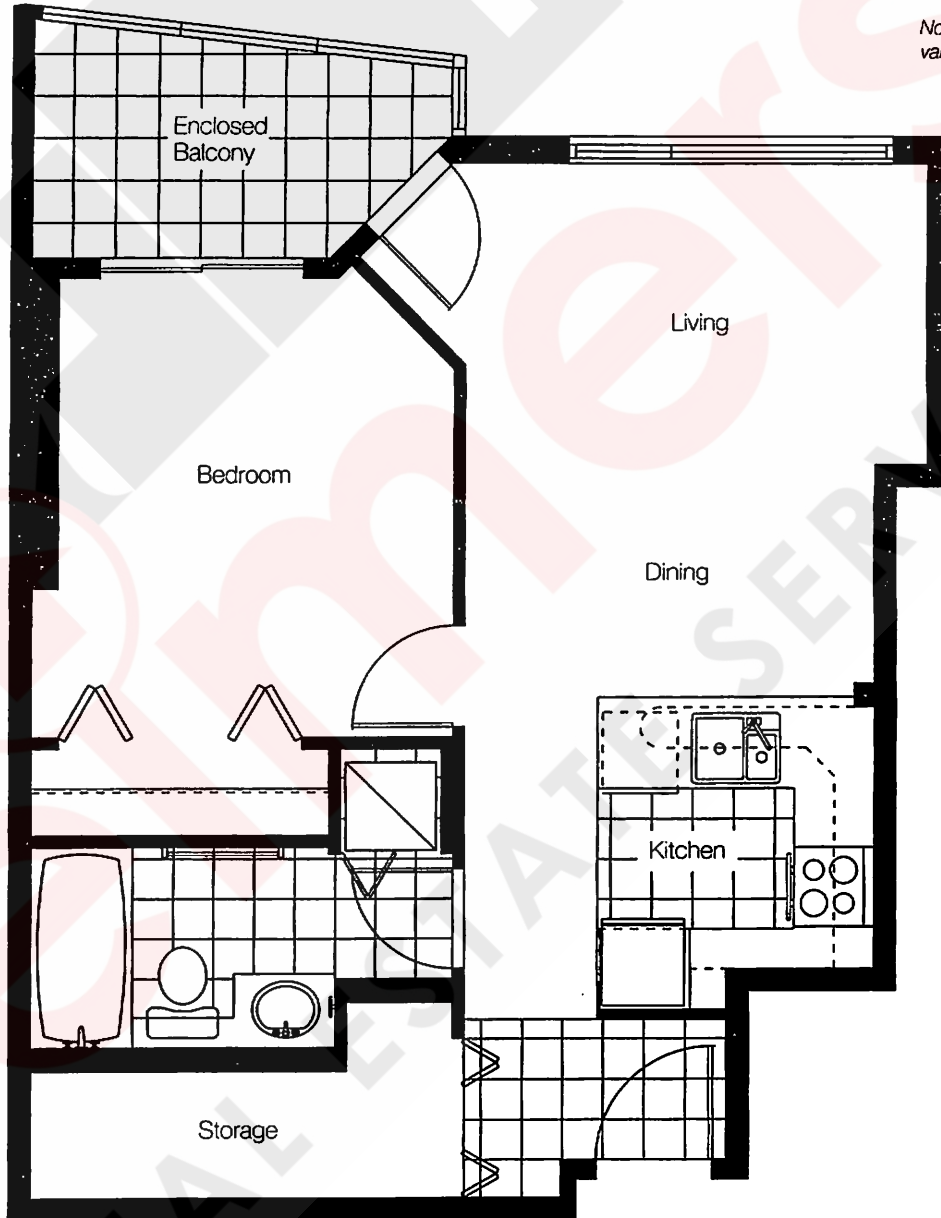
Howe Street

Floors 9 to 26

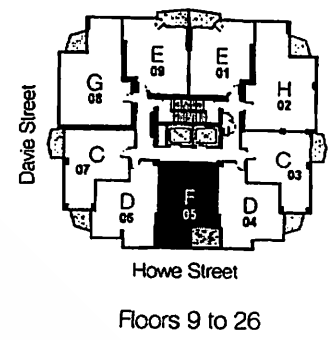
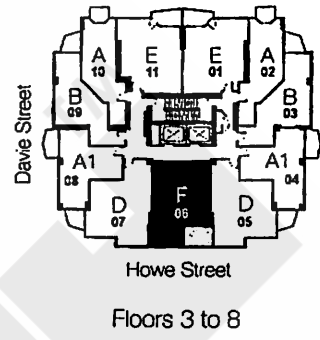
*Note: Building floor plate varies from Floors 3 to 5*



1 Bedroom  
Floors 2 to 26  
604 to 607 sq. ft.



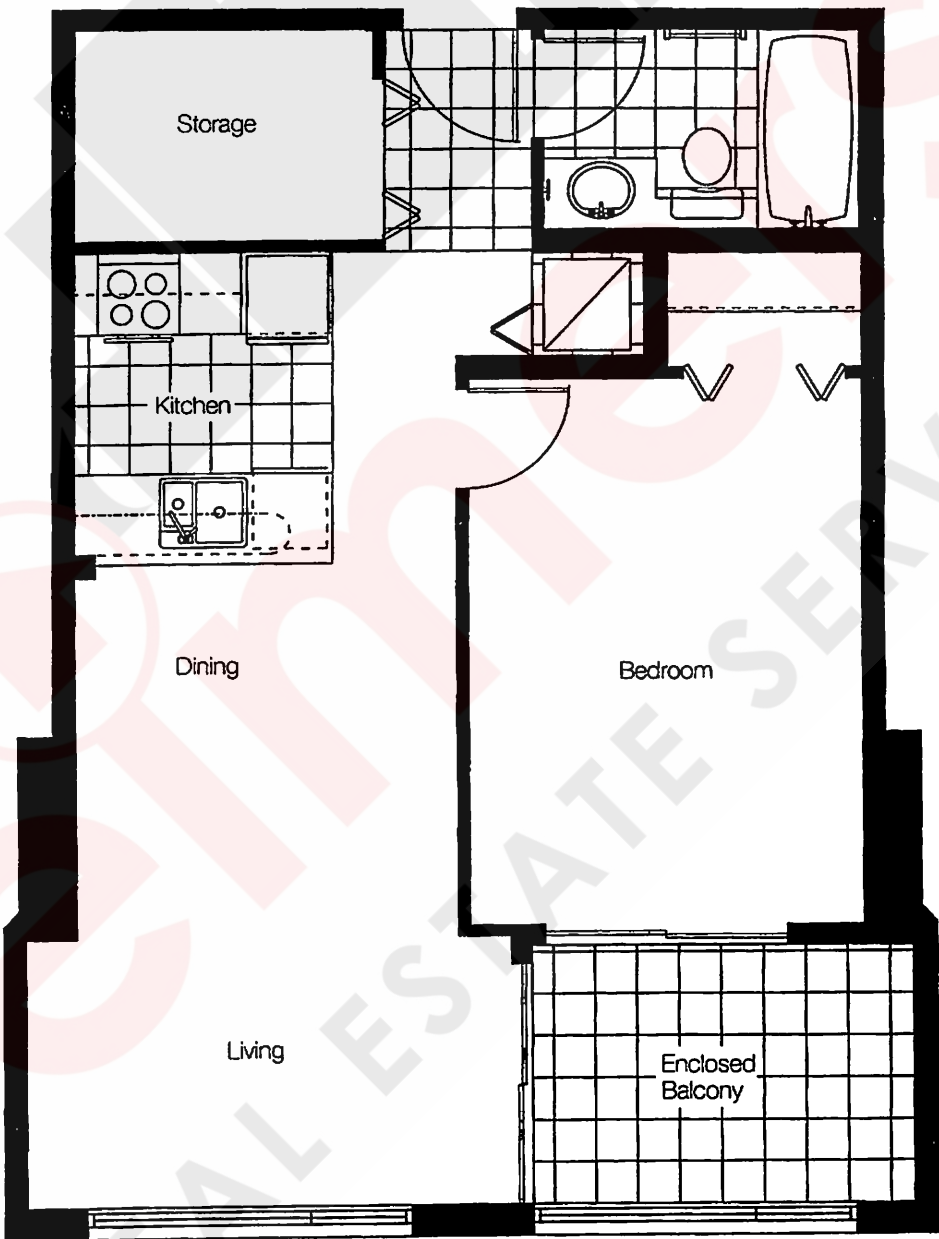




*Note: Building floor plate varies from Floors 3 to 5*

F

1 Bedroom  
 Floors 3 to 26  
 629 to 630 sq. ft.



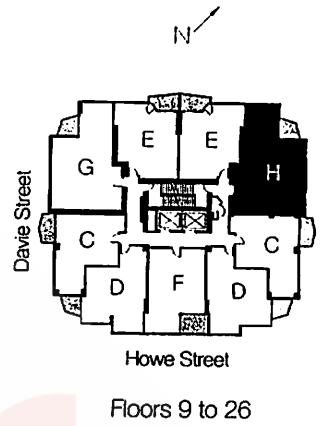
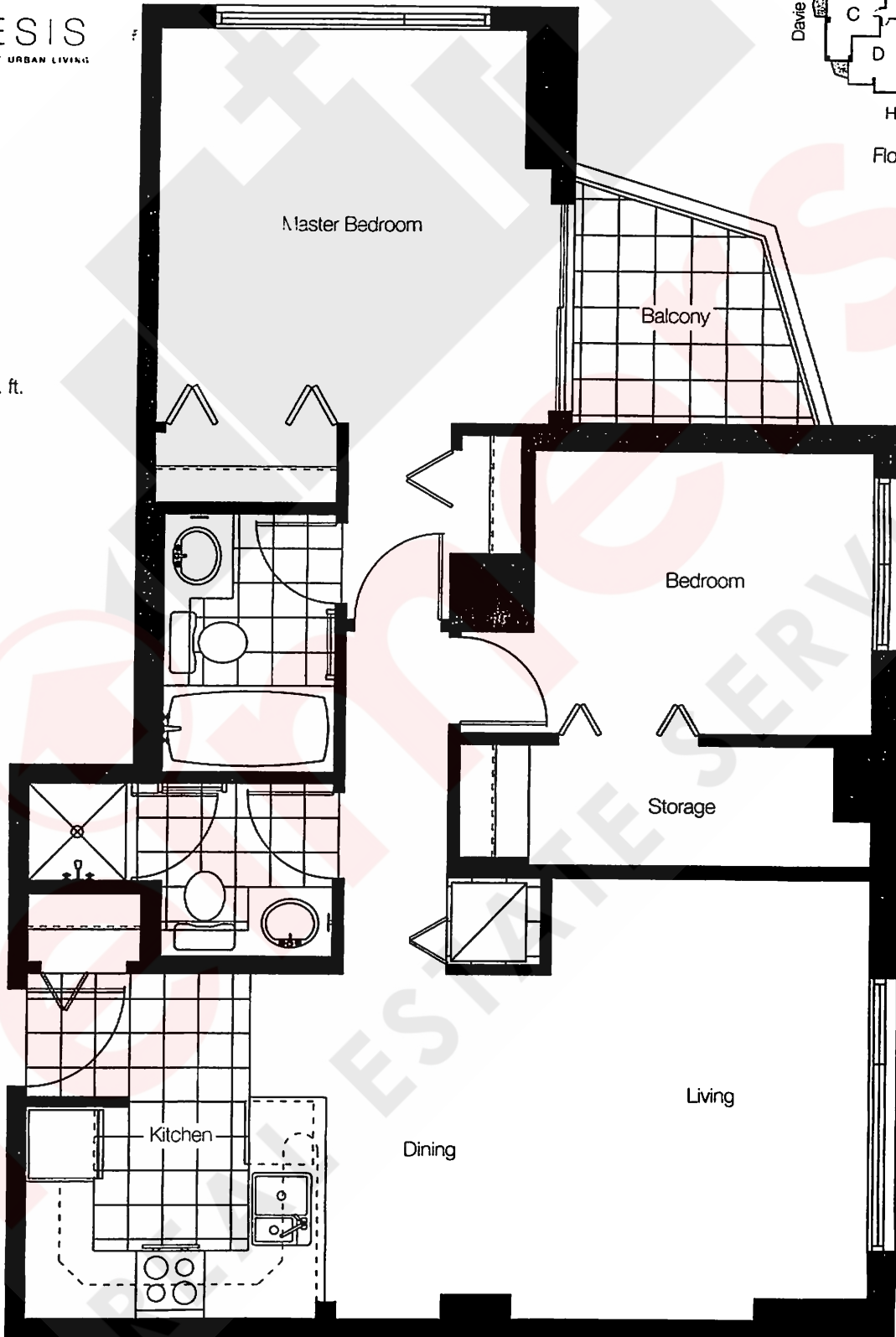
In the continuing effort to improve our product, the developer reserves the right to make modifications and changes to plans and specifications without prior notice. All sizes are approximate.



**GENESIS**  
THE RE-CREATION OF URBAN LIVING

H

2 Bedroom  
Floors 9 to 26  
790 to 792 sq. ft.



In the continuing effort to improve our product, the developer reserves the right to make modifications and changes to plans and specifications without prior notice. All sizes are approximate.



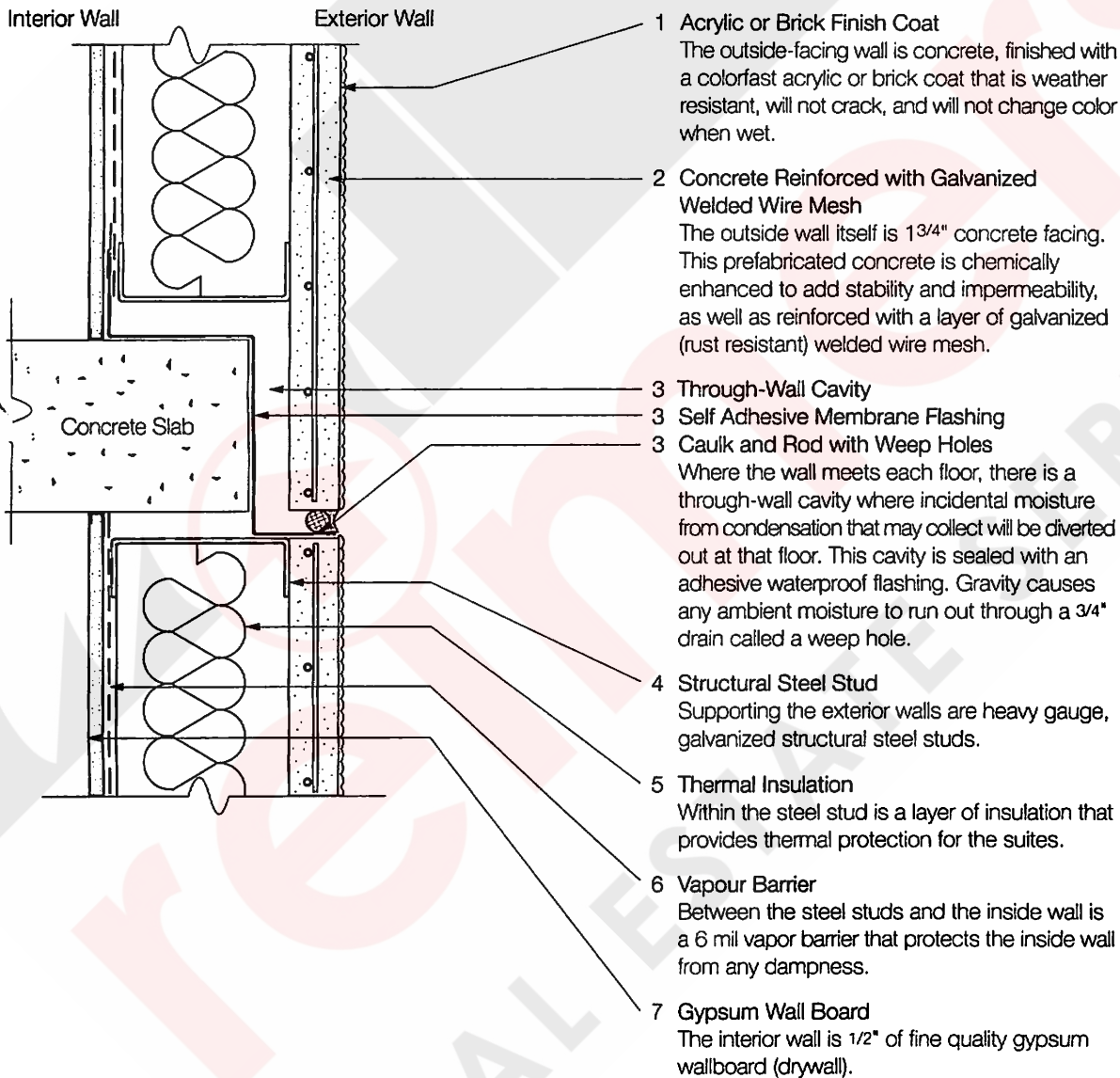
**GENESIS**  
THE RE-CREATION OF URBAN LIVING

# The Genesis Wall System

The reinforced concrete wall system at Genesis brings peace of mind to home owners concerned about the effects of weather and the long-term durability of their building.

Made from factory-produced prefabricated concrete panels, Genesis has been designed with a unique multi-layer construction designed for water protection and endurance. The wall actually drains incidental moisture away.

Here's how it works:



To ensure that the building's envelope integrity is maintained, double seals are used extensively around all windows and all places where concrete and brick meet.

Genesis is a Kensfield Development Ltd. building, built with quality to assure you of weather resistance, durability, and enduring value.