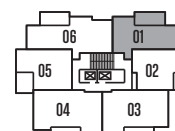




PLAN 01

1 BEDROOM, 1 BATHROOM

630 SQ.FT.



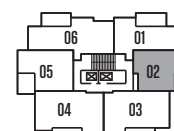
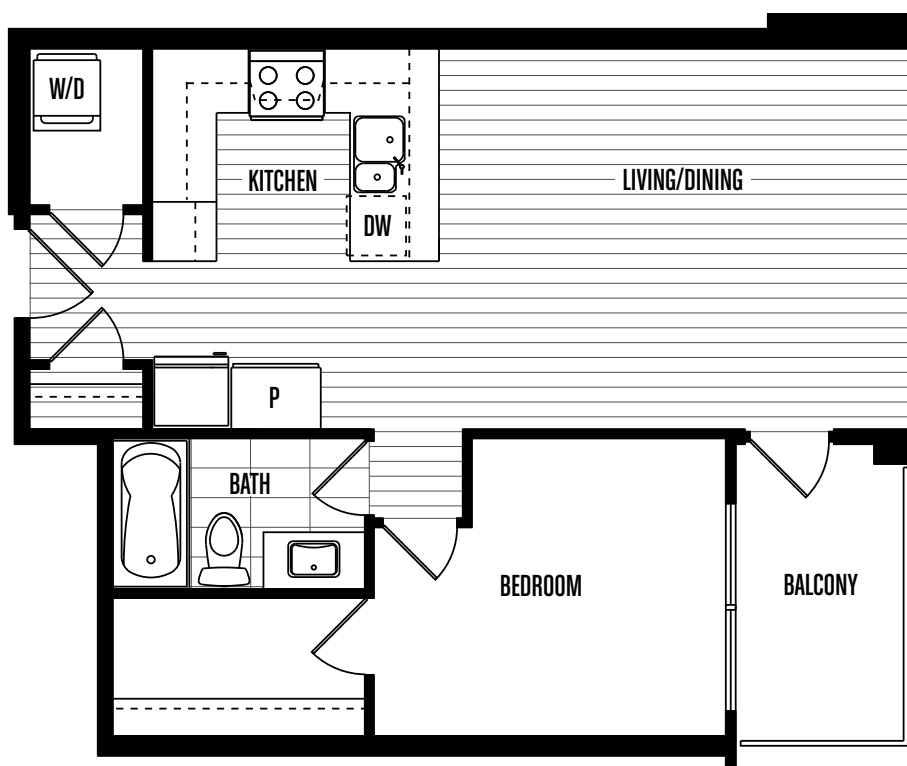
Floors 5-21



PLAN 02

1 BEDROOM, 1 BATHROOM

625 SQ.FT.



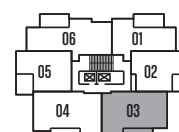
Floors 5-21



PLAN 03

2 BEDROOM, 2 BATHROOM

847 SQ.FT.



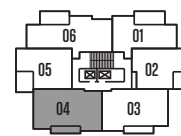
Floor 5-21



PLAN 04

2 BEDROOM, 2 BATHROOM

839 SQ.FT.



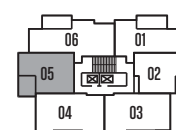
Floors 5-21



PLAN 05

1 BEDROOM, 1 BATHROOM

652 SQ.FT.



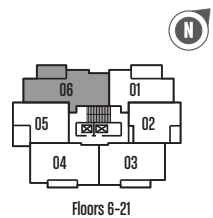
Floors 5-21



PLAN 06

2 BEDROOM, 2 BATHROOM

880 SQ.FT.

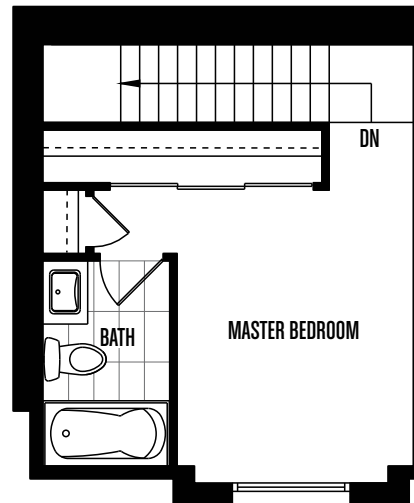
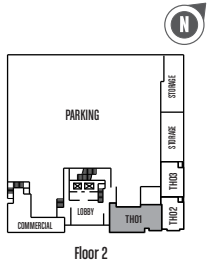




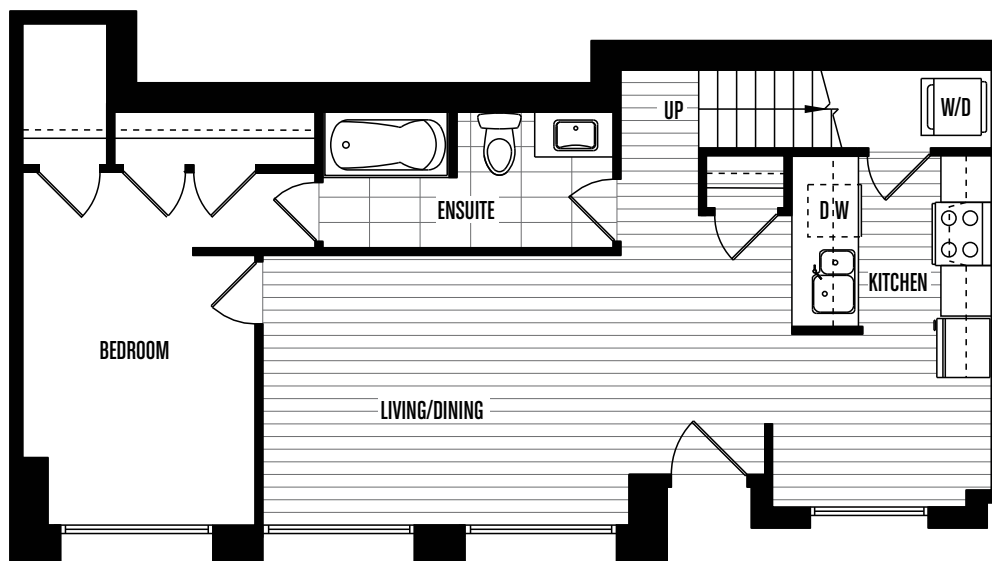
PLAN TH01

2 BEDROOM, 2 BATHROOM

1,017 SQ.FT.



SECOND FLOOR



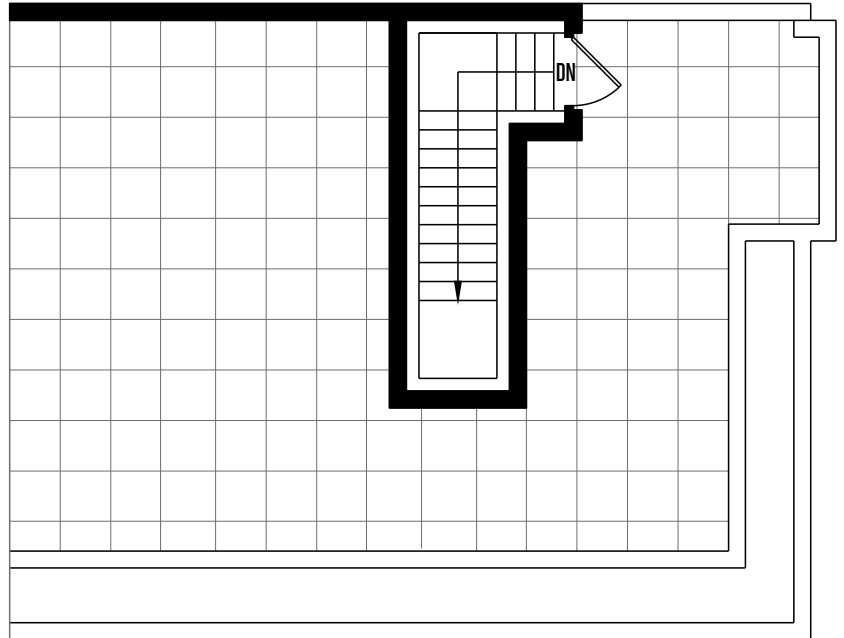
MAIN FLOOR



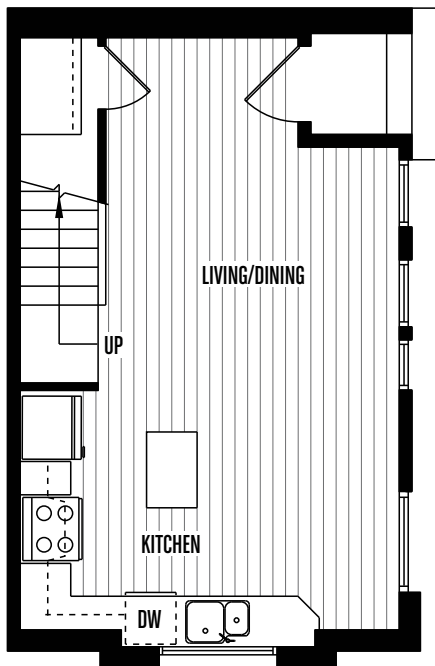
PLAN TH02

3 BEDROOM, 2 BATHROOM

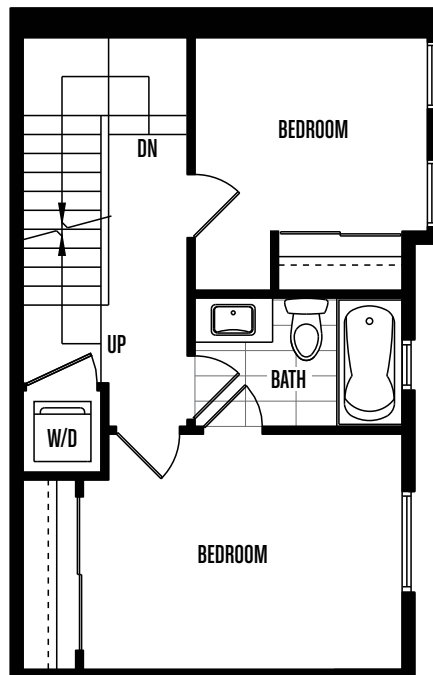
1,261 SQ.FT.



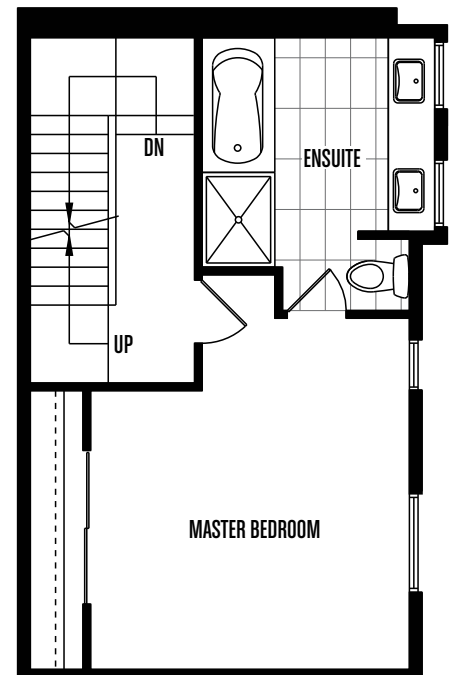
ROOF DECK



MAIN FLOOR



SECOND FLOOR



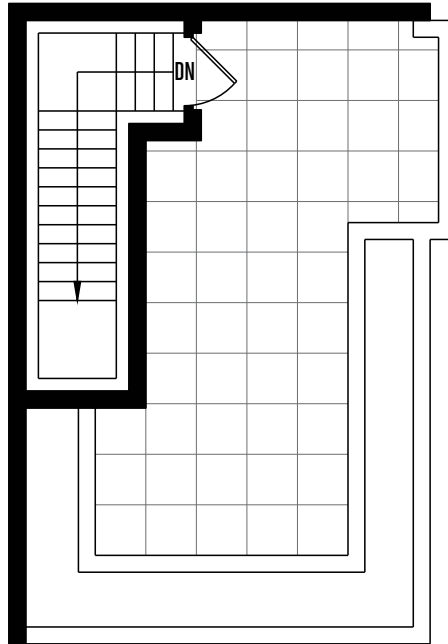
THIRD FLOOR



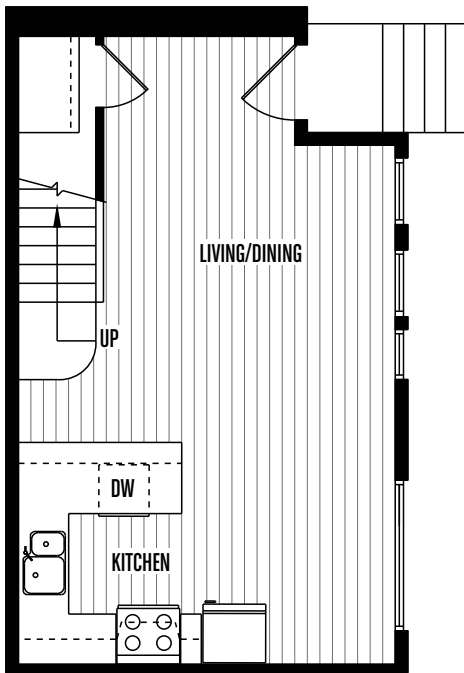
PLAN TH03

3 BEDROOM, 2 BATHROOM

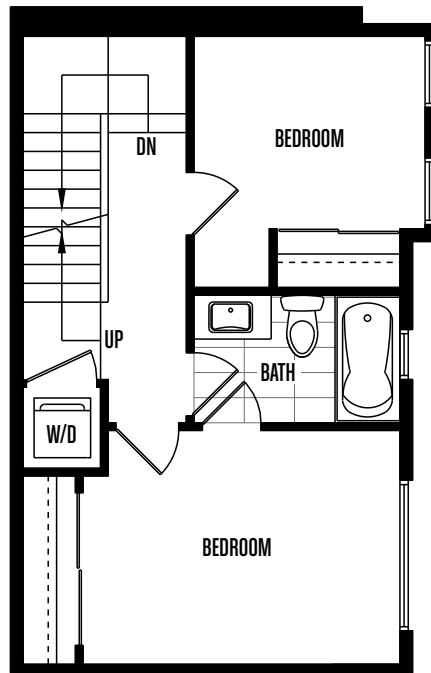
1,340 SQ.FT.



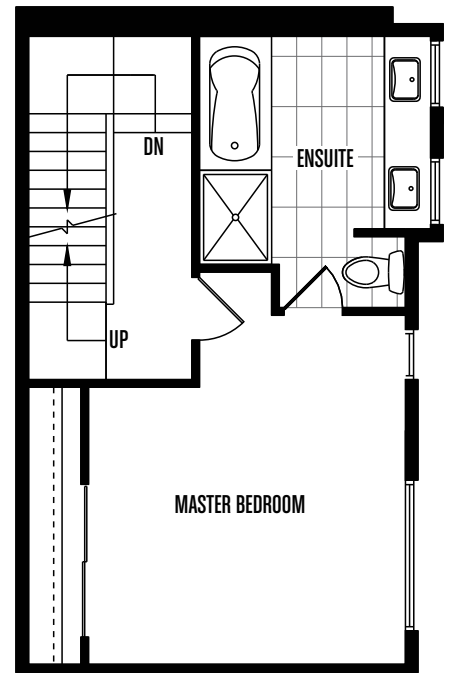
ROOF DECK



MAIN FLOOR



SECOND FLOOR



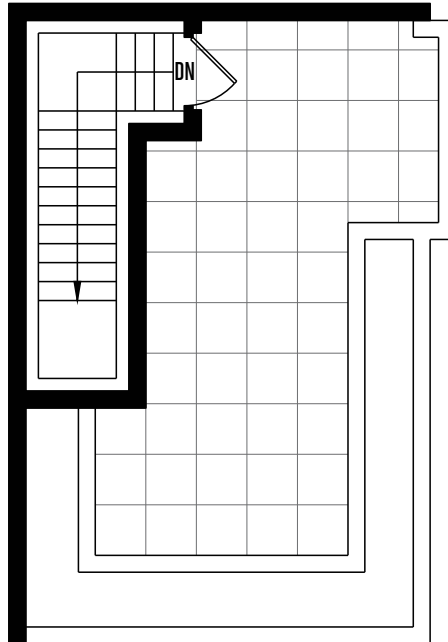
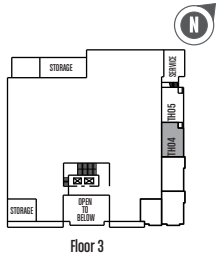
THIRD FLOOR



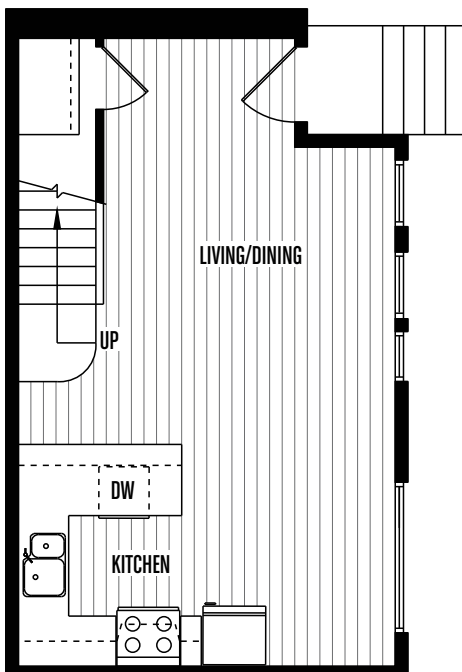
PLAN TH04

3 BEDROOM, 2 BATHROOM

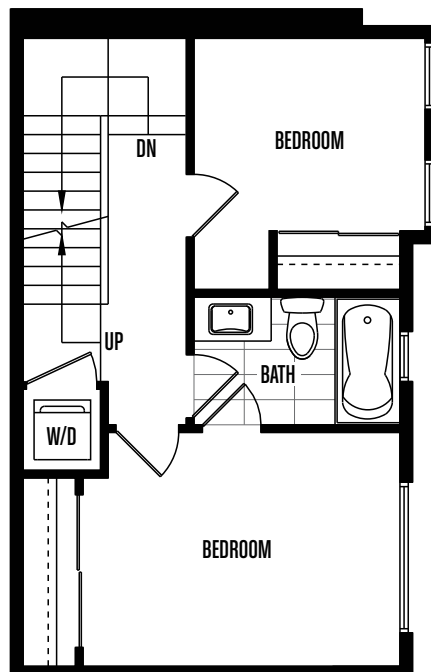
1,333 SQ.FT.



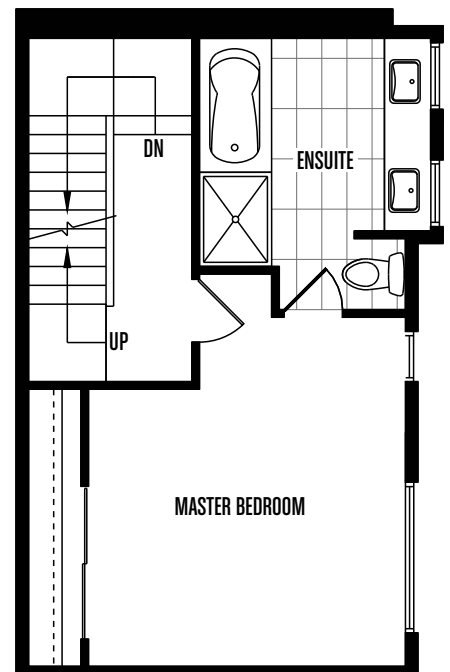
ROOF DECK



MAIN FLOOR



SECOND FLOOR



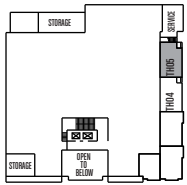
THIRD FLOOR



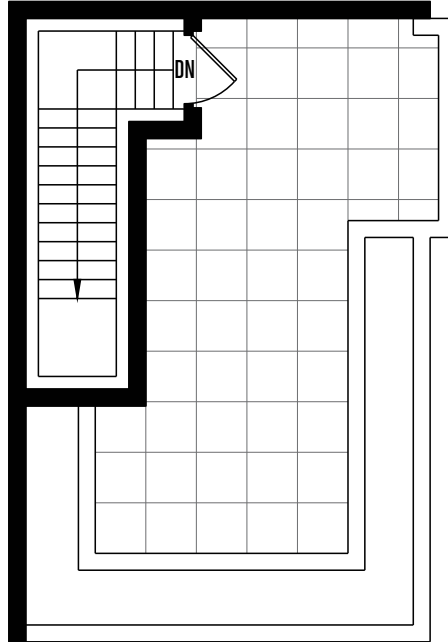
PLAN TH05

3 BEDROOM, 2 BATHROOM

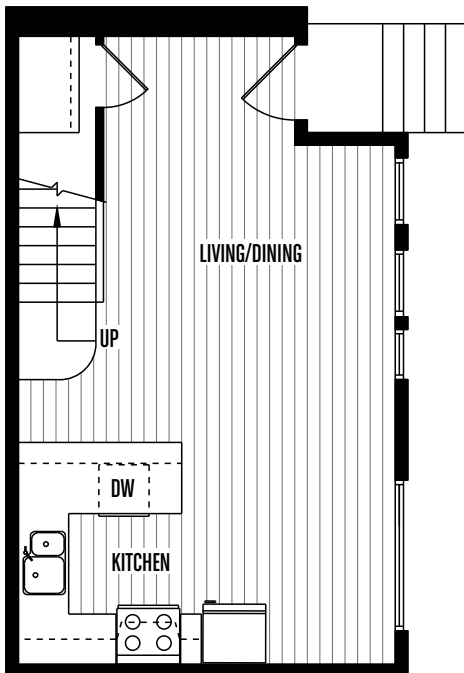
1,354 SQ.FT.



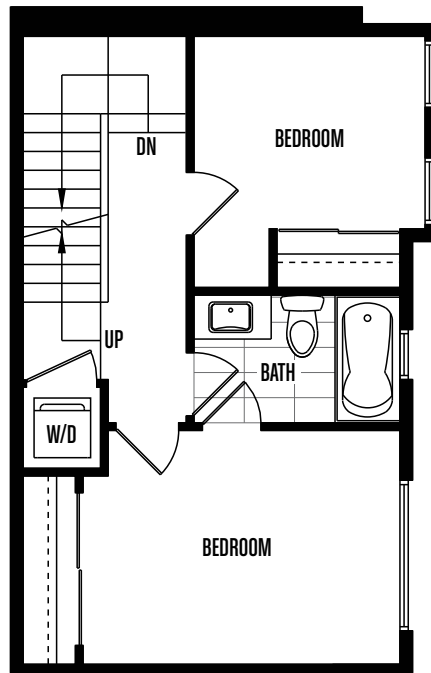
Floor 3



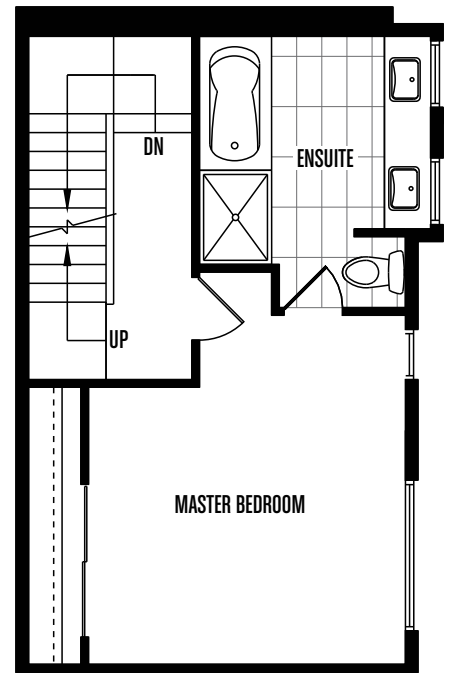
ROOF DECK



MAIN FLOOR



SECOND FLOOR



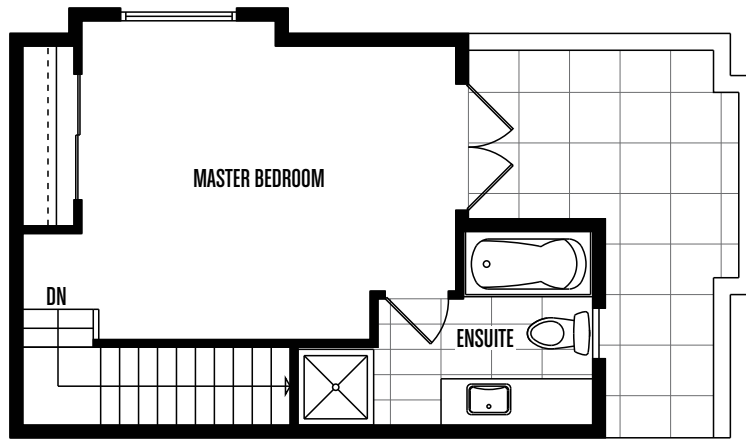
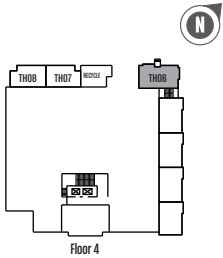
THIRD FLOOR



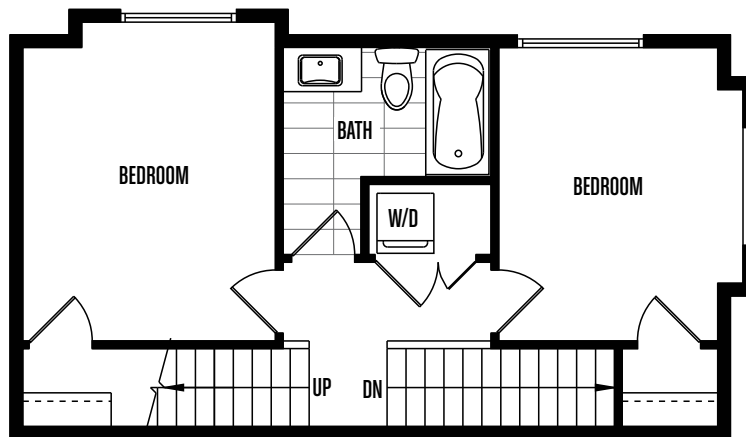
PLAN TH06

3 BEDROOM, 2.5 BATHROOM

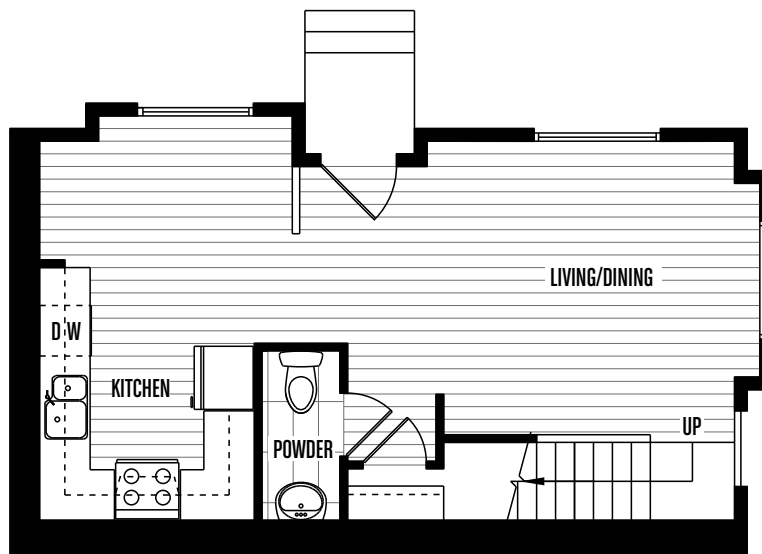
1,316 SQ.FT.



THIRD FLOOR



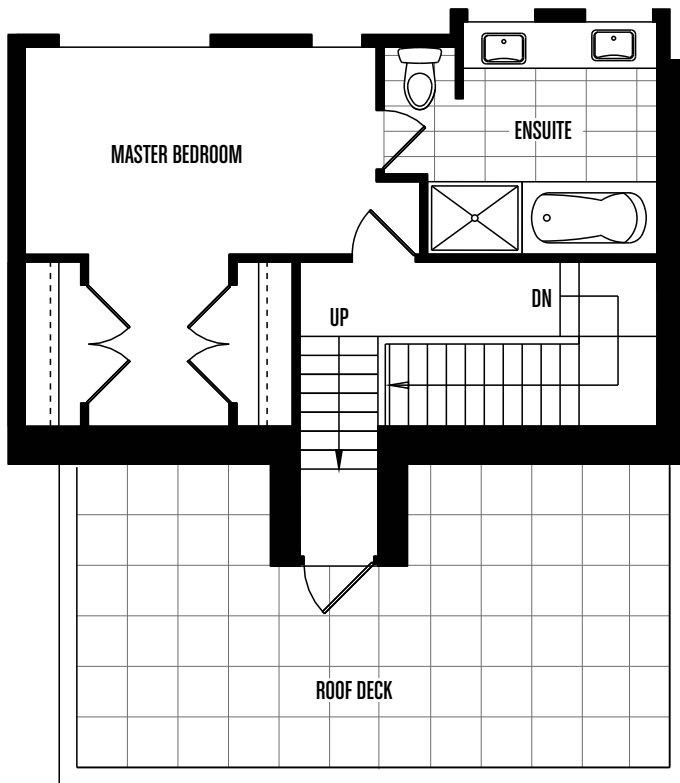
SECOND FLOOR



MAIN FLOOR



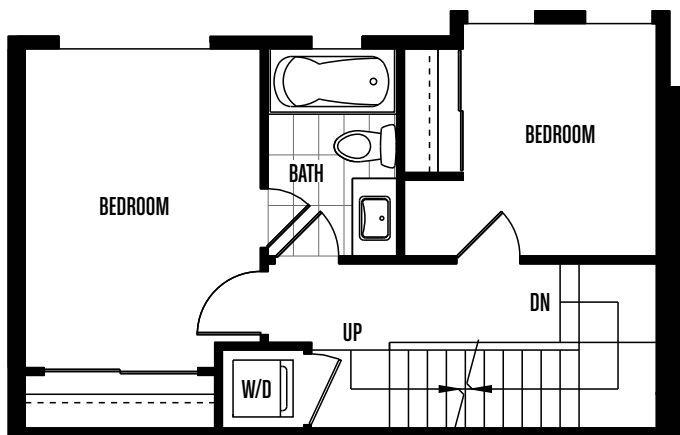
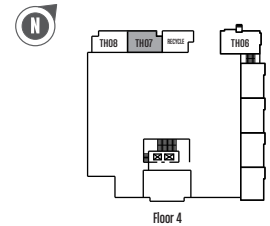
Northbank
NEW WESTMINSTER



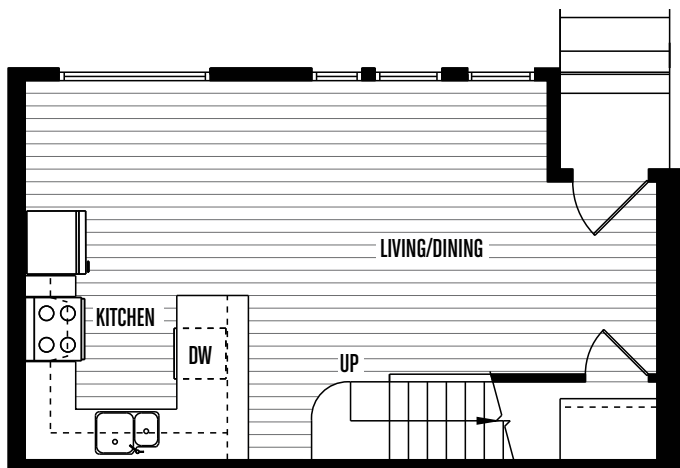
THIRD FLOOR

PLAN TH07

3 BEDROOM, 2 BATHROOM
1,330 SQ.FT.



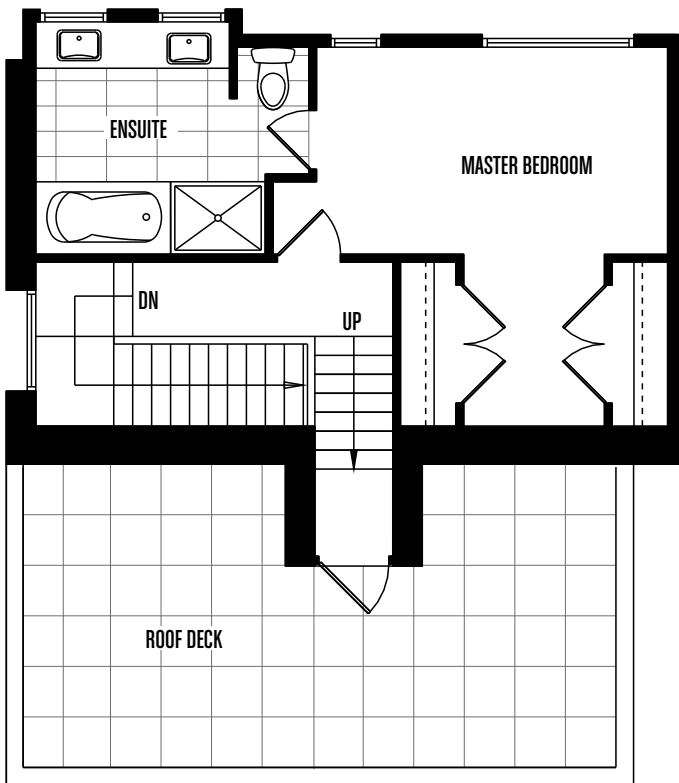
SECOND FLOOR



MAIN FLOOR



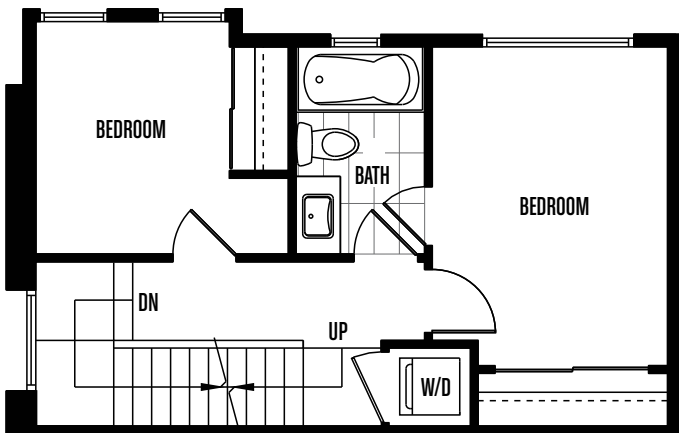
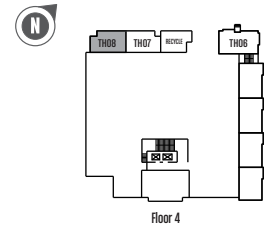
Northbank
NEW WESTMINSTER



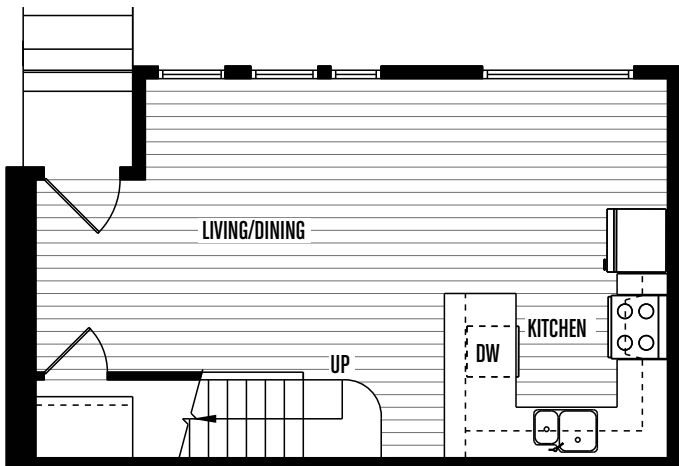
THIRD FLOOR

PLAN TH08

3 BEDROOM, 2 BATHROOM
1,333 SQ.FT.



SECOND FLOOR



MAIN FLOOR



FEATURES

KITCHENS

- Cosentino Silestone quartz countertops with breakfast bar
- Sleek, contemporary laminate soft-close cabinets with full height uppers
- Kohler "Simplice" 1 piece pull chrome faucet with spray
- Ample pantry storage with 4 roll-out drawers
- Undermount stainless steel double sink
- 1/3 hp, heavy duty galvanized steel in-sink disposal
- Under cabinet puck lighting
- Full-height, 16"x4" ceramic tile backsplash
- Recessed pot lighting
- Under sink roll-out recycle bin
- Additional base cabinet accessible from dining area

APPLIANCES

- Samsung counter-depth French door refrigerator with ice maker
- KitchenAid self cleaning 30" glass top convection range oven
- KitchenAid dishwasher with stainless steel interior
- Built-in stainless steel Panasonic microwave
- Broan Slimline 300 cfm hood fan
- Whirlpool Duet full-size front loading washer and dryer

LIVING

- Two stylish colour schemes
- European wide plank laminate flooring by Kraus in living areas
- 26oz stain resistant, textured loop carpet in all bedrooms

BATHROOMS

- Cosentino Eco composite countertop
- White, high-gloss laminate vanity
- Acri-tec undermount rectangular basin
- Kohler "Singular" one piece chrome faucet
- Kohler "Sterling" toilet with elongated bowl and soft-close seat
- Hystar bathtub with sloping back rest and integrated armrests
- 20"x8" gloss finish, ceramic tile bathtub surround
- Kohler "Singular" chrome bath and shower trim kit
- Large format 12" x 24" porcelain tile flooring