

# Will

—

## Plan A

3 Bedroom, 2 Bathroom,  
Powder Room.

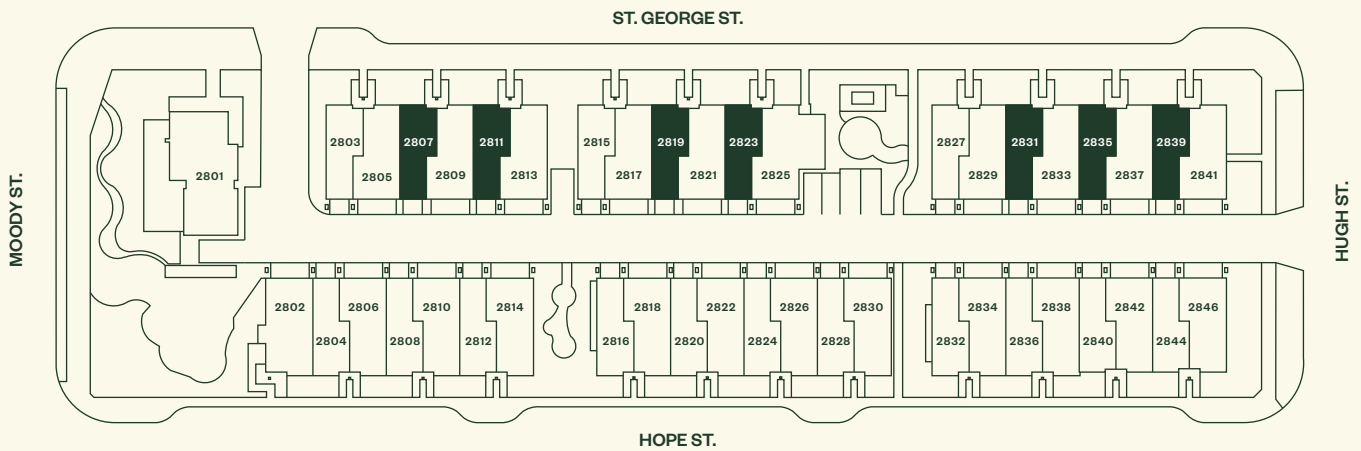
—

Port Moody

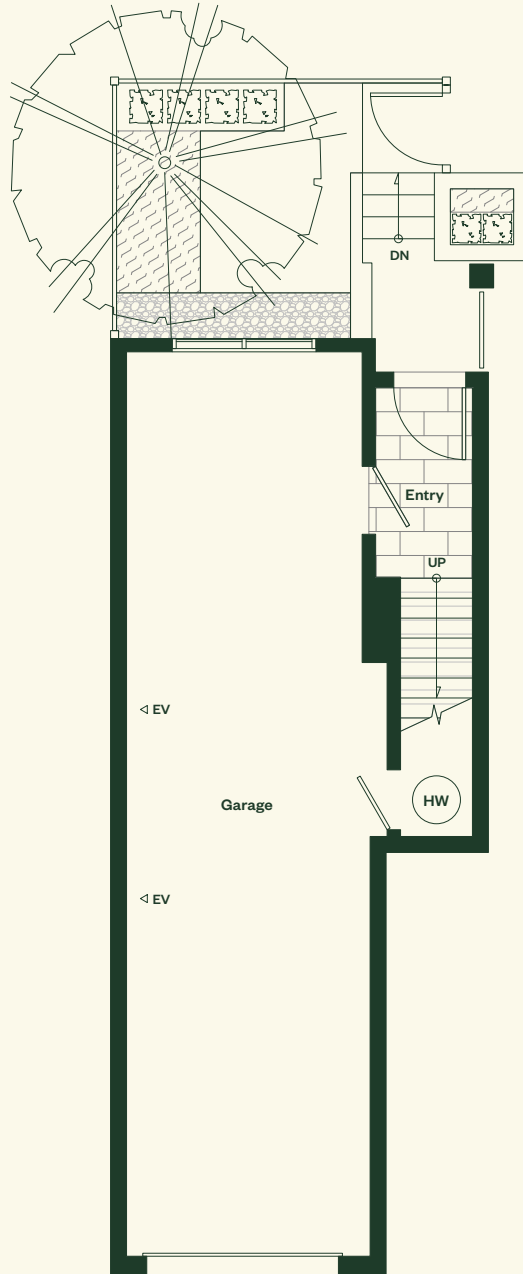
# Plan A

3 Bedroom  
2 Bathroom  
Powder Room

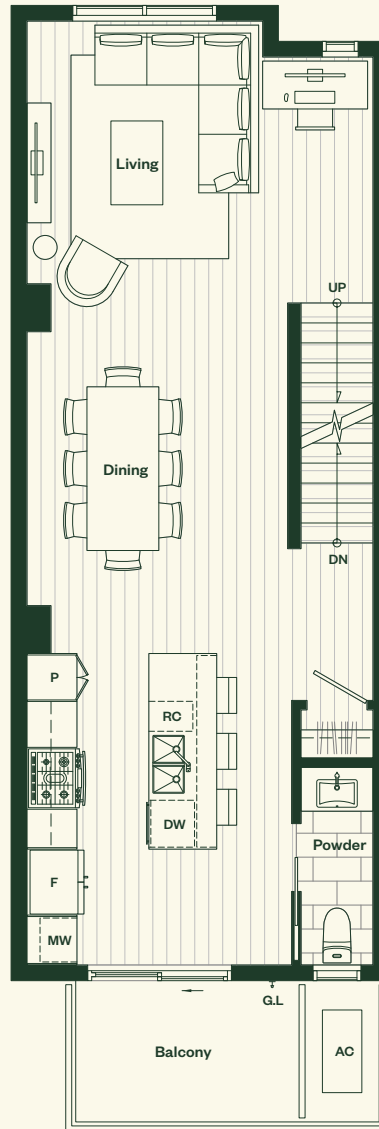
Total Living: 1,358 sf  
Interior: 1,302 sf  
Exterior: 56 sf



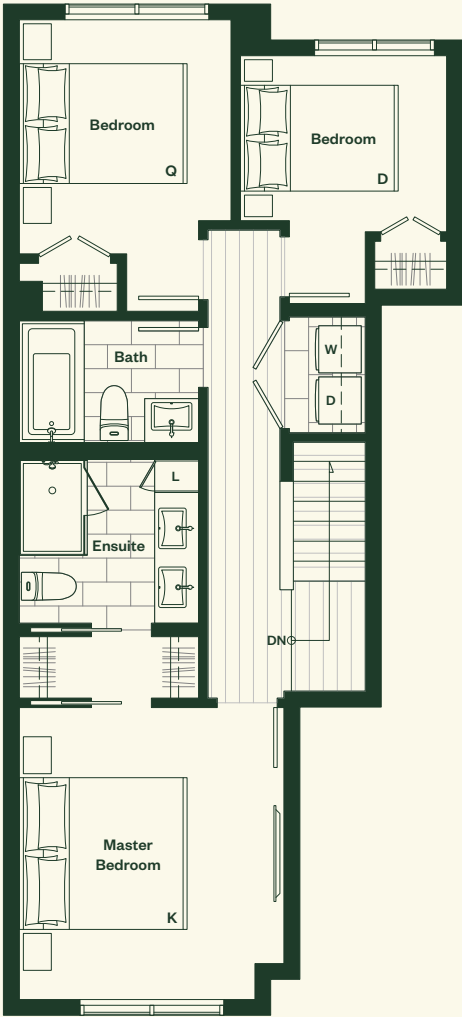
# Lower Level



# Main Level



# Upper Level



# Will

—

## Plan A1

3 Bedroom, 2 Bathroom,  
Powder Room.

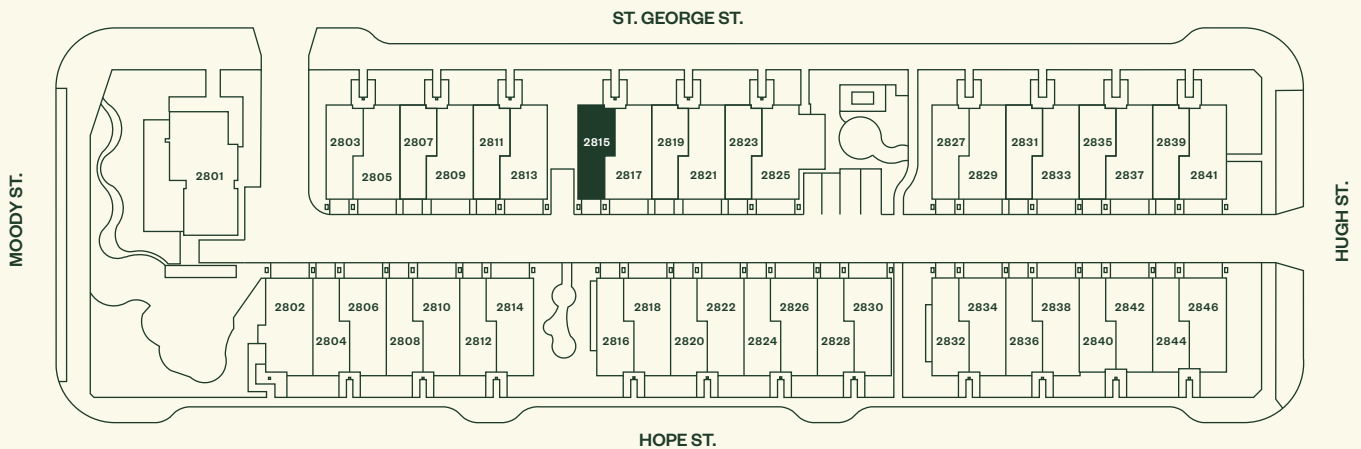
—

Port Moody

# Plan A1

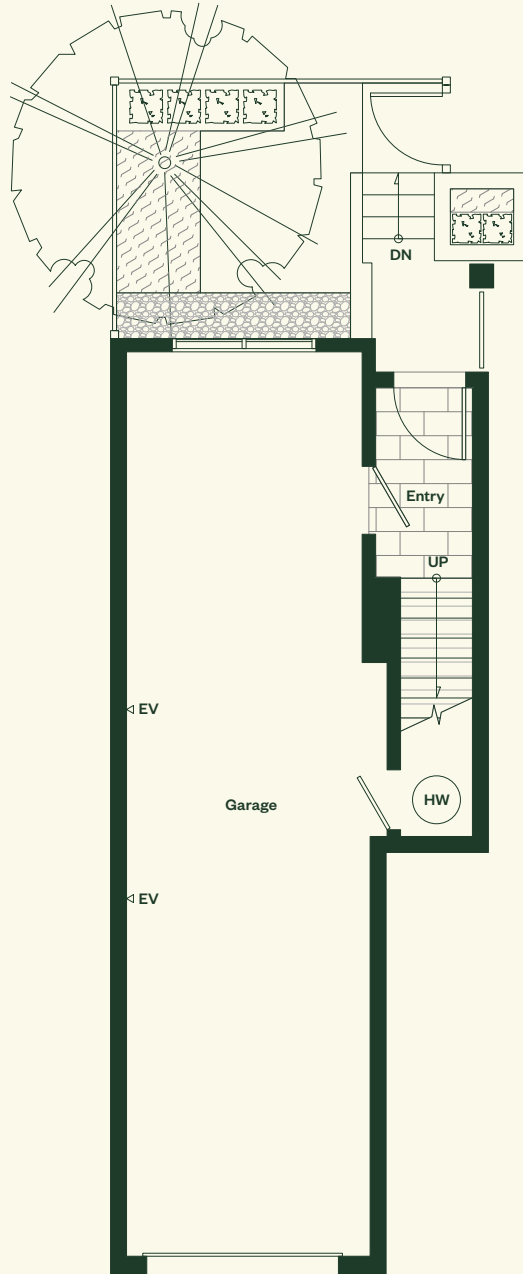
3 Bedroom  
2 Bathroom  
Powder Room

Total Living: 1,387 sf  
Interior: 1,313 sf  
Exterior: 74 sf



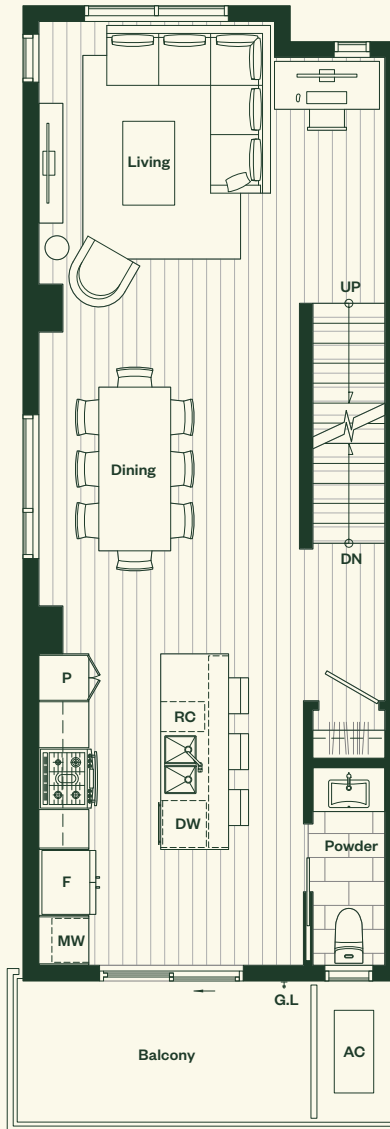
The Developer reserves the right in its sole discretion to make modifications or changes to building design, floor plans, project designs, specifications, finishes, features, and dimensions, without prior notice. Square footages are approximate and have been calculated from architectural drawings. Actual final dimensions following completion of construction may vary from those set out herein. E.&O.E. Marcon Johnston (GP) Ltd.

# Lower Level

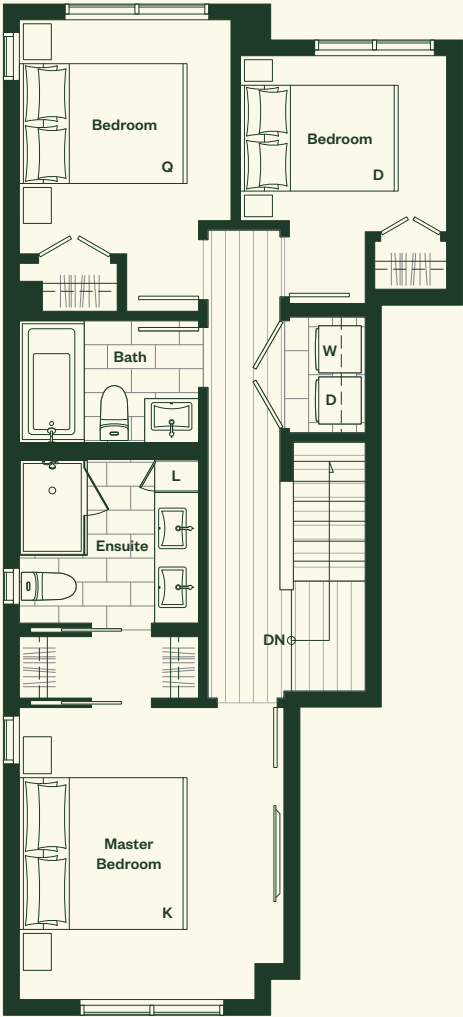




# Main Level



# Upper Level



# Will



## Plan A2

3 Bedroom, 2 Bathroom,  
Powder Room.

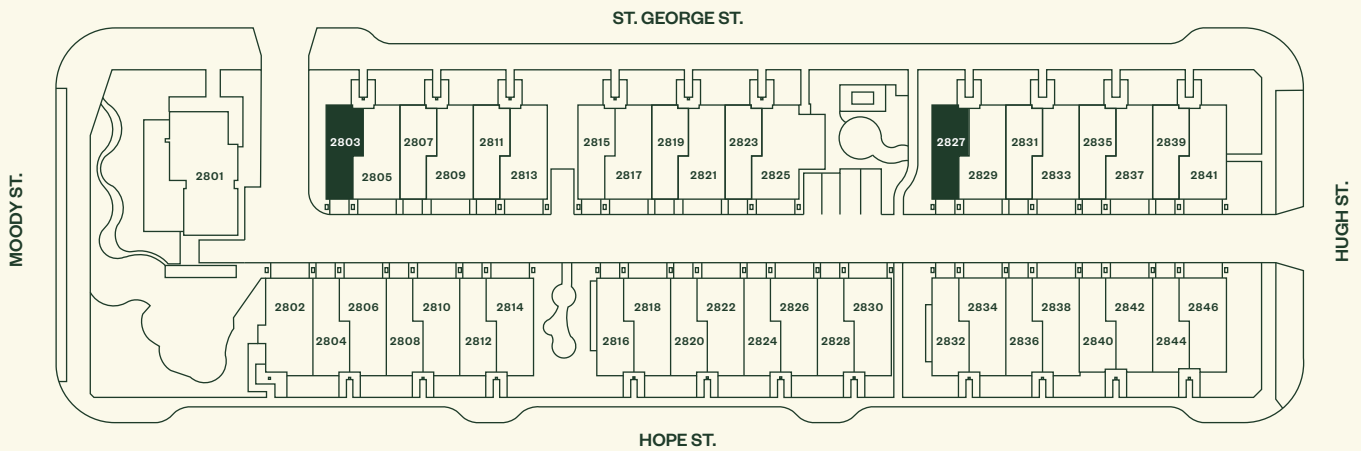


Port Moody

# Plan A2

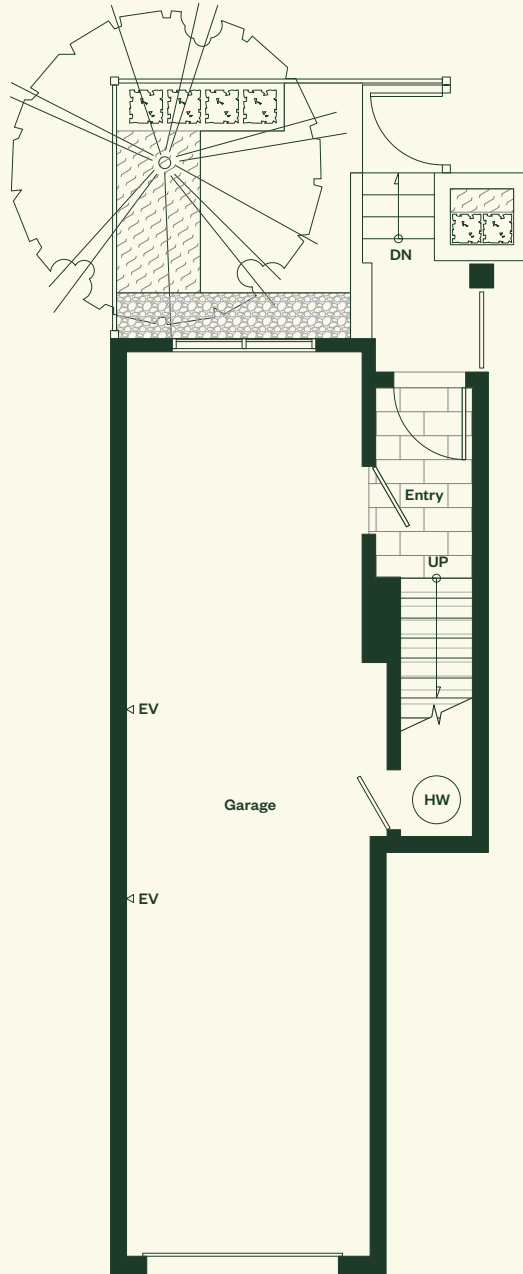
3 Bedroom  
2 Bathroom  
Powder Room

Total Living: 1,409 sf  
Interior: 1,335 sf  
Exterior: 74 sf

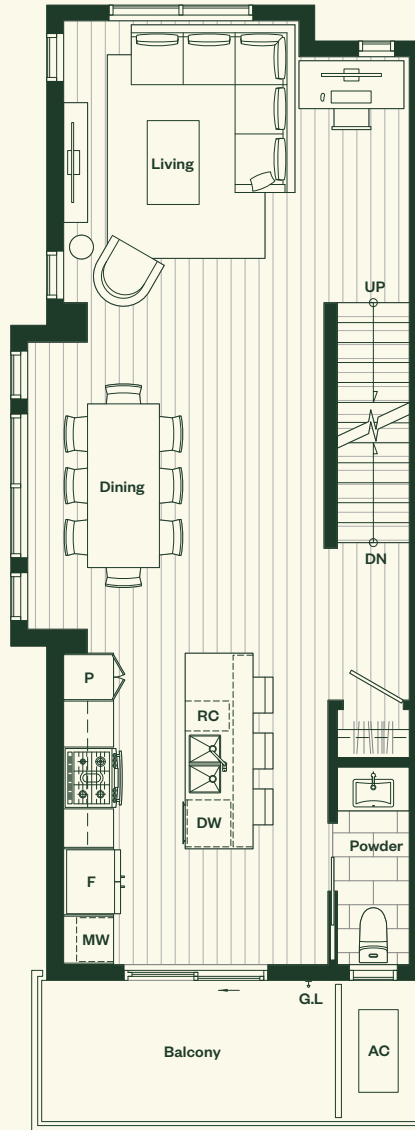


The Developer reserves the right in its sole discretion to make modifications or changes to building design, floor plans, project designs, specifications, finishes, features, and dimensions, without prior notice. Square footages are approximate and have been calculated from architectural drawings. Actual final dimensions following completion of construction may vary from those set out herein. E.&O.E. Marcon Johnston (GP) Ltd.

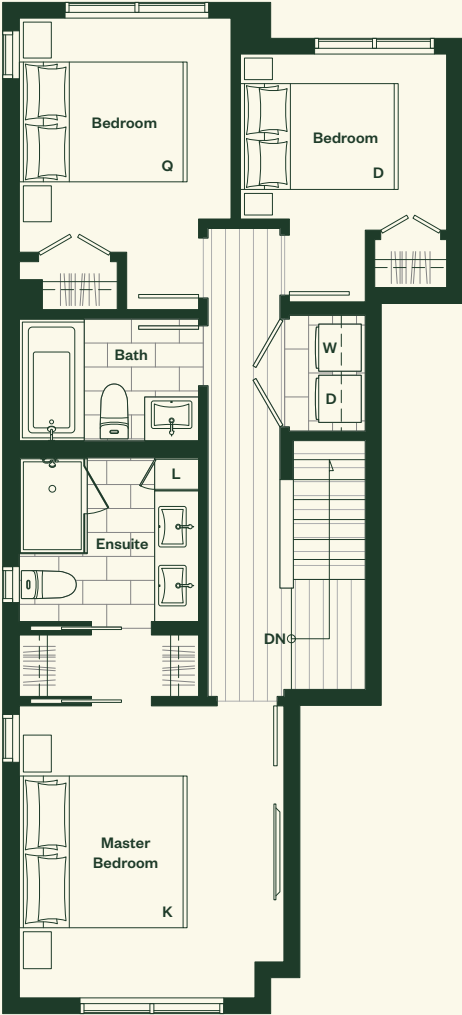
# Lower Level



# Main Level



# Upper Level



# Will

—

## Plan B

4 Bedroom, 3 Bathroom,  
Powder Room.

—

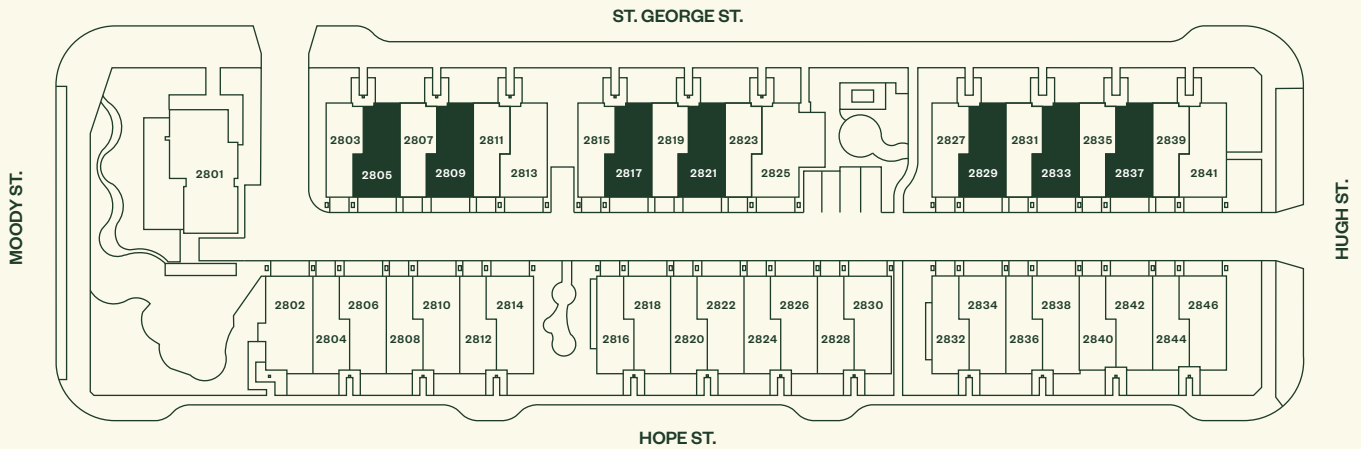
Port Moody



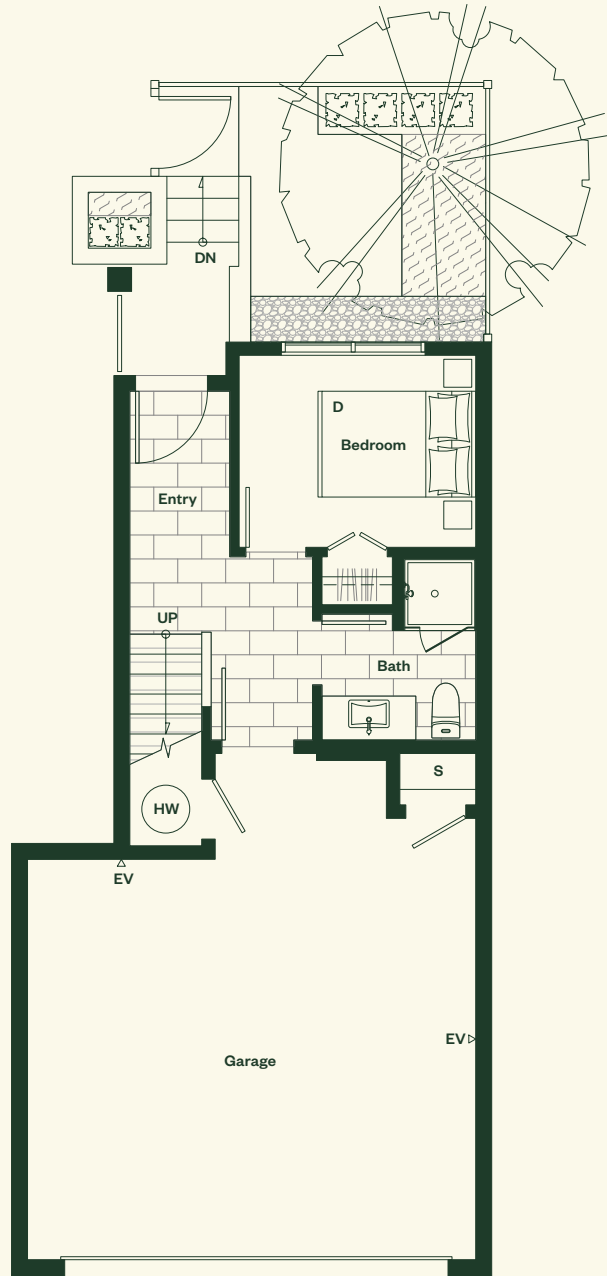
# Plan B

4 Bedroom  
3 Bathroom  
Powder Room

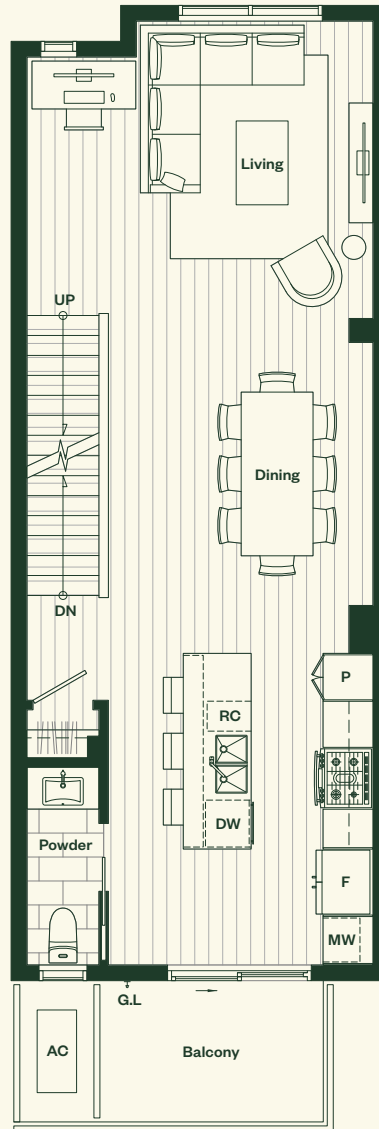
Total Living: 1,541 sf  
Interior: 1,485 sf  
Exterior: 56 sf



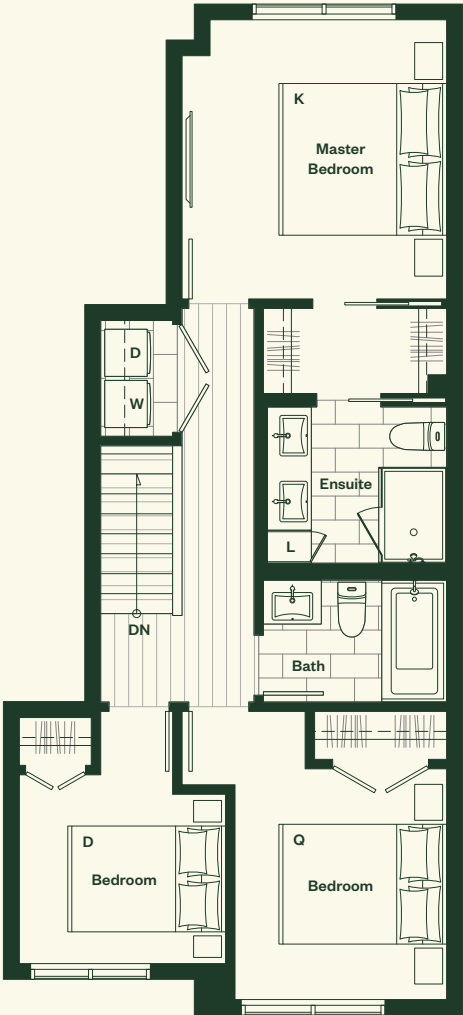
# Lower Level



# Main Level



# Upper Level



# Will



## Plan B2

4 Bedroom, 3 Bathroom,  
Powder Room.

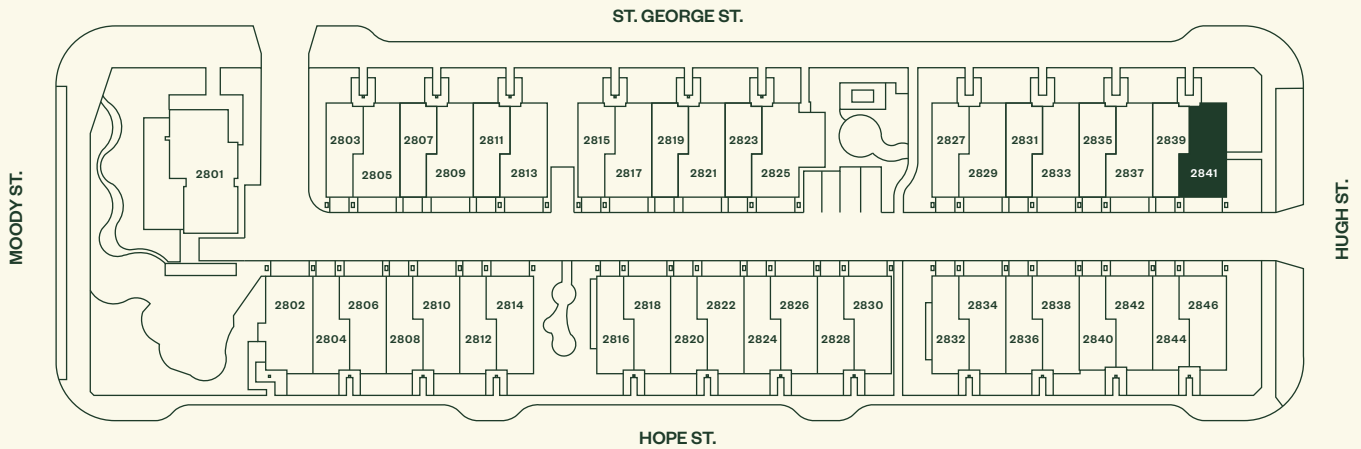


Port Moody

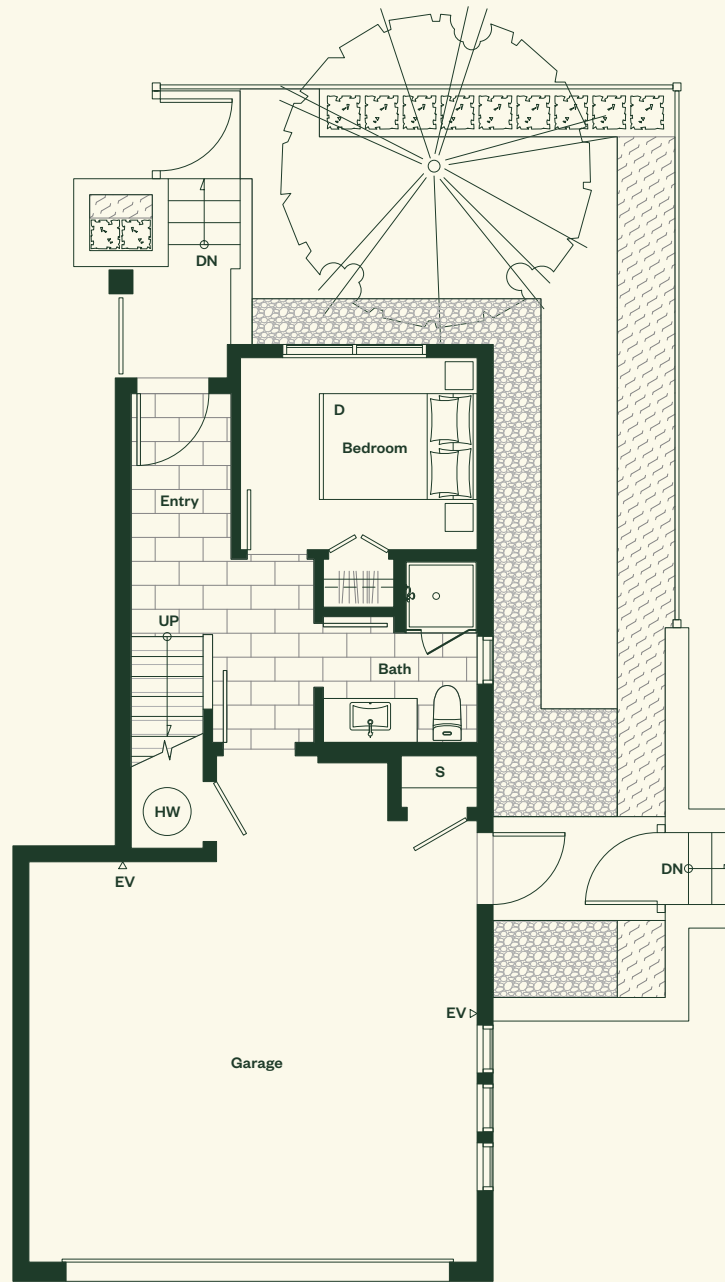
# Plan B2

4 Bedroom  
3 Bathroom  
Powder Room

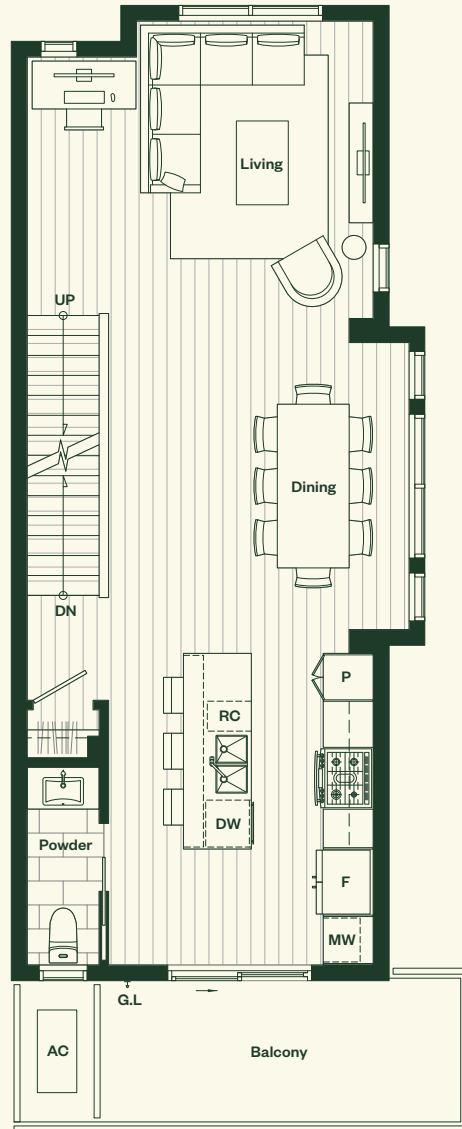
Total Living: 1,619 sf  
Interior: 1,528 sf  
Exterior: 91 sf



# Lower Level

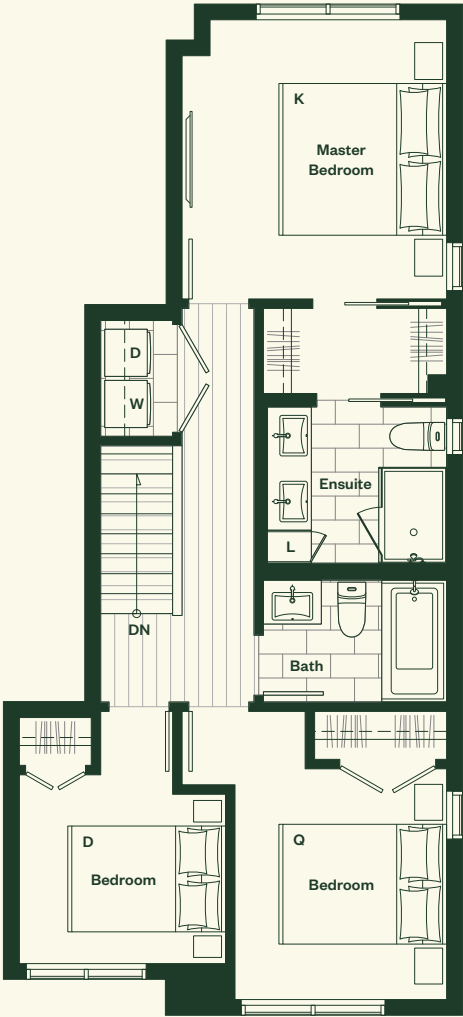


# Main Level





# Upper Level



# Will

—

## Plan C

3 Bedroom, 2 Bathroom,  
Powder Room.

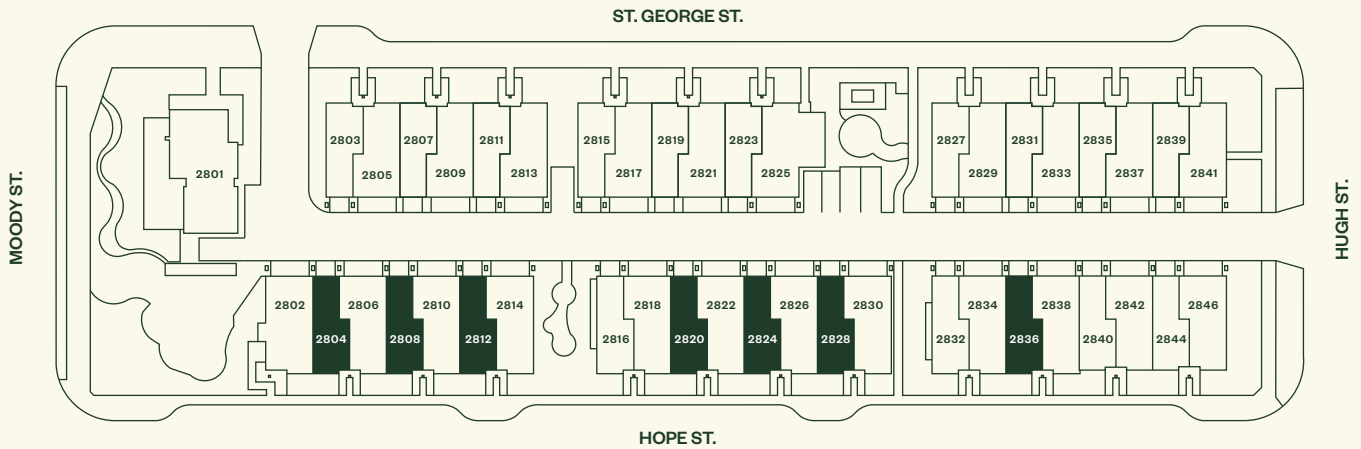
—

Port Moody

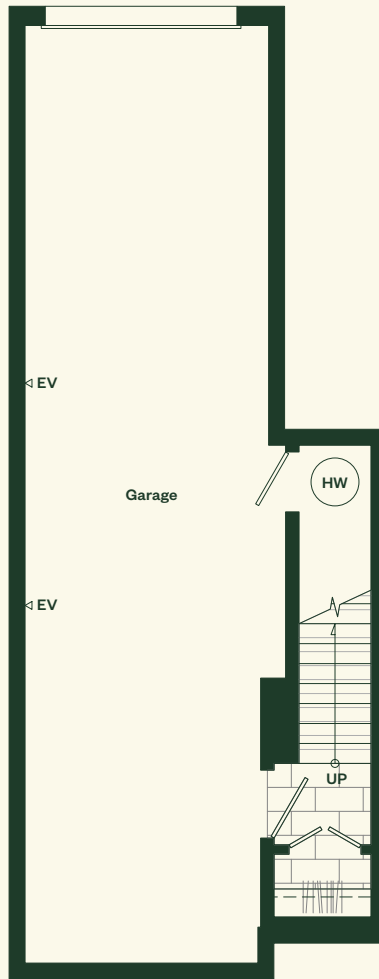
# Plan C

3 Bedroom  
2 Bathroom  
Powder Room

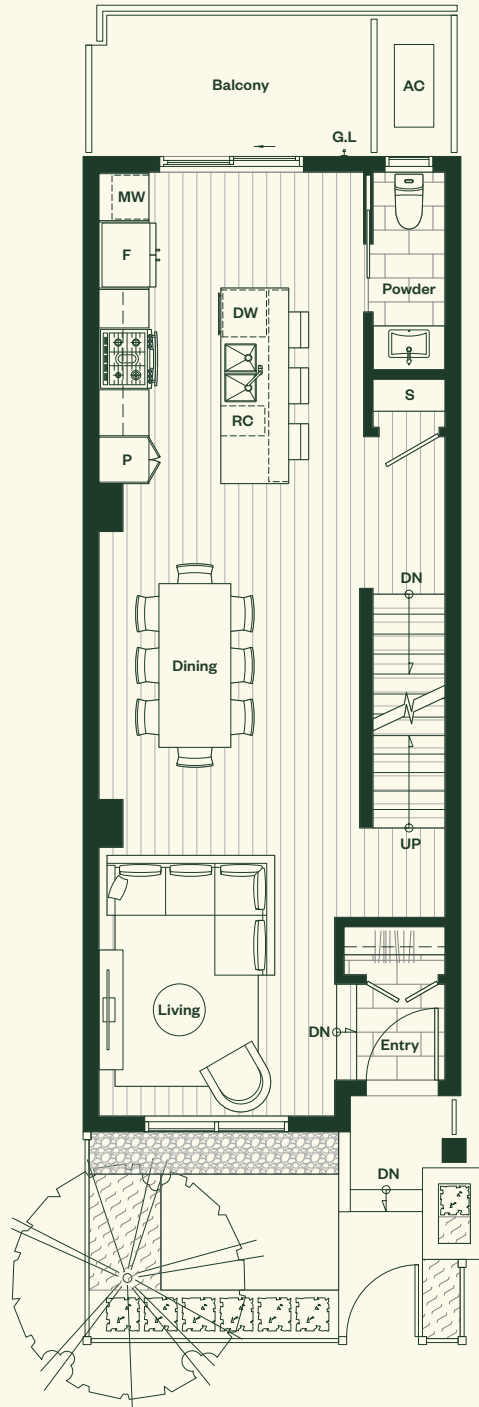
Total Living: 1,371 sf  
Interior: 1,302 sf  
Exterior: 69 sf



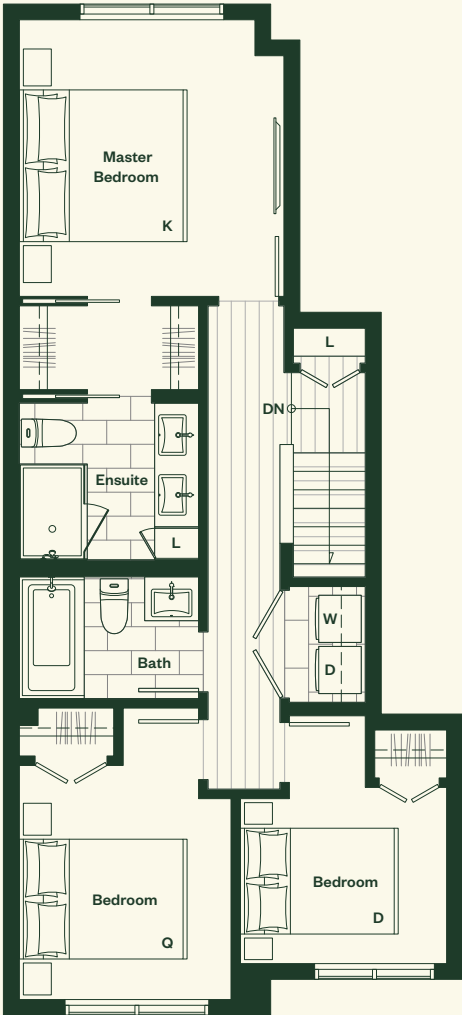
# Lower Level



# Main Level



# Upper Level



# Will

—

## Plan C1

3 Bedroom, 2 Bathroom,  
Powder Room.

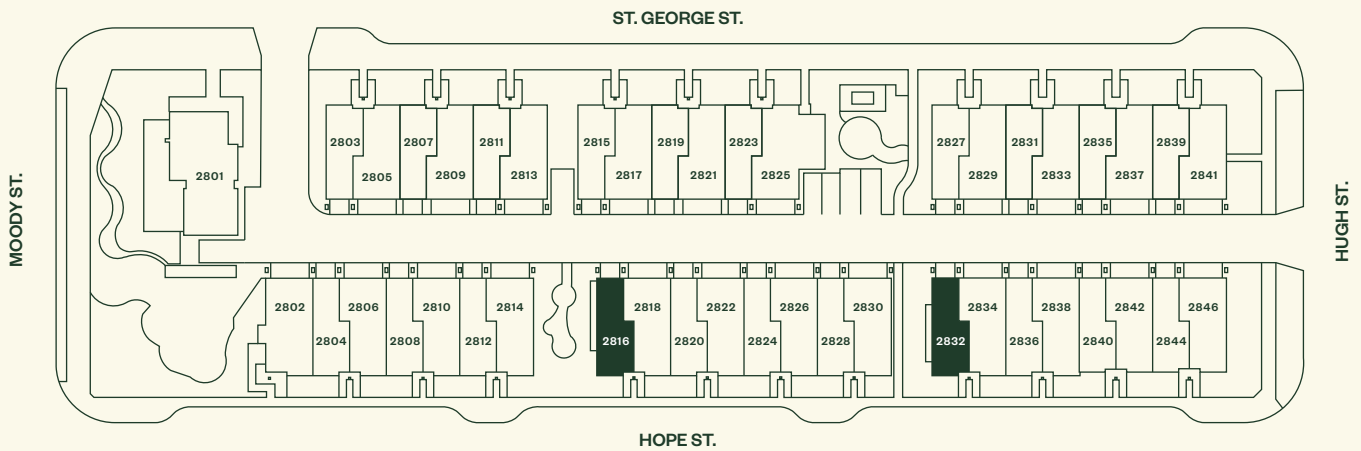
—

Port Moody

# Plan C1

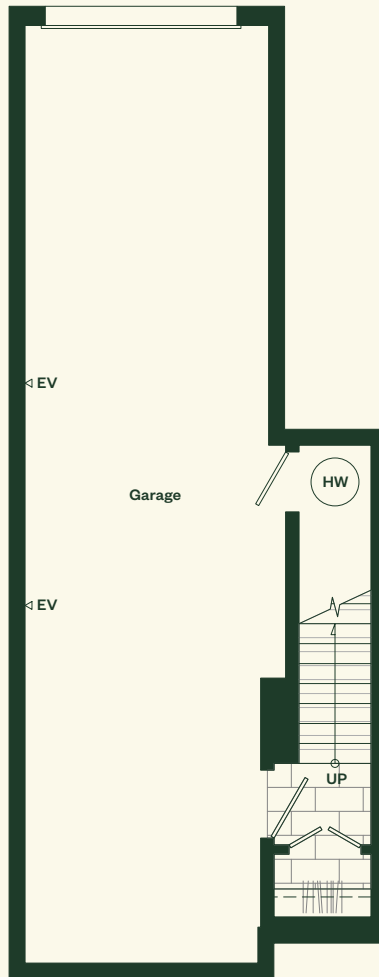
3 Bedroom  
2 Bathroom  
Powder Room

Total Living: 1,398 sf  
Interior: 1,324 sf  
Exterior: 74 sf

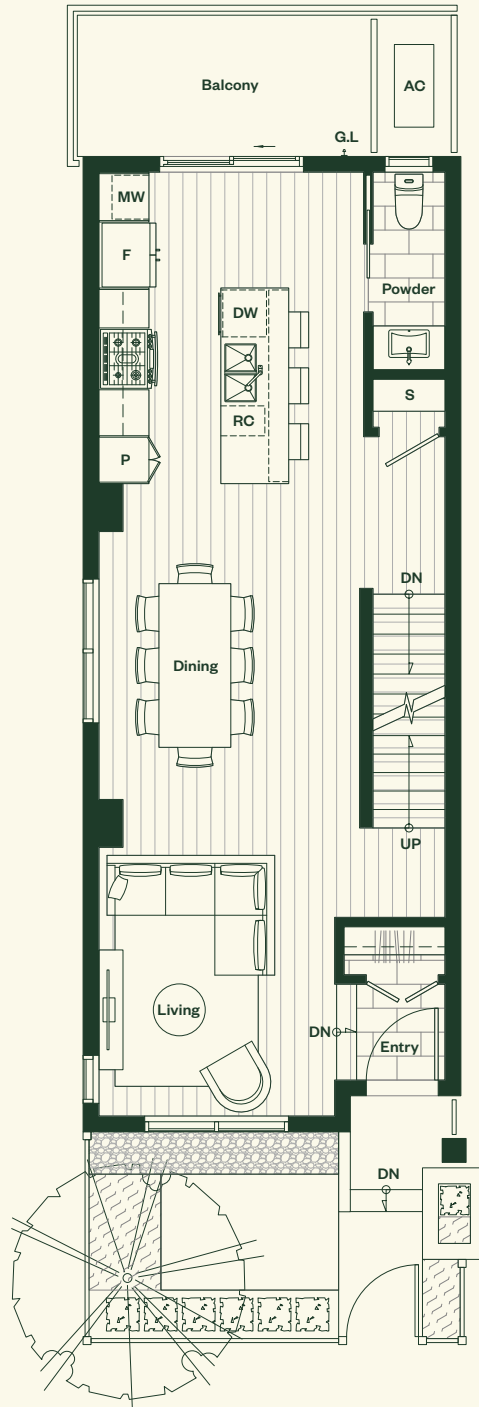




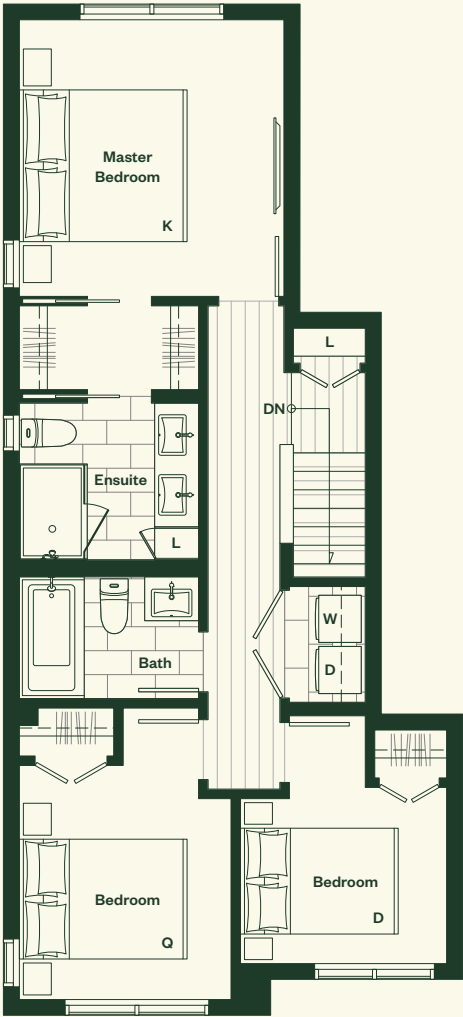
# Lower Level



# Main Level



# Upper Level



# Will



## Plan C2

3 Bedroom, 2 Bathroom,  
Powder Room.

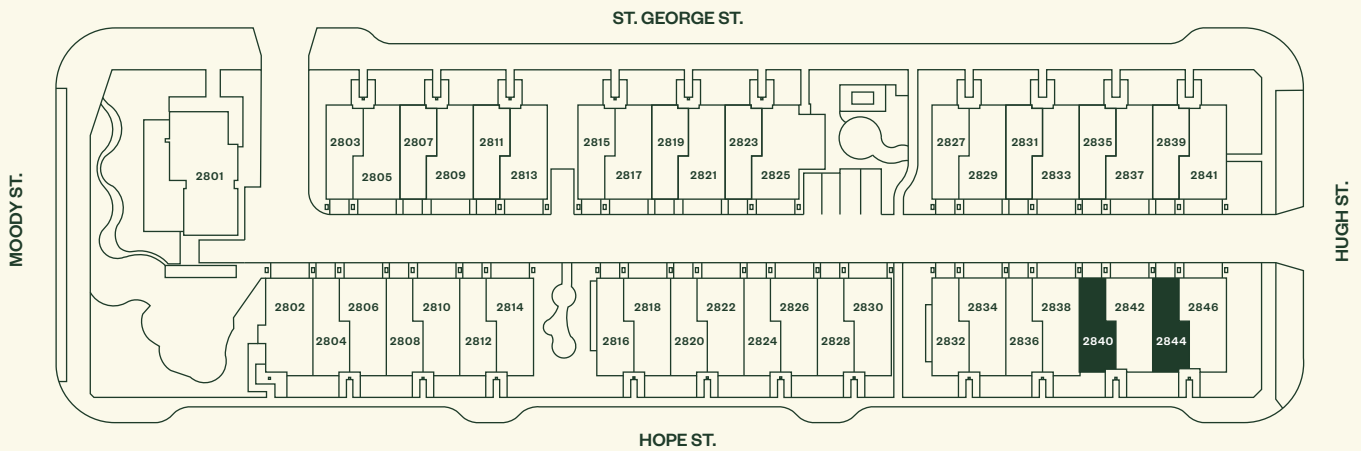


Port Moody

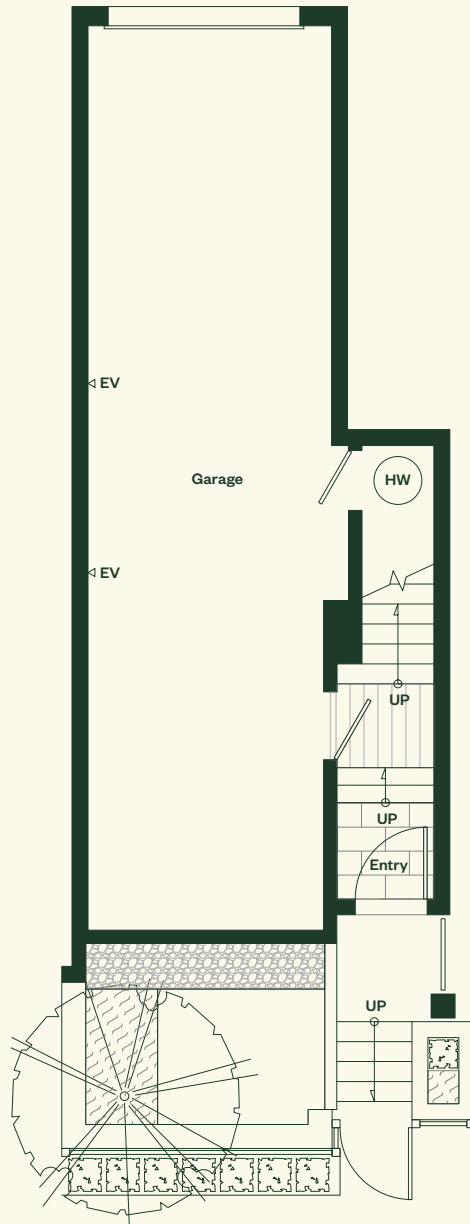
# Plan C2

3 Bedroom  
2 Bathroom  
Powder Room

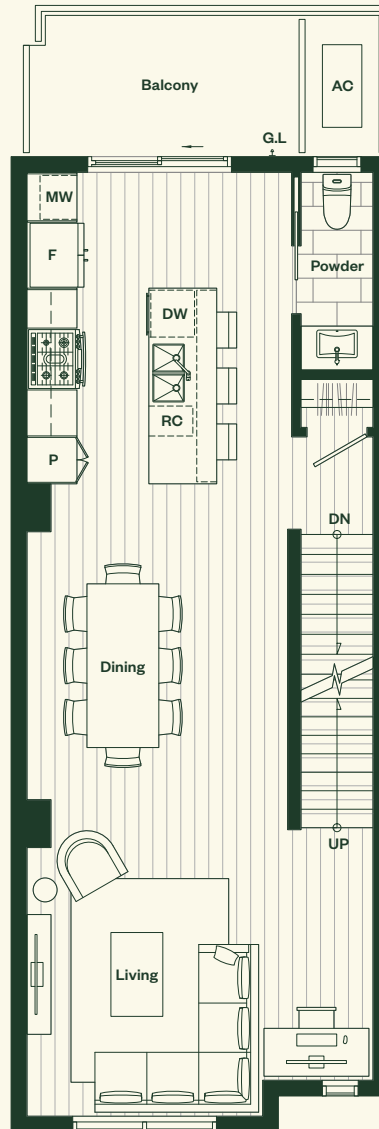
Total Living: 1,369 sf  
Interior: 1,302 sf  
Exterior: 67 sf



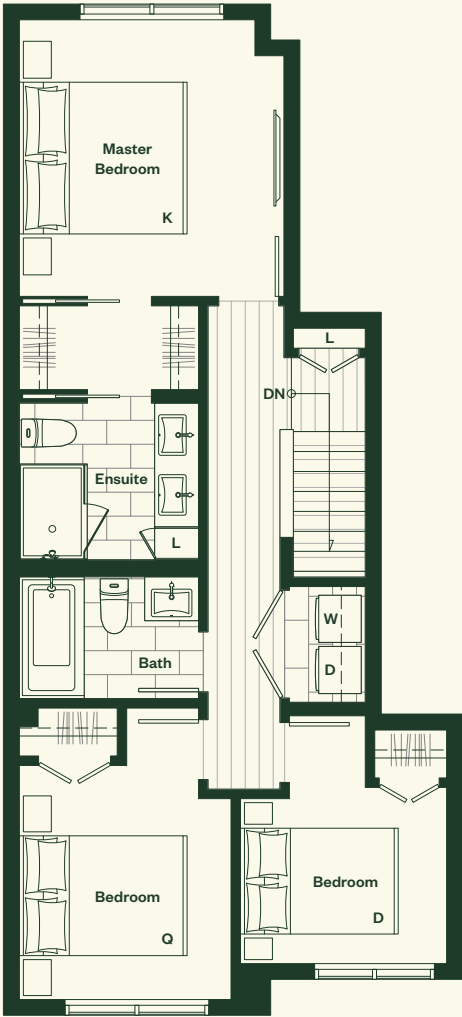
# Lower Level



# Main Level



# Upper Level





# Will

—

## Plan D

4 Bedroom, 3 Bathroom,  
Powder Room.

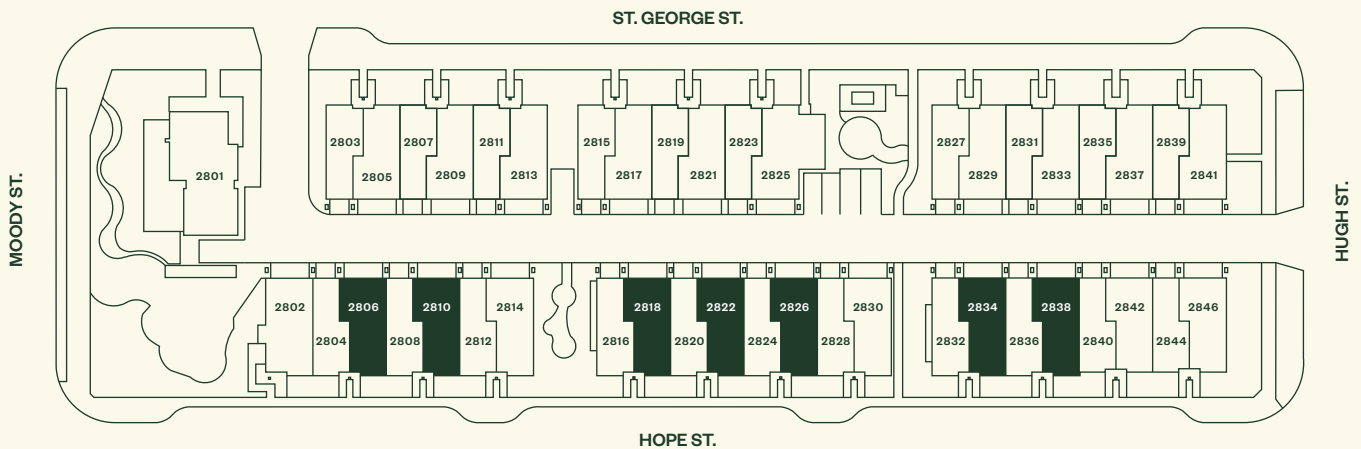
—

Port Moody

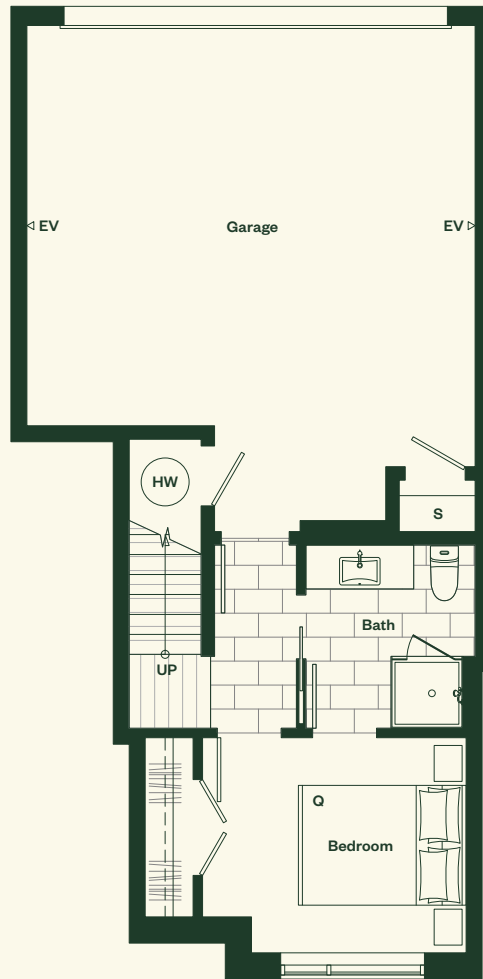
# Plan D

4 Bedroom  
3 Bathroom  
Powder Room

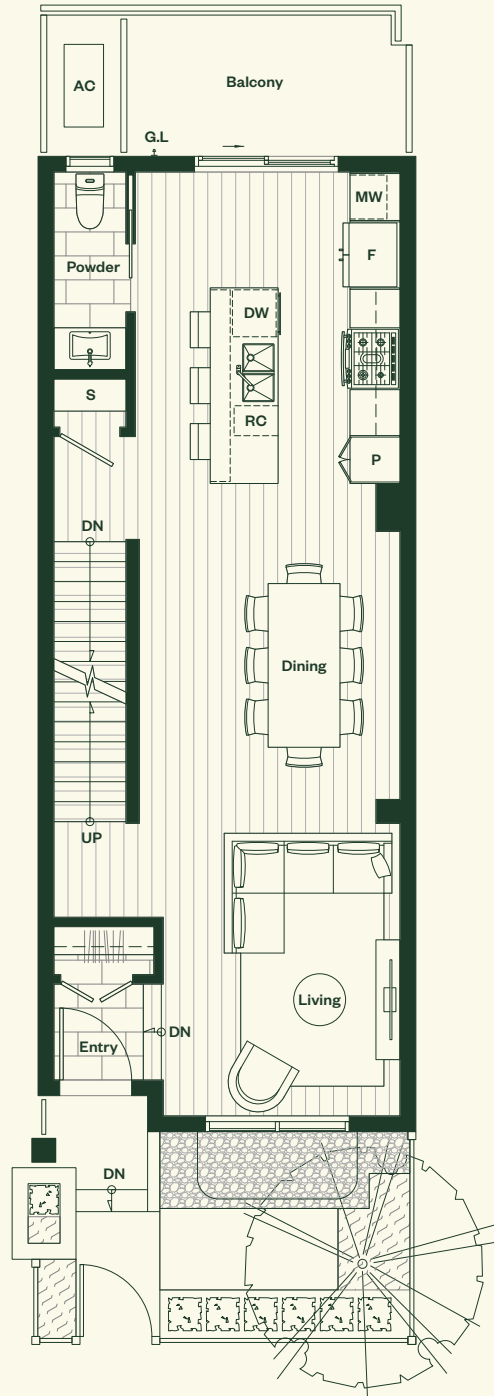
Total Living: 1,588 sf  
Interior: 1,518 sf  
Exterior: 70 sf



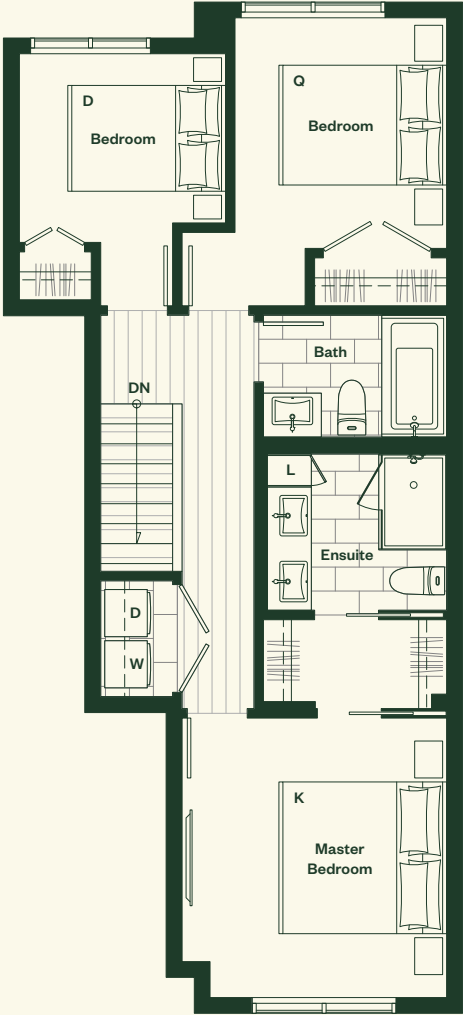
# Lower Level



# Main Level



# Upper Level



# Will



## Plan D1

4 Bedroom, 3 Bathroom,  
Powder Room.

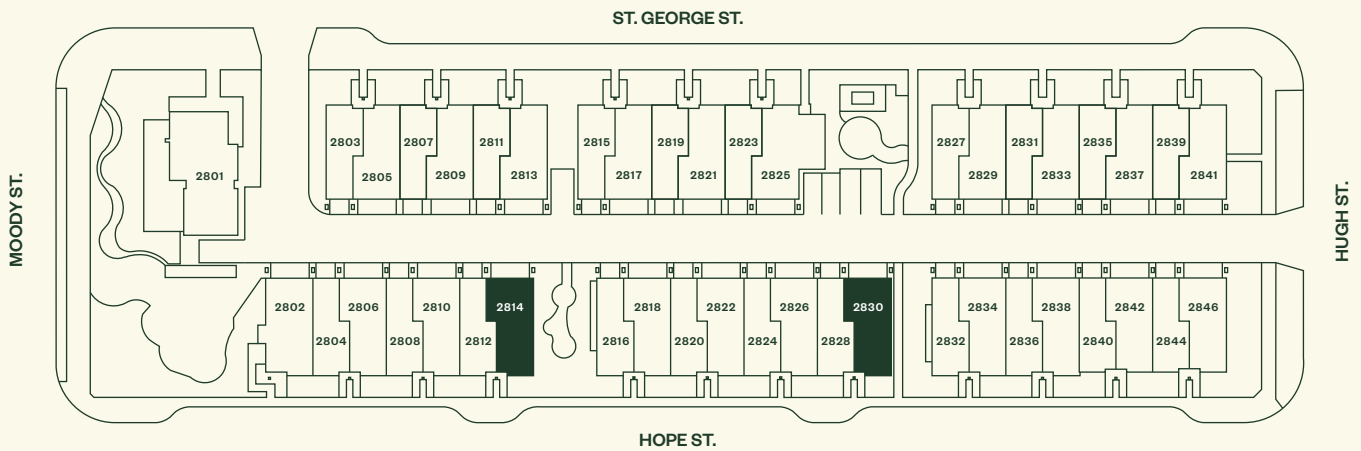


Port Moody

# Plan D1

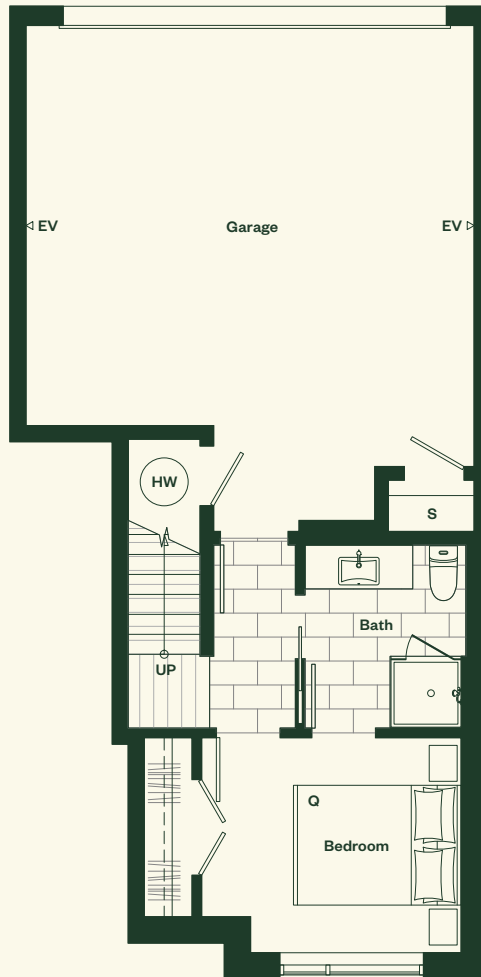
—  
4 Bedroom  
3 Bathroom  
Powder Room  
—

Total Living: 1,603 to 1,614 sf  
Interior: 1,528 to 1,539 sf  
Exterior: 75 sf



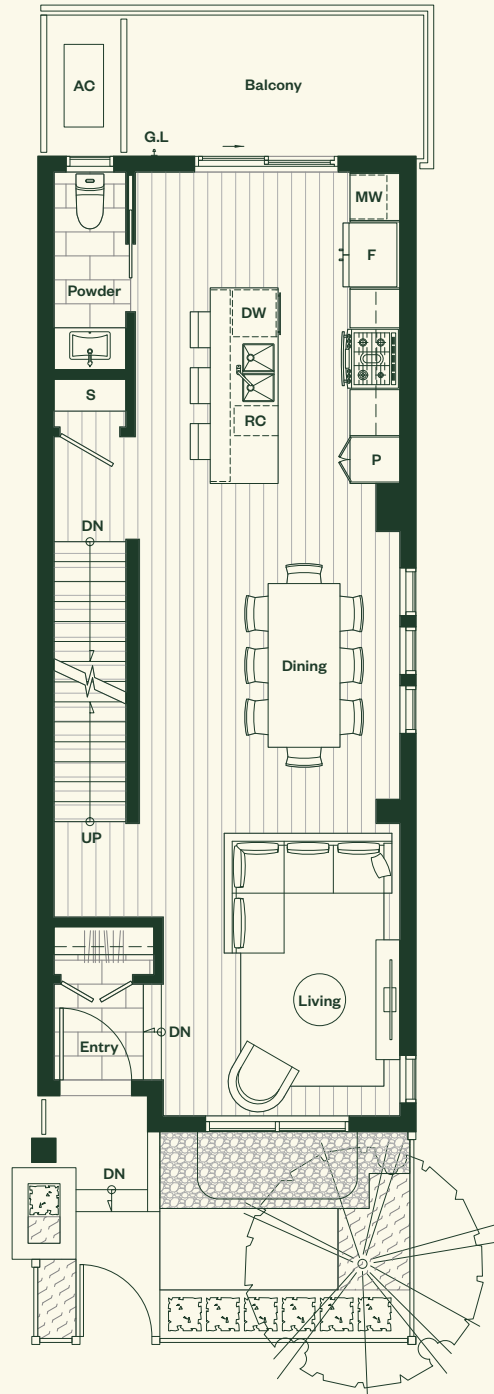
The Developer reserves the right in its sole discretion to make modifications or changes to building design, floor plans, project designs, specifications, finishes, features, and dimensions, without prior notice. Square footages are approximate and have been calculated from architectural drawings. Actual final dimensions following completion of construction may vary from those set out herein. E.&O.E. Marcon Johnston (GP) Ltd.

# Lower Level

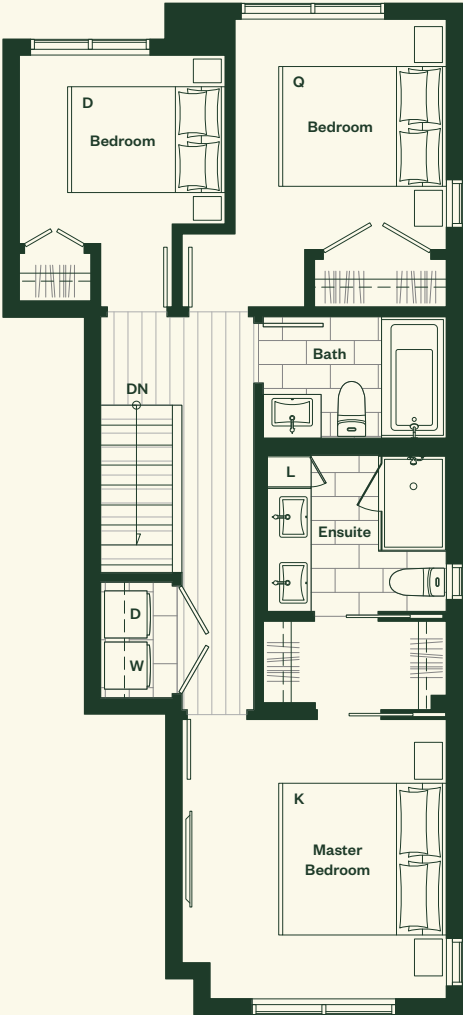




# Main Level



# Upper Level



# Will



## Plan D2

4 Bedroom, 3 Bathroom,  
Powder Room.

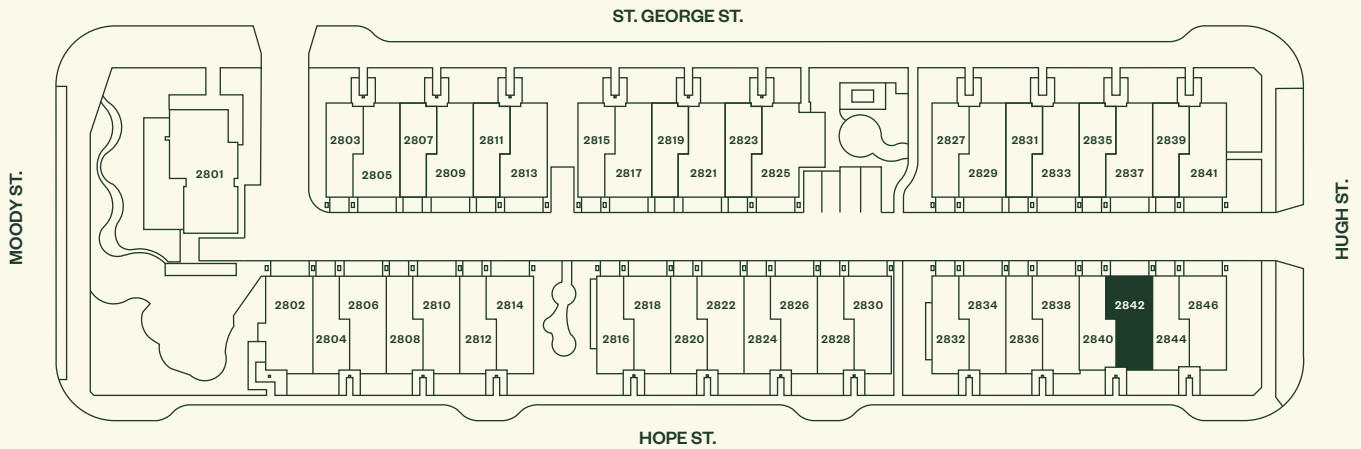


Port Moody

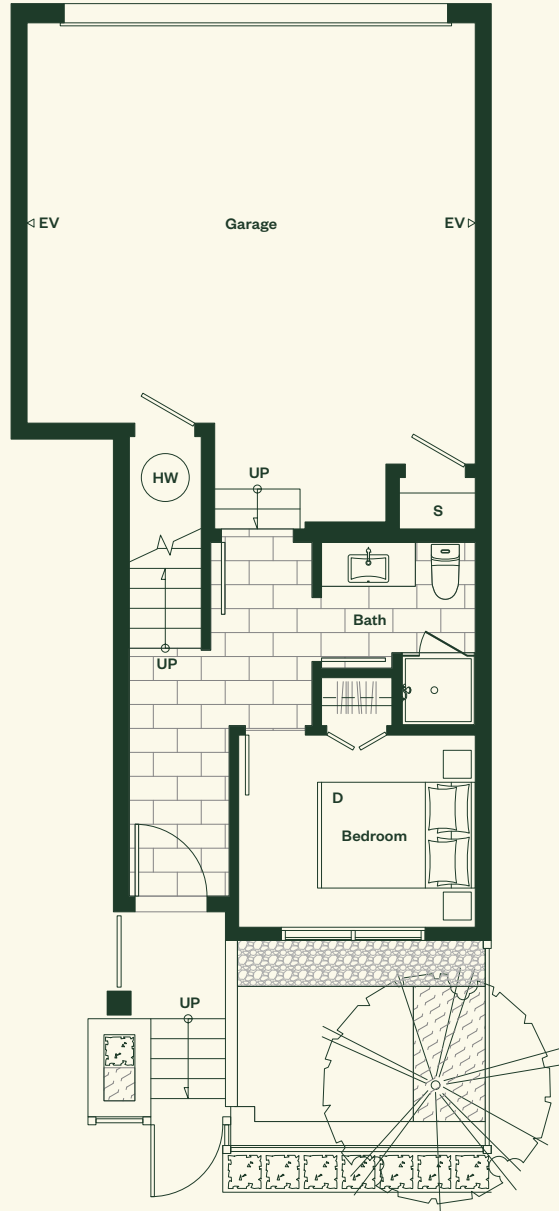
# Plan D2

—  
4 Bedroom  
3 Bathroom  
Powder Room  
—

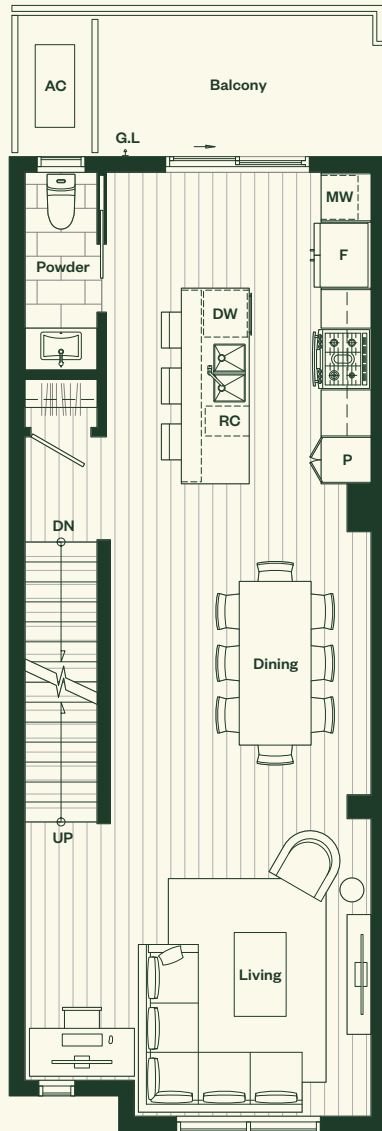
Total Living: 1,569 sf  
Interior: 1,496 sf  
Exterior: 73 sf



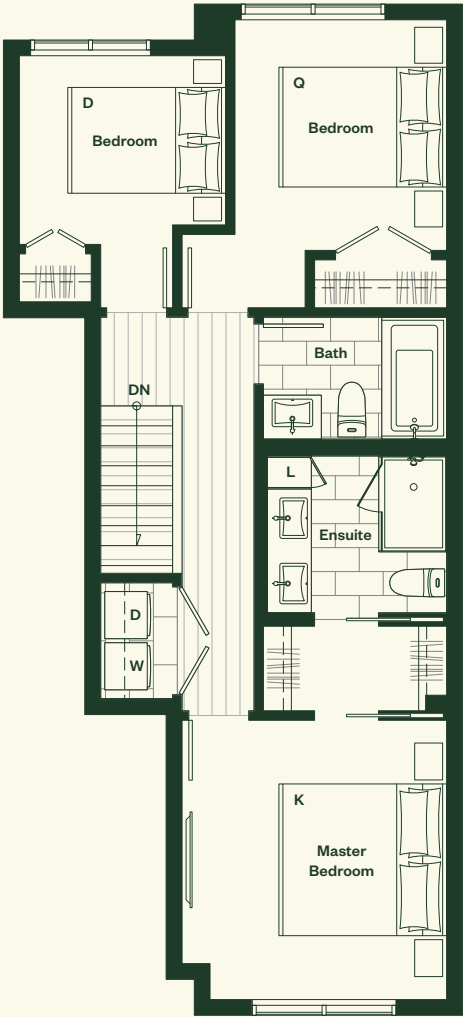
# Lower Level



# Main Level



# Upper Level



# Will



## Plan D3

4 Bedroom, 3 Bathroom,  
Powder Room.



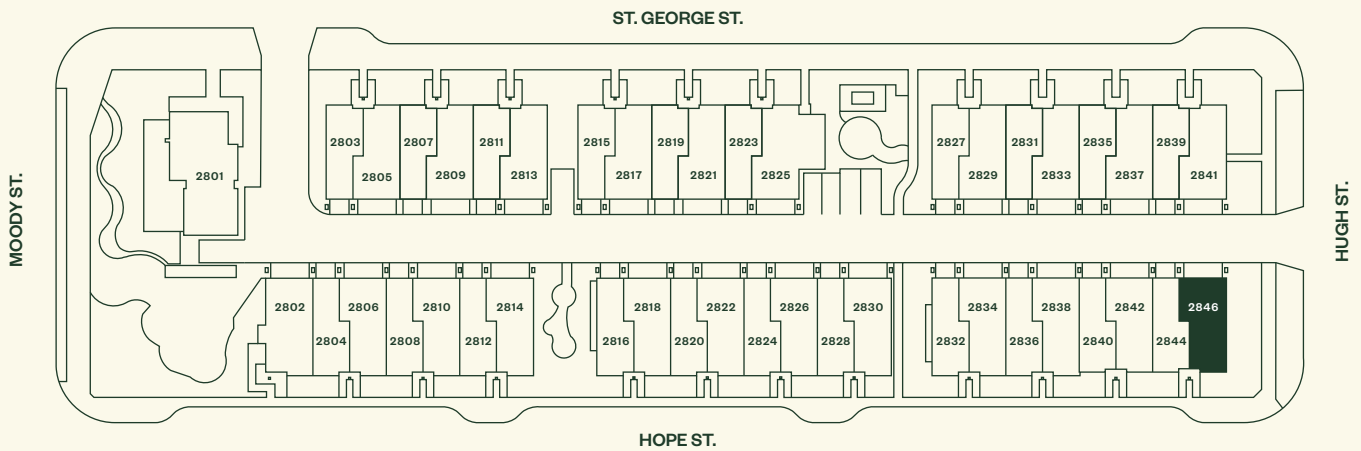
Port Moody



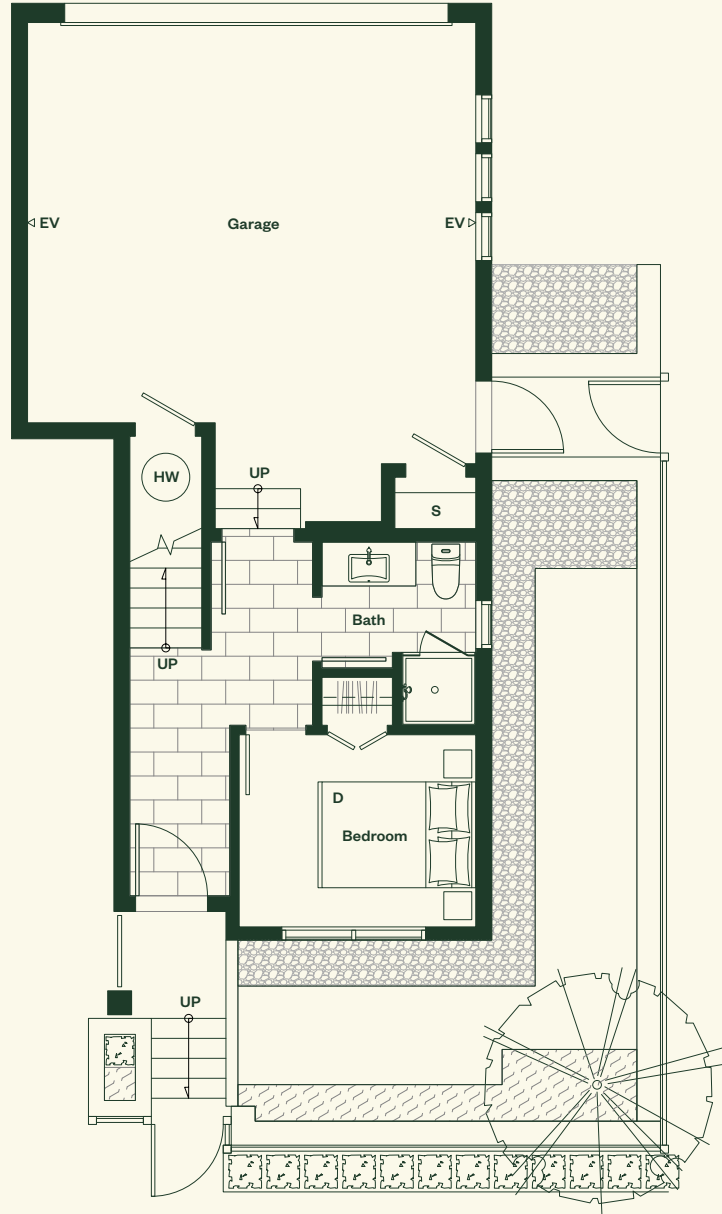
# Plan D3

4 Bedroom  
3 Bathroom  
Powder Room

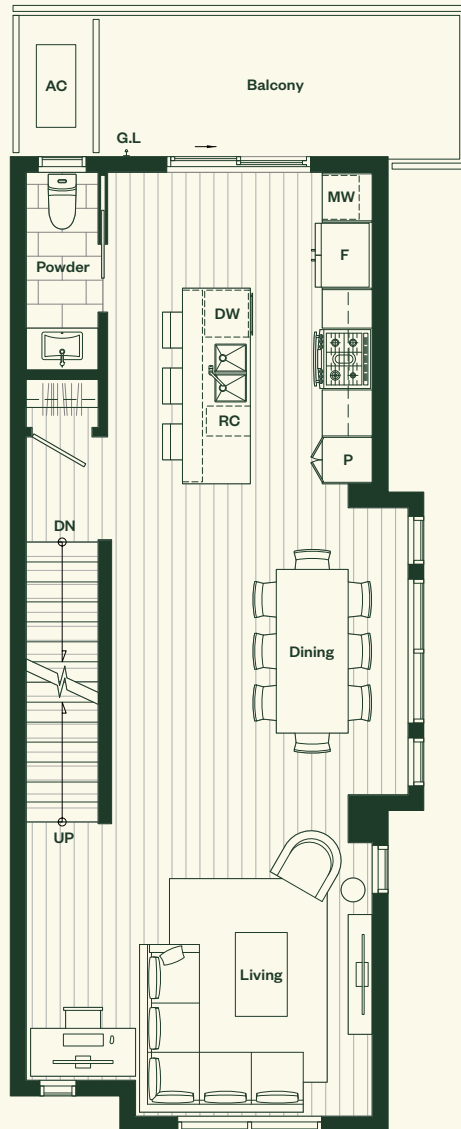
Total Living: 1,618 sf  
Interior: 1,528 sf  
Exterior: 90 sf



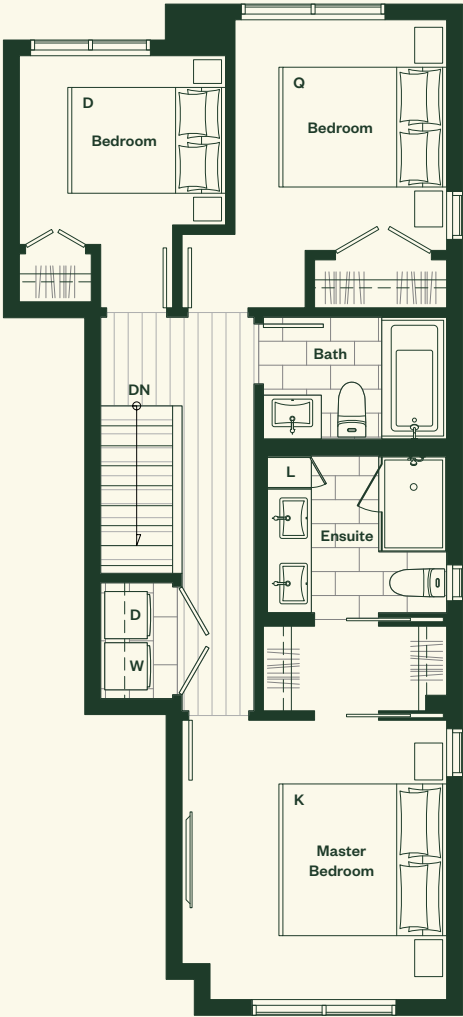
# Lower Level



# Main Level



# Upper Level



# Will

—

## Plan L

4 Bedroom & Lock Off Suite,  
3 Bathroom, Powder Room.

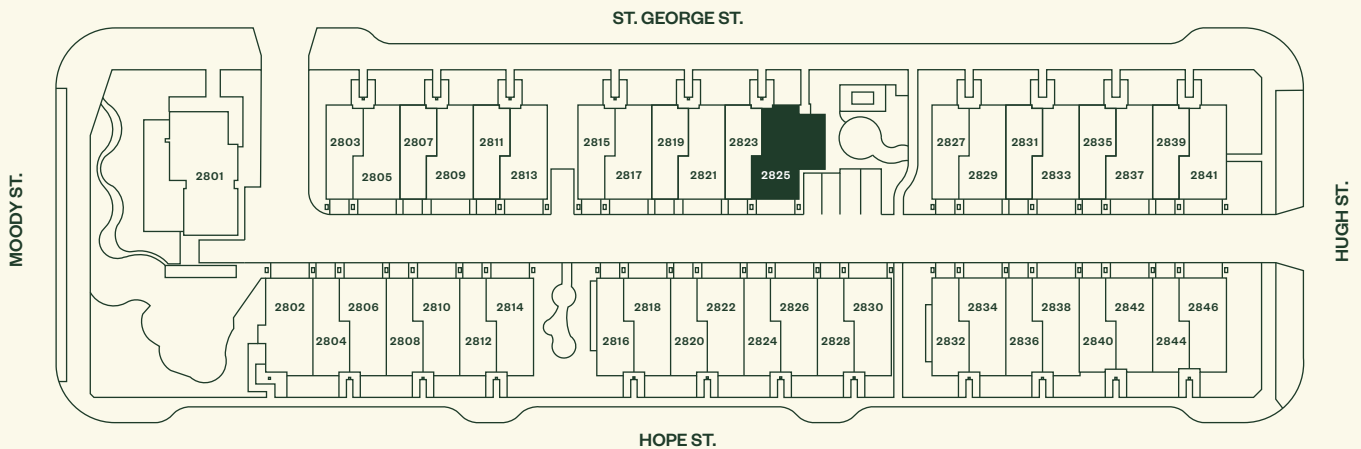
—

Port Moody

# Plan L

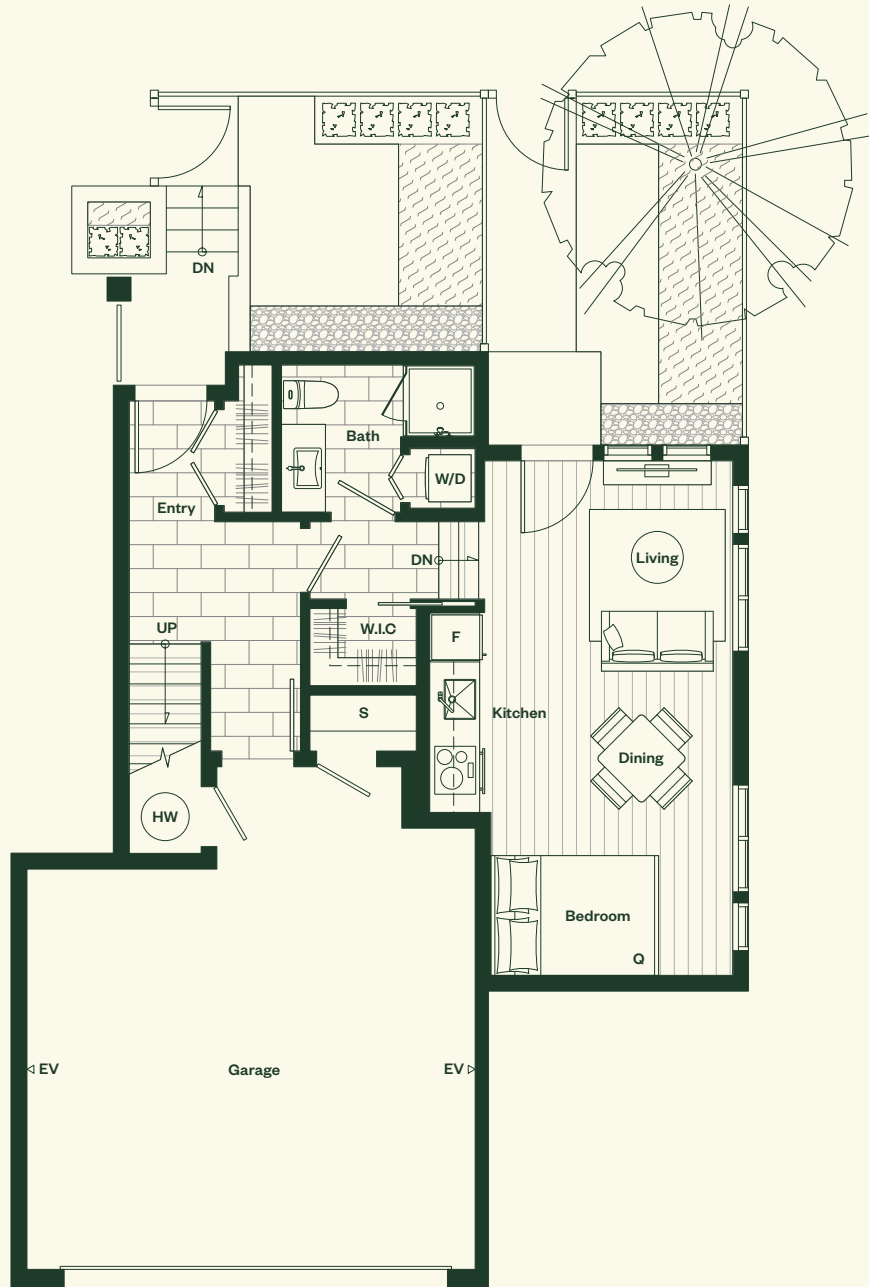
4 Bedroom & Lock Off Suite  
3 Bathroom  
Powder Room

Total Living: 2,051 sf  
Interior: 1,755 sf  
Exterior: 296 sf

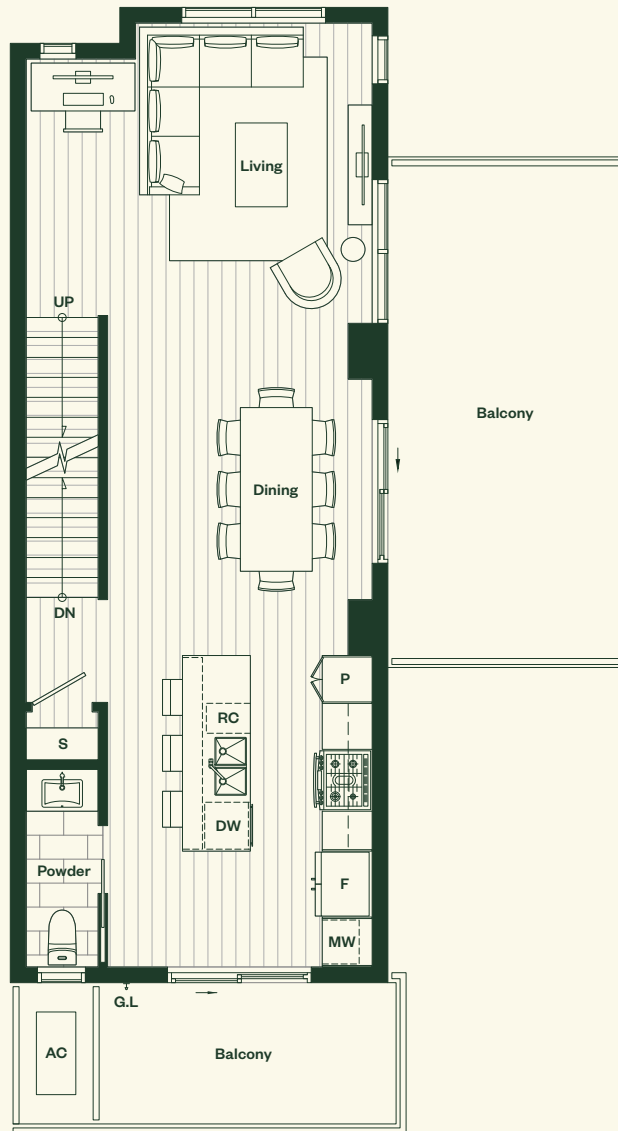


The Developer reserves the right in its sole discretion to make modifications or changes to building design, floor plans, project designs, specifications, finishes, features, and dimensions, without prior notice. Square footages are approximate and have been calculated from architectural drawings. Actual final dimensions following completion of construction may vary from those set out herein. E.&O.E. Marcon Johnston (GP) Ltd.

# Lower Level

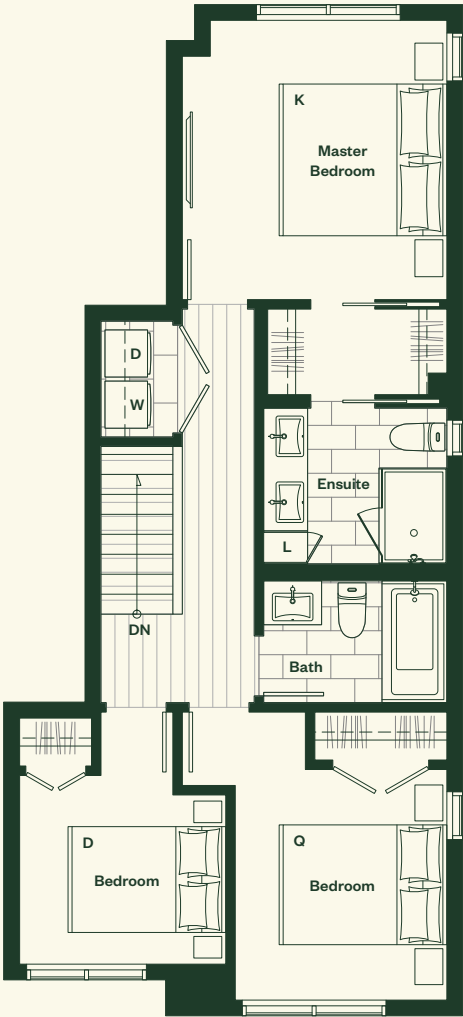


# Main Level





# Upper Level



# Will



## Plan L1

4 Bedroom & Lock Off Suite,  
3 Bathroom, Powder Room.

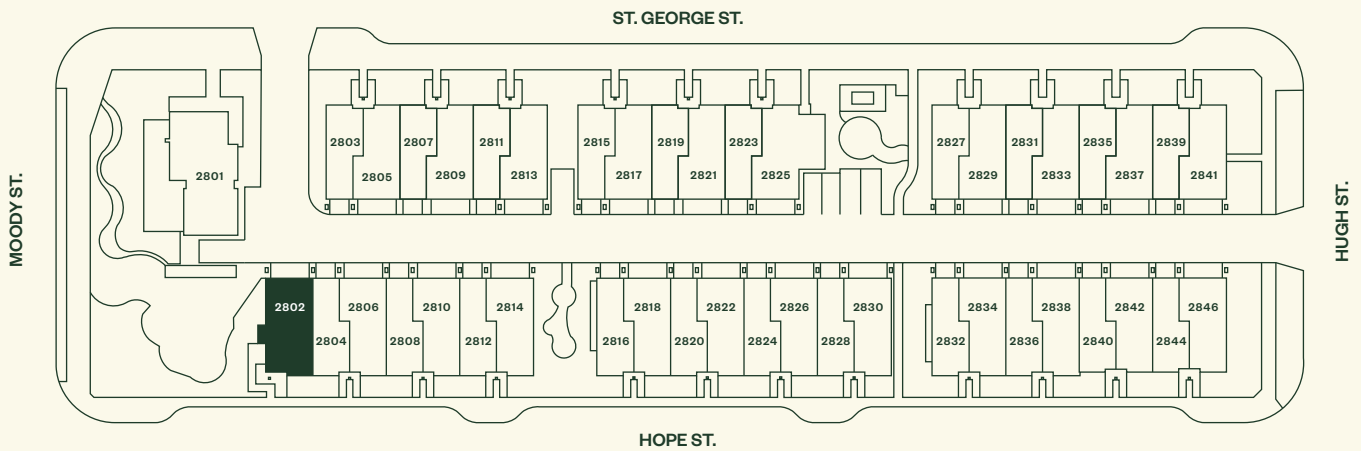


Port Moody

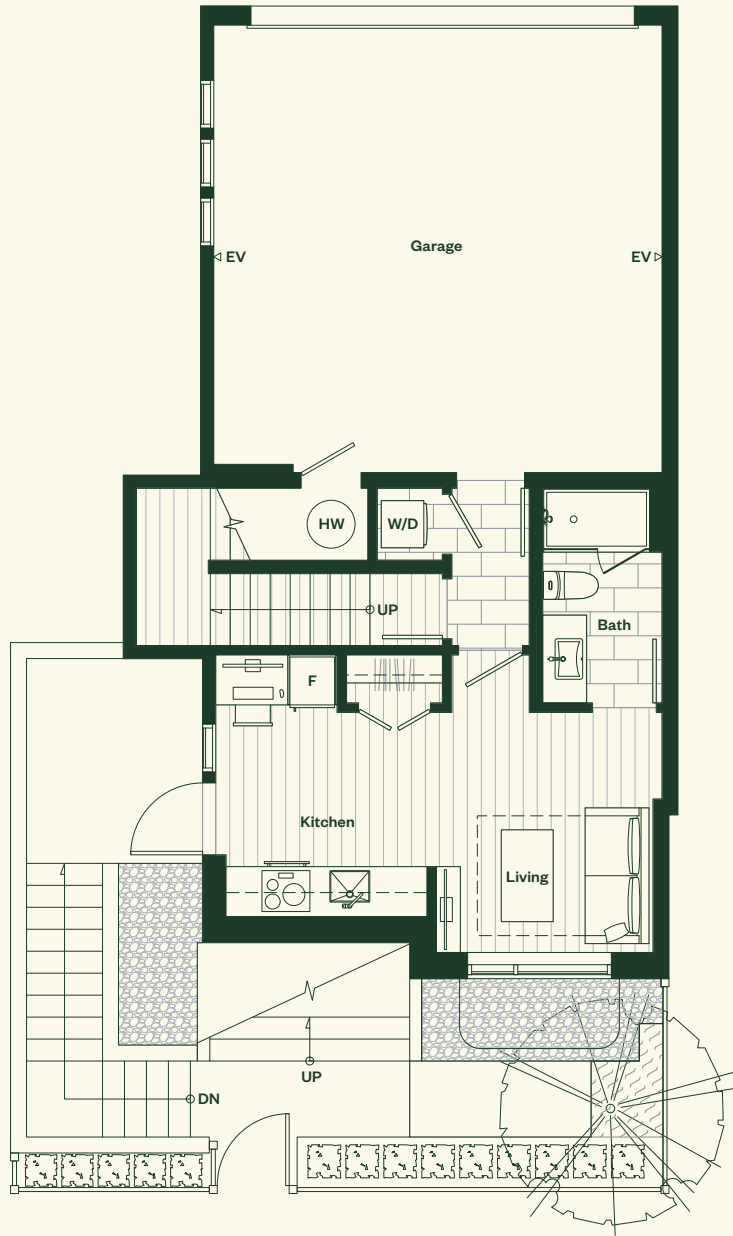
# Plan L1

4 Bedroom & Lock Off Suite  
3 Bathroom  
Powder Room

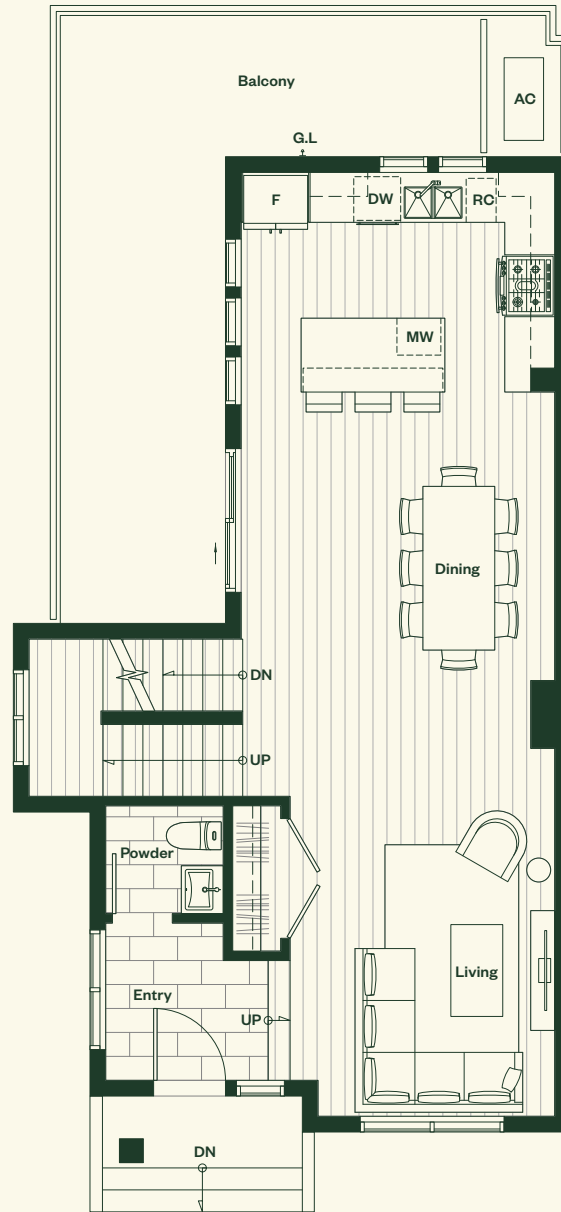
Total Living: 1,997 sf  
Interior: 1,765 sf  
Exterior: 232 sf



# Lower Level



# Main Level



# Upper Level

