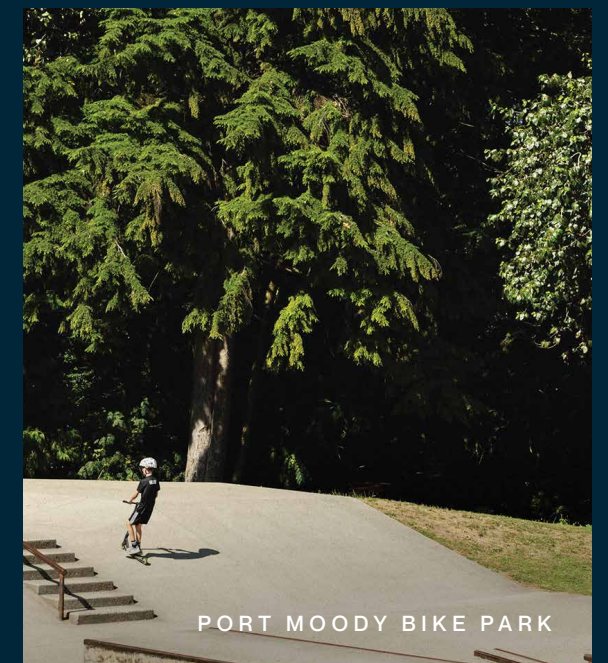


INLET DISTRICT

ADVANCED PREVIEW KIT

Community Anchored in Connection



Masterplan Experts

At Wesgroup, we see potential. Envisioned over 50-year horizons, our masterplan communities transform neighbourhoods. Some are so expansive they rival cities: walkable, sustainable Districts with all the services and amenities to support them. For over 60 years, we've built a vertically integrated company that handles construction, development, sales, and marketing—making us efficient, cost-effective, and fully invested from start to finish. It takes a trained eye and a deft hand to bring a vision to life. Our entire team is committed to transforming the little things into big things—and we do it with a foundation of care, consideration and dignity.

Our track record—River District, Brewery District, and more—is proof of that. But community building is more than a science—it's an art. With well-thought-out living spaces within a short walk of all daily needs, parks, and gathering places—we make room to grow, connect, and play. More than a place to live, it's a way of living. When you choose Wesgroup, it's with the knowledge and security that we invest in our communities for—and over—the long term.

After all, we live here too.

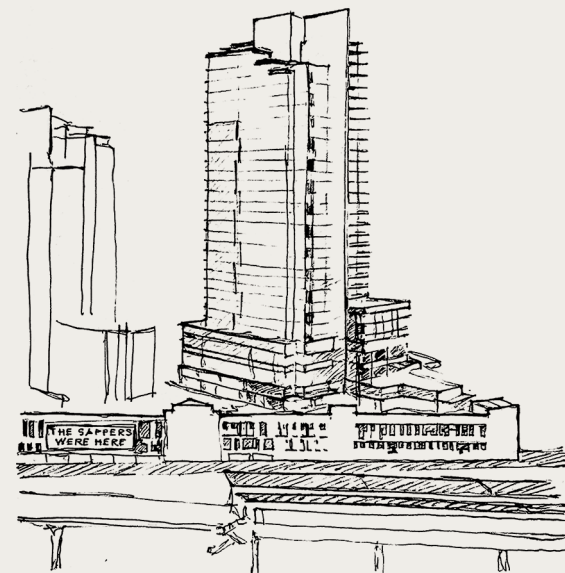


RIVER DISTRICT

CONSTRUCTION START: 2015

ESTIMATED DISTRICT COMPLETION: 2040

- 7,000+ homes
- 250,000+ sf of retail space
- 25 acres of green space
- 2 schools
- 1 Community Centre
- River District Energy

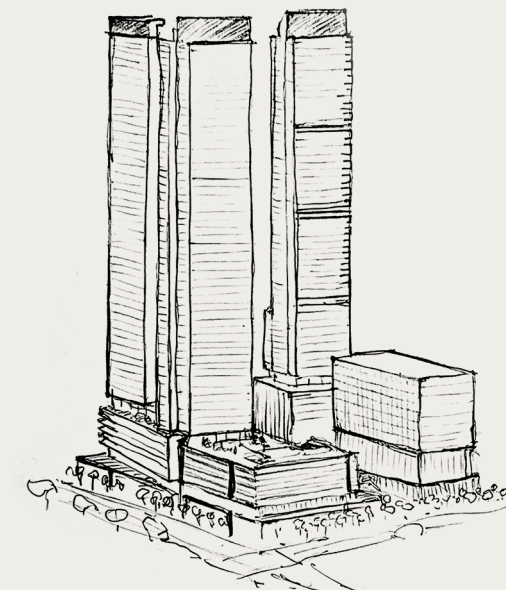


BREWERY DISTRICT

CONSTRUCTION START: 2010

ESTIMATED DISTRICT COMPLETION: 2027

- 1,000+ homes
- 87,000+ sf of retail space
- 420,000+ sf of office space
- 250 metres from SkyTrain

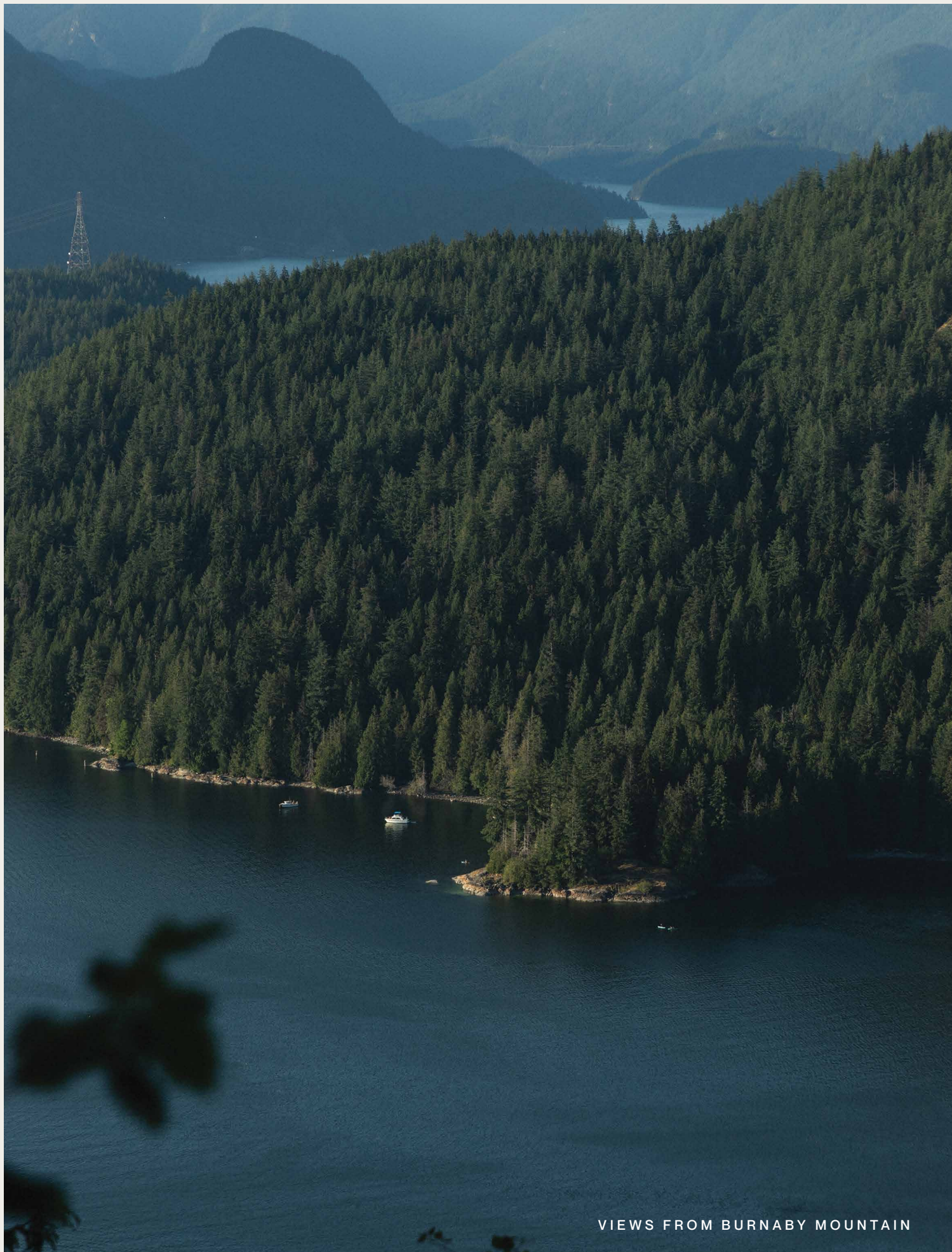


CIVIC DISTRICT

CONSTRUCTION START: 2026

ESTIMATED DISTRICT COMPLETION: 2035

- 2,100+ homes
- 250,000 sf of office space
- 80,000 sf of retail space
- 100,000 sf of hotel space
- 20,000 sf of daycare space
- 250 metres from SkyTrain



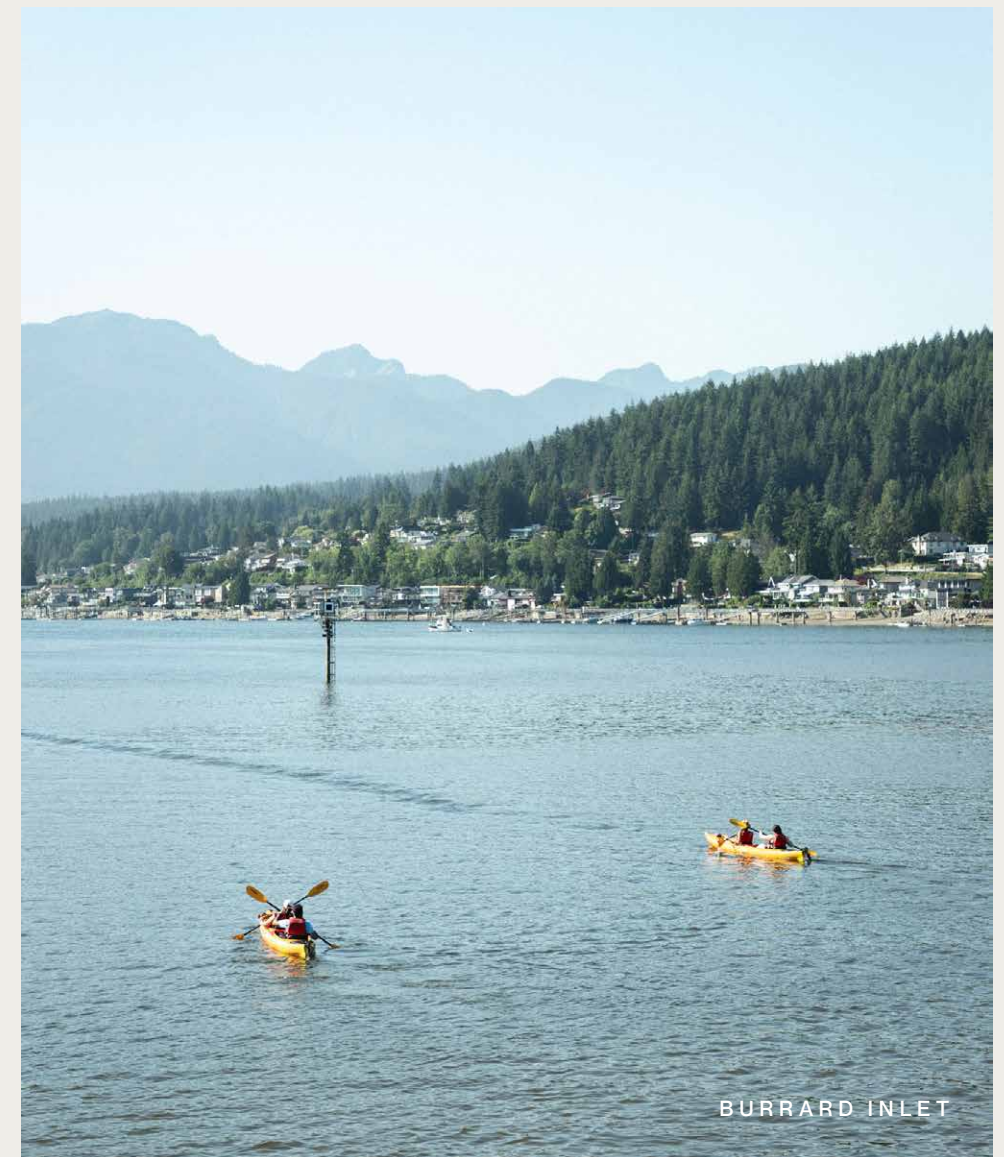
VIEWS FROM BURNABY MOUNTAIN

**Inspired by
the Inlet.
Connected
by the Land.
Made for**



POMO MUSEUM

Tucked away in Burrard Inlet, Port Moody blends its rich waterfront history with a genuine love for local artisans and artists, creating a vibrant, growing community that's perfectly balanced with the peaceful beauty of nature.



BURRARD INLET

A Cultural Hub, Surrounded by Nature

A lively community where people connect, stories unfold, and the West Coast lifestyle thrives.



ROCKY POINT PARK

Welcome To Inlet District

In the beautiful city of Port Moody, Inlet District blends seamlessly into the surrounding neighbourhood, offering a community that feels like its own. With homes and amenities designed with your well-being in mind, and a lively central park energized by shops and services, it's a place where people naturally come together.



Community

Inlet District is the complete package. Practical homes, curated amenities, modern offices, childcare—it's all here. Each phase, building and detail is designed to enhance the lives of those who call this place home. Each neighbourhood has its own unique vibe, bringing variety and diversity that Port Moody locals and residents will love.

OVER 4 ACRES OF PARKS & PUBLIC SPACES

Connection

Connecting with your city, community, and close friends is as easy as stepping downstairs. Whether you're on foot, bike, transit, or driving, you'll find direct connections to the SkyTrain Station, West Coast Express, bike paths, and roadways right at your doorstep.

5 MINUTE WALK FROM INLET CENTRE STATION

Amenities

From a vibrant retail hub to the serene central park, each space balances your everyday life. At its core, you'll find The Well: a residents-only amenity space buzzing with sports courts, a synthetic ice rink, cultural events and fitness programs—all capturing the true West Coast spirit.

OVER 27,000 SF CENTRAL AMENITY BUILDING

Future

At Wesgroup, we build communities where sustainability, affordability and innovative design converge, ensuring that today is as vibrant as tomorrow, with a long-term mindset that will leave a positive impact for decades to come.

RECYCLING OVER 75% OF ALL CONSTRUCTION WASTE

Location

This locally-loved community, just a short stroll from the shoreline, breweries, boutique shops and nature trails, is the perfect setting for Inlet District. As Port Moody evolves from a quaint town to a vibrant city, it maintains its deep-rooted culture and rich history.

CITY OF ARTS & CULTURE



THE PARKSIDE BREWERY



SKYTRAIN



ROCKY POINT ICE CREAM

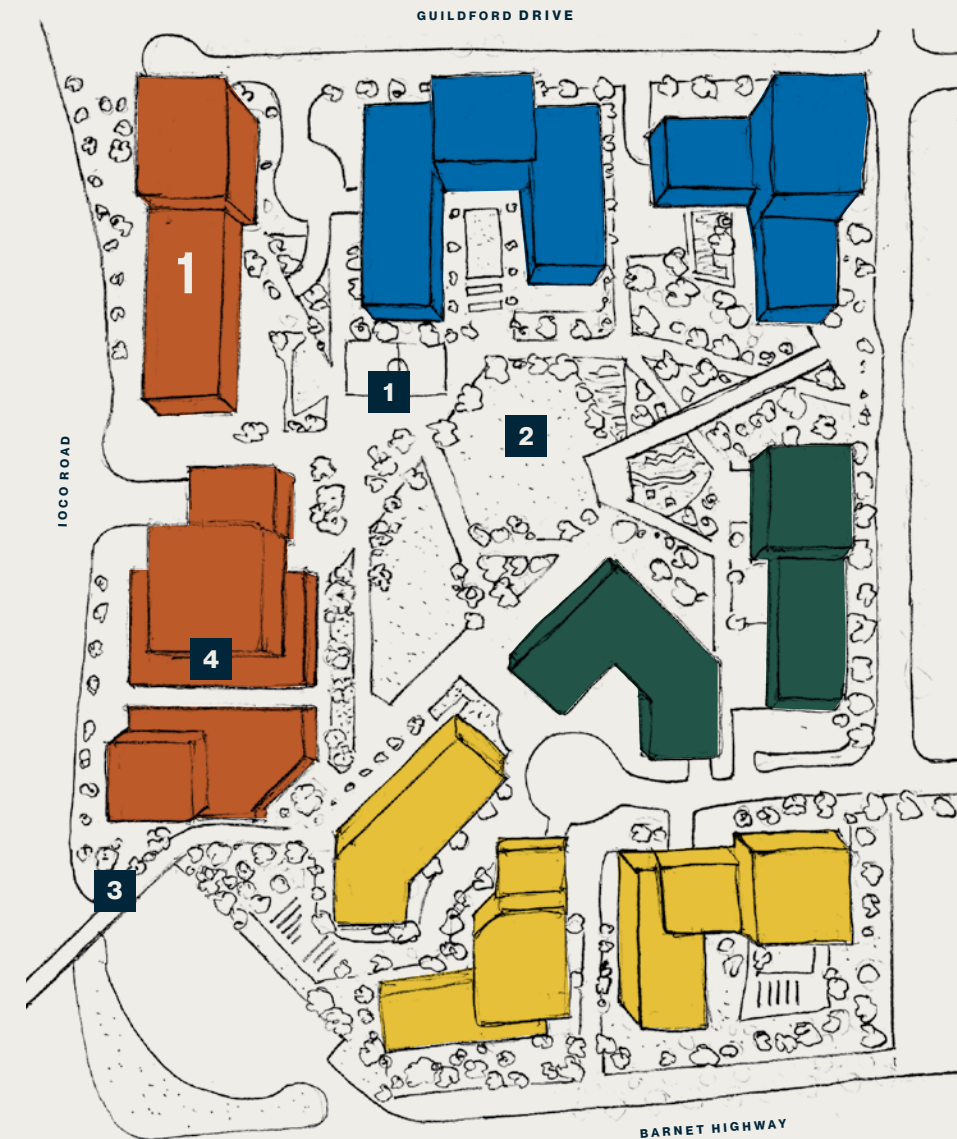


BIRDS-EYE VIEW OF INLET DISTRICT

At Inlet District, you're not just moving into a new place—you're becoming part of a community that makes everyday life better. Picture yourself strolling along a pedestrian walkway that leads directly to transit or exploring the latest spots sharing Port Moody's future. It's more than just buildings; it's about creating connections, celebrating diversity, and enjoying a walkable district where everything feels close to home.

1 MARKET SQUARE

The first neighbourhood of Inlet District, filled with variety, from grocers and boutique shops to quaint cafes and locally-loved restaurants.



4 DISTINCT NEIGHBOURHOODS

OVER 27,000 SF OF CENTRAL AMENITIES

9,500 SF OF DAYCARE SPACE

OVER 2,500 NEW HOMES

115,000 SF OF RETAIL & OFFICE SPACE

OVER 4 ACRES OF NEW PARKS & PUBLIC SPACES

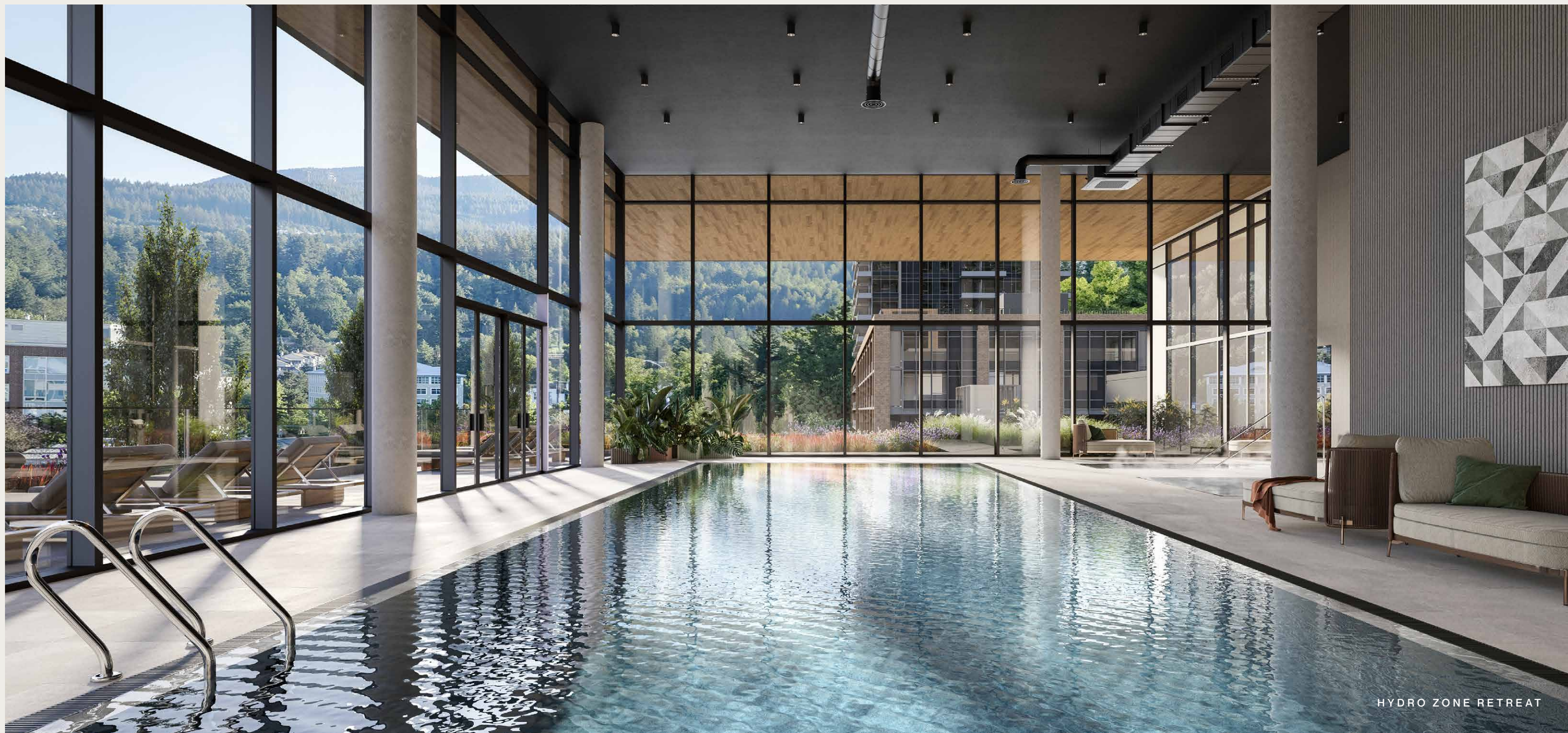
 MARKET SQUARE	 MIDTOWN FUTURE PHASE	 CENTRAL GREEN FUTURE PHASE	 HIGHLAND GROVE FUTURE PHASE
---	---	---	--

1 CENTRAL PLAZA
A hub for connection

3 SKYBRIDGE
Direct access to Inlet Centre Station

2 CENTRAL PARK
Naturally designed for gathering

4 THE WELL
Central amenities focused on wellness



HYDRO ZONE RETREAT

The Well: A Place to Recharge and Connect

Over 27,000 square feet of central amenities made exclusively for residents of Inlet District.

Two Levels of Well-Being



LEVEL 2

- 1** Hydro Zone
- 2** Health Club & Yoga Studio
- 3** Sports Courts
- 4** Parent & Kids' Lounges
- 5** Synthetic Ice Rink



LEVEL 2.5

- 1** Games Lounge
- 2** Cinema
- 3** Co-Working Lounge



These spaces allow for quality time with friends and family, unwinding after a long day, or focusing on personal goals. From the sports courts to the swimming pool, every amenity invites you to enjoy a richer, healthier life—all without leaving your community.



The Well brings together spaces that celebrate the West Coast lifestyle. For those who love staying active, this hub includes sports courts, a synthetic ice rink, a hydro zone, and a health club for private training and solo workouts.

When it's time to unwind, The Well offers a hot tub, cold plunge, sauna and steam room, a cozy cinema with a snack bar, a games lounge, a music bar and a gathering lounge. There's also multiple co-working spaces and a kids' lounge ensuring there's something for everyone.





CENTRAL GATHERING PLAZA

Spirit Starts in the Square

If you thrive on variety, Market Square is the perfect spot for you. Tucked away in the northwest corner of Inlet District, the welcoming neighbourhood buzzes with life and invites you to explore its outdoor public spaces. Whether you're a local or just passing through, you'll find hidden gems and a vibrant spirit that enhances Port Moody's charm.



VIEW OF 1 MARKET SQUARE FROM THE CENTRAL PARK

**Thoughtfully
designed homes and
inviting gathering
spaces create a
community where
life naturally
comes together.**

1 MARKET SQUARE

Designed For Life

1 Market Square introduces a variety of studio to 3-bedroom homes to the urban core of Inlet District, where residences, shops and public spaces blend seamlessly for a well-rounded living experience. Thoughtfully designed by Wesgroup from the inside out, these homes balance style with practicality, offering livable spaces you'll be proud to call home—today and for years to come.



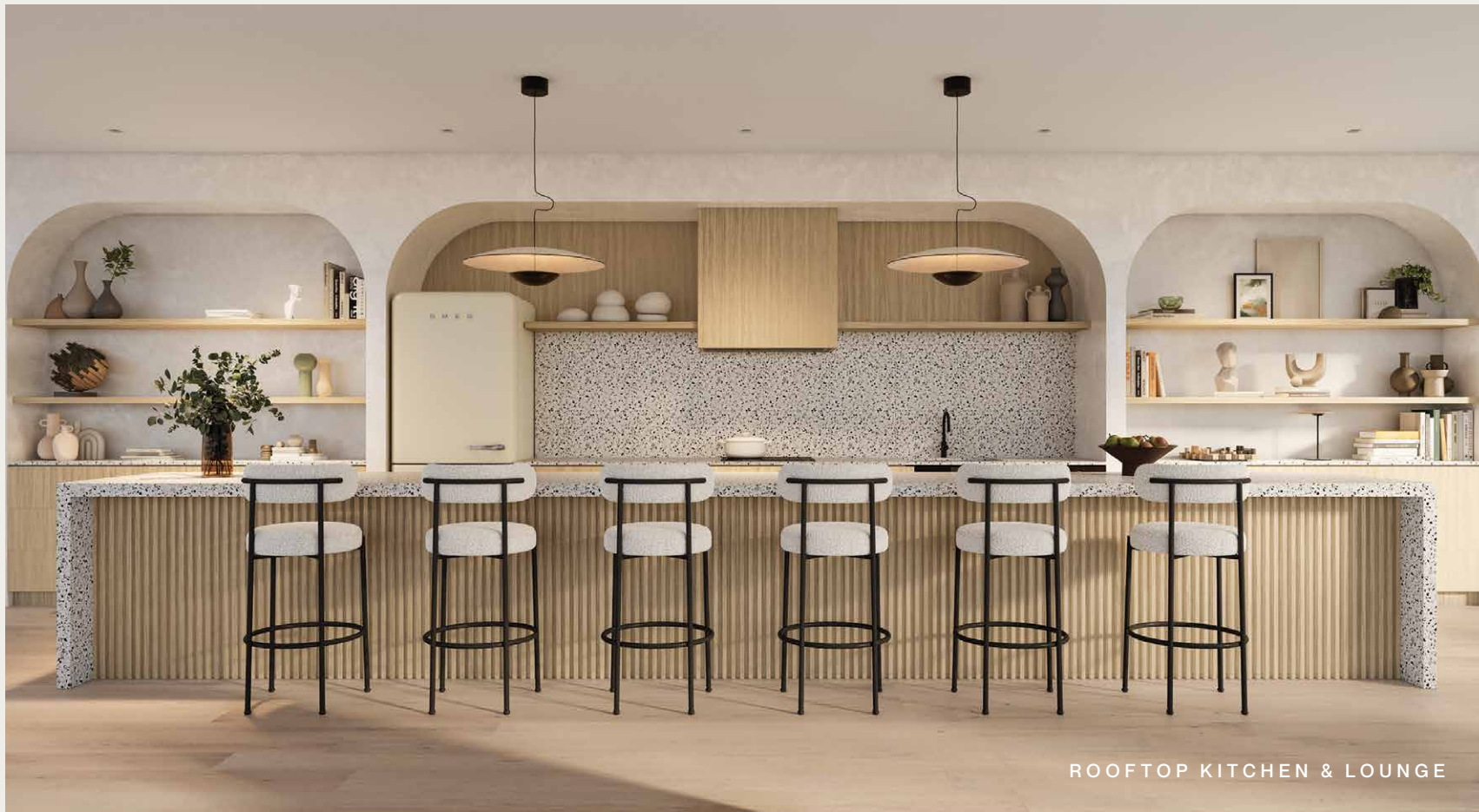
Crafted for both practicality and style. Imagine energy efficient heating and cooling, keeping you comfortable year-round, while easy-to-clean floors and countertops make daily life effortless. Blackout blinds and soft-close cabinets

add a touch of convenience. Stylish touches enhance the overall ambiance: sleek matte black finishes and polished chrome accents complement the stunning white quartz countertops and wide-plank flooring.



Step inside 1 Market Square, where smart design meets effortless comfort, framed by the beauty of the mountains.





Private Amenities at 1 Market Square

In addition to the perks of The Well, residents of 1 Market Square have exclusive access to a variety of curated spaces within their own building.

LEVEL 3

A bike room with a workshop and street-level access, a cozy lobby with seating, two guest suites (L3 & L4), and a dedicated mail and parcel room.

LEVEL 7

An off-leash dog area, outdoor amenity space, games room, media lounge, and snack bar—perfect for casual gatherings.

LEVEL 27

Spacious indoor lounge with a chef's kitchen and large island, plus two outdoor cooking areas, all offering stunning views of the inlet and mountains.

