

# STUNNING GROUND LEVEL 2 BED + DEN

UNIT 102 - 15270 17 AVENUE, SOUTH SURREY WHITE ROCK



Welcome to the ultimate adult lifestyle at the Cambridge! This stunning, ground level, bright 2 bed + full-sized den boasts one of the largest units in the complex and has been fully updated to perfection. You'll love the maple hardwood flooring, custom window coverings, crown molding, cozy gas fireplace, large formal dining area, and amazing kitchen complete with updated cabinetry, quartz counters, and stainless steel appliances. The king-sized primary bedroom features a generous ensuite with a double vanity, glass shower, and soaker tub, while the second bedroom has a built-in Murphy bed for extra convenience. Step outside to the massive covered patio, perfect for entertaining guests. This lovingly maintained building offers a social room, library, and workshop for all your hobbies, plus two parking stalls and a locker. And with its prime location just steps away from Semiahmoo Mall, Starbucks, and all amenities, you'll enjoy the ultimate in convenience. Don't miss your chance to live in style!





FOR MORE INFORMATION ABOUT THIS PROPERTY VISIT

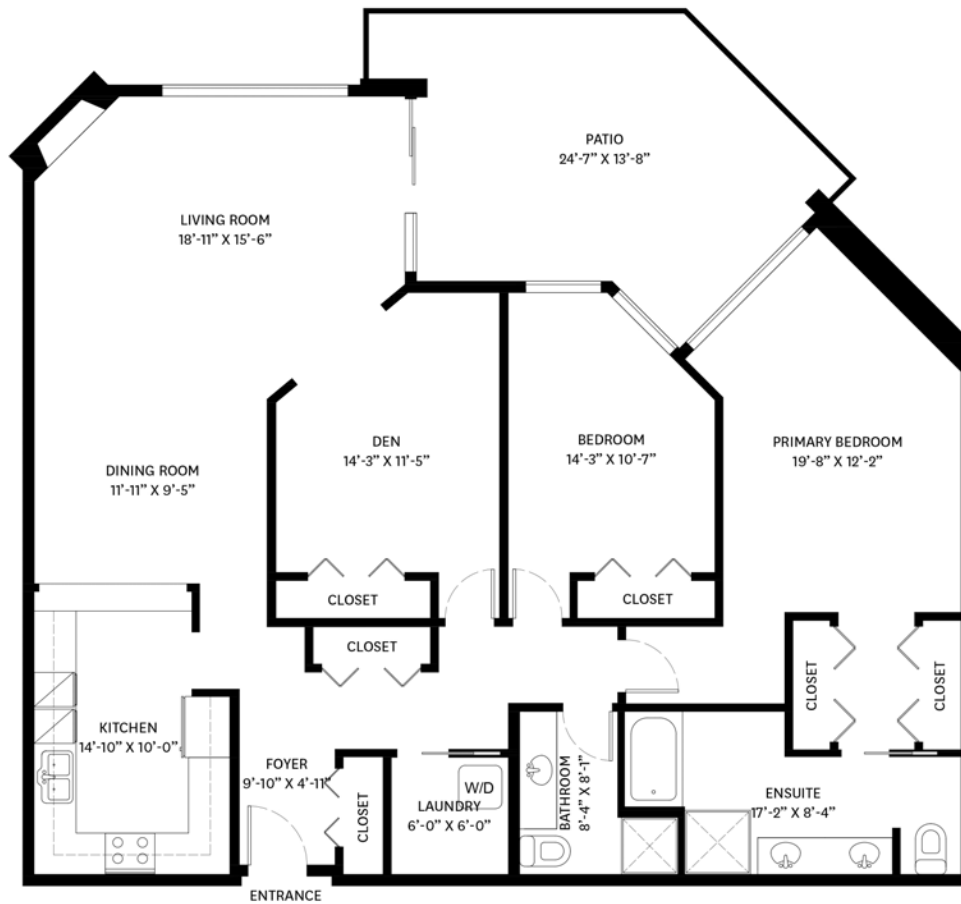
[www.reimers.ca](http://www.reimers.ca)

ALL INFORMATION WHILE DEEMED TO BE CORRECT IS NOT GUARANTEED

# FLOORPLAN

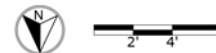
UNIT 102 - 15270 17 AVENUE, SOUTH SURREY WHITE ROCK

**MAIN FLOOR TOTAL: 1,657 SQ.FT.**  
**PATIO: 272 SQ. FT.**



**MAIN FLOOR PLAN**  
Ceiling Height: 7'-10"

ALL MEASUREMENTS ARE APPROXIMATE AND SHOULD BE VERIFIED IF IMPORTANT



**ROYAL LEPAGE**  
WEST REAL ESTATE SERVICES



**davidreimers**  
PERSONAL REAL ESTATE CORPORATION

**604.340.4400**  
LOCAL REAL ESTATE ADVISOR

604.340.4400 info@reimers.ca www.reimers.ca

我们也说国语和粤语。 买卖房屋？ 请致电1.888.515.8881



PASSIONATE AND INFORMED REAL ESTATE SERVICE YOU CAN **DEPEND** ON!



HOW MUCH IS YOUR HOME WORTH? VISIT...

[homeevaluate.com](http://homeevaluate.com)